

# Product Datasheet

## alpha-Synuclein Antibody (3C11)

### NBP3-18258

Unit Size: 100 ug

Store at -20C. Avoid freeze-thaw cycles.

[www.novusbio.com](http://www.novusbio.com)



[technical@novusbio.com](mailto:technical@novusbio.com)

Protocols, Publications, Related Products, Reviews, Research Tools and Images at:  
[www.novusbio.com/NBP3-18258](http://www.novusbio.com/NBP3-18258)

Updated 8/1/2022 v.20.1

Earn rewards for product  
reviews and publications.

Submit a publication at [www.novusbio.com/publications](http://www.novusbio.com/publications)

Submit a review at [www.novusbio.com/reviews/destination/NBP3-18258](http://www.novusbio.com/reviews/destination/NBP3-18258)



**NBP3-18258**

alpha-Synuclein Antibody (3C11)

Product Information	
Unit Size	100 ug
Concentration	1 mg/ml
Storage	Store at -20C. Avoid freeze-thaw cycles.
Clonality	Monoclonal
Clone	3C11
Preservative	0.09% Sodium Azide
Isotype	IgG1
Purity	Protein G purified
Buffer	PBS pH 7.4, 50% glycerol

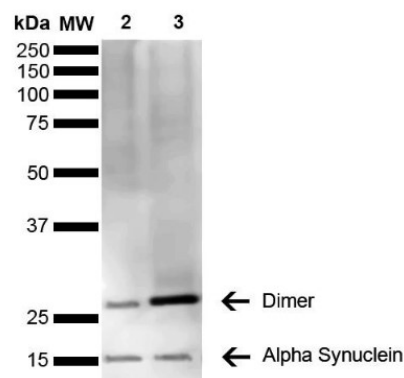
Product Description	
Host	Mouse
Gene ID	6622
Gene Symbol	SNCA
Species	Human, Mouse, Rat
Specificity/Sensitivity	Binds within the 81-130 aa region of human ASYN, determined using WB and ELISA with corresponding peptides. Detects ~14 kDa band corresponding to ASYN. Band at ~30 kDa is a dimer.
Immunogen	Human alpha-Synuclein monomer

Product Application Details	
Applications	Western Blot, Dot Blot, ELISA, Immunocytochemistry/Immunofluorescence, Immunohistochemistry
Recommended Dilutions	Western Blot 1:1000, ELISA 1:1000, Immunohistochemistry, Immunocytochemistry/Immunofluorescence 1:100, Dot Blot 1:1000
Application Notes	Optimal dilutions for assays should be determined by the user.

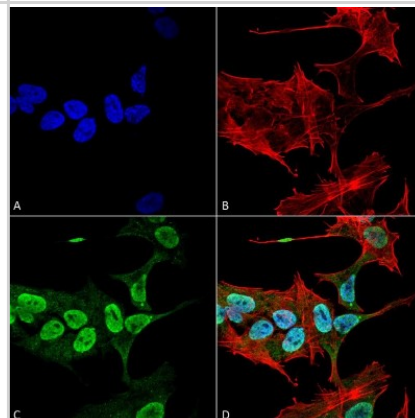


## Images

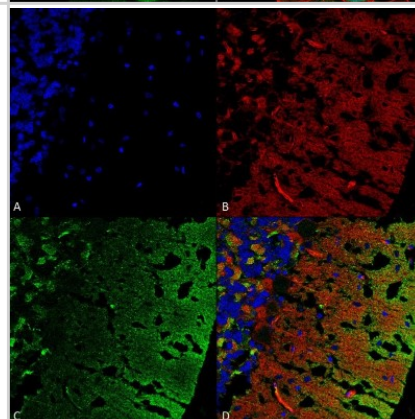
**Western Blot: alpha-Synuclein Antibody (3C11) [NBP3-18258]** - Western Blot analysis of Human Brain showing detection of 14 kDa alpha-Synuclein protein using Mouse Anti-alpha-Synuclein Monoclonal Antibody, Clone 3C11 (NBP3-18258). Lane 1: Molecular Weight Ladder (MW). Lane 2: Parkinson brain cell lysate. Lane 3: Human brain cell lysate. Load: 15 ug. Block: 5% Skim Milk in 1X TBST. Primary Antibody: Mouse Anti-alpha-Synuclein Monoclonal Antibody (NBP3-18258) at 1:1000 for 2 hours at RT. Secondary Antibody: Goat Anti-Mouse HRP:IgG at 1:3000 for 1 hour at RT. Color Development: ECL solution (Super Signal West Pico) for 5 min in RT. Predicted/Observed Size: 14 kDa. Other Band(s): 100 kDa (oligomer).



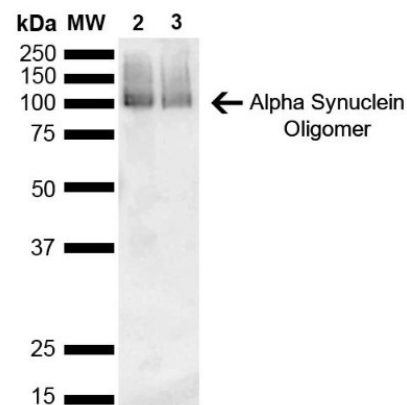
**Immunocytochemistry/Immunofluorescence: alpha-Synuclein Antibody (3C11) [NBP3-18258]** - Immunocytochemistry/Immunofluorescence analysis using Mouse Anti-alpha-Synuclein Monoclonal Antibody, Clone 3C11 (NBP3-18258). Tissue: Neuroblastoma cell line (SK-N-BE). Species: Human. Fixation: 4% Formaldehyde for 15 min at RT. Primary Antibody: Mouse Anti-alpha-Synuclein Monoclonal Antibody (NBP3-18258) at 1:100 for 60 min at RT. Secondary Antibody: Goat Anti-Mouse ATTO 488 at 1:200 for 60 min at RT. Counterstain: Phalloidin Texas Red F-Actin stain; DAPI (blue) nuclear stain at 1:1000, 1:5000 for 60 min at RT, 5 min at RT. Localization: Cytoplasm: weak; Nucleus: Med. Magnification: 60X. (A) DAPI (blue) nuclear stain. (B) Phalloidin Texas Red F-Actin stain. (C) alpha-Synuclein Antibody. (D) Composite.



**Immunohistochemistry: alpha-Synuclein Antibody (3C11) [NBP3-18258]** - Immunohistochemistry analysis using Mouse Anti-alpha-Synuclein Monoclonal Antibody, Clone 3C11 (NBP3-18258). Tissue: cerebellum. Species: Rat. Fixation: Formalin fixed, paraffin embedded. Primary Antibody: Mouse Anti-alpha-Synuclein Monoclonal Antibody (NBP3-18258) at 1:25 for 1 hour at RT. Secondary Antibody: Goat Anti-Mouse IgG: Alexa Fluor 488. Counterstain: Actin-binding Phalloidin-Alexa Fluor 633; DAPI (blue) nuclear stain. Magnification: 63X. (A) DAPI (blue) nuclear stain. (B) Phalloidin Alex Fluor 633 F-Actin stain. (C) alpha-Synuclein Antibody (D) Composite.



**Western Blot: alpha-Synuclein Antibody (3C11) [NBP3-18258]** - Western Blot analysis of Mouse, Rat Brain showing detection of 14 kDa alpha-Synuclein protein using Mouse Anti-alpha-Synuclein Monoclonal Antibody, Clone 3C11 (NBP3-18258). Lane 1: Molecular Weight Ladder (MW). Lane 2: Mouse brain cell lysate. Lane 3: Rat brain cell lysate. Load: 15 ug. Block: 5% Skim Milk in 1X TBST. Primary Antibody: Mouse Anti-alpha-Synuclein Monoclonal Antibody (NBP3-18258) at 1:1000 for 2 hours at RT. Secondary Antibody: Goat Anti-Mouse HRP:IgG at 1:3000 for 1 hour at RT. Color Development: ECL solution (Super Signal West Pico) for 5 min in RT. Predicted/Observed Size: 14 kDa. Other Band(s): ~30 kDa (dimer).





### **Novus Biologicals USA**

10730 E. Briarwood Avenue  
Centennial, CO 80112  
USA

Phone: 303.730.1950  
Toll Free: 1.888.506.6887  
Fax: 303.730.1966  
novus@novusbio.com

### **Bio-Techne Canada**

21 Canmotor Ave  
Toronto, ON M8Z 4E6  
Canada

Phone: 905.827.6400  
Toll Free: 855.668.8722  
Fax: 905.827.6402  
canada.inquires@bio-techne.com

### **Bio-Techne Ltd**

19 Barton Lane  
Abingdon Science Park  
Abingdon, OX14 3NB, United Kingdom

Phone: (44) (0) 1235 529449  
Free Phone: 0800 37 34 15  
Fax: (44) (0) 1235 533420  
info.EMEA@bio-techne.com

### **General Contact Information**

www.novusbio.com  
Technical Support: technical@novusbio.com  
Orders: orders@novusbio.com  
General: novus@novusbio.com

### **Products Related to NBP3-18258**

---

HAF007	Goat anti-Mouse IgG Secondary Antibody [HRP (Horseradish Peroxidase)]
NB720-B	Rabbit anti-Mouse IgG (H+L) Secondary Antibody [Biotin]
NBP1-97005-0.5mg	Mouse IgG1 Isotype Control (MG1)
NBP2-54789-100ug	Recombinant Human alpha-Synuclein Active, Pre-formed Fibrils, (Type 1) Protein

---

### **Limitations**

This product is for research use only and is not approved for use in humans or in clinical diagnosis. Primary Antibodies are guaranteed for 1 year from date of receipt.

For more information on our 100% guarantee, please visit [www.novusbio.com/guarantee](http://www.novusbio.com/guarantee)

Earn gift cards/discounts by submitting a review: [www.novusbio.com/reviews/submit/NBP3-18258](http://www.novusbio.com/reviews/submit/NBP3-18258)

Earn gift cards/discounts by submitting a publication using this product:  
[www.novusbio.com/publications](http://www.novusbio.com/publications)



