

Product Datasheet

epithelial Sodium Channel beta Antibody - BSA Free NBP3-18257

Unit Size: 100 ug

Store at -20C. Avoid freeze-thaw cycles.

www.novusbio.com



technical@novusbio.com

Protocols, Publications, Related Products, Reviews, Research Tools and Images at:
www.novusbio.com/NBP3-18257

Updated 9/9/2025 v.20.1

Earn rewards for product
reviews and publications.

Submit a publication at www.novusbio.com/publications

Submit a review at www.novusbio.com/reviews/destination/NBP3-18257



NBP3-18257

epithelial Sodium Channel beta Antibody - BSA Free

Product Information	
Unit Size	100 ug
Concentration	1 mg/ml
Storage	Store at -20C. Avoid freeze-thaw cycles.
Clonality	Polyclonal
Preservative	0.09% Sodium Azide
Isotype	IgG
Purity	Protein A purified
Buffer	PBS, 50% glycerol

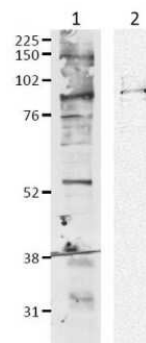
Product Description	
Description	Novus Biologicals Rabbit epithelial Sodium Channel beta Antibody - BSA Free (NBP3-18257) is a polyclonal antibody validated for use in IHC, WB, ICC/IF and IP. All Novus Biologicals antibodies are covered by our 100% guarantee.
Host	Rabbit
Gene ID	6338
Gene Symbol	SCNN1B
Species	Human, Mouse, Rat, Hamster, Xenopus
Immunogen	Produced against the C-terminal tail (amino acids 617-638) of rat beta ENaC (antibody designation 3755-2)

Product Application Details	
Applications	Western Blot, Immunocytochemistry/ Immunofluorescence, Immunohistochemistry, Immunoprecipitation
Recommended Dilutions	Western Blot 1:1000, Immunohistochemistry 1:100, Immunocytochemistry/ Immunofluorescence, Immunoprecipitation
Application Notes	Optimal dilutions for assays should be determined by the user.



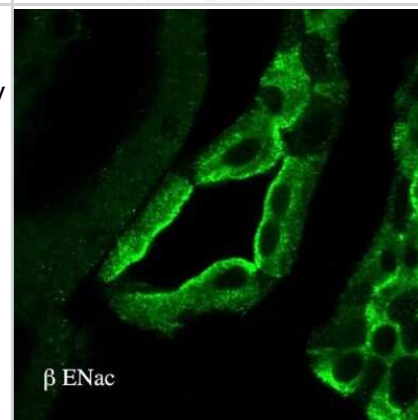
Images

Western Blot: epithelial Sodium Channel beta Antibody [NBP3-18257] - Western blot analysis of Mouse mpkCCD cell lysates showing detection of epithelial Sodium Channel beta protein using Rabbit Anti-epithelial Sodium Channel beta Polyclonal Antibody (NBP3-18257). Primary Antibody: Rabbit Anti-epithelial Sodium Channel beta Polyclonal Antibody (NBP3-18257) at 1:1000.

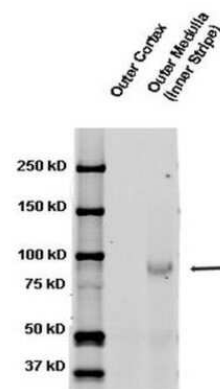


1- mpkCCD cell lysate (mouse)
2- FRT expressing tagged β -mENaC

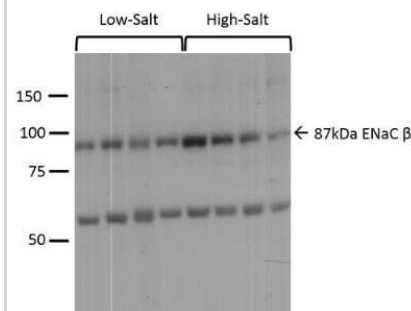
Immunohistochemistry: epithelial Sodium Channel beta Antibody [NBP3-18257] - Immunohistochemistry analysis using Rabbit Anti-epithelial Sodium Channel beta Polyclonal Antibody (NBP3-18257). Tissue: kidney tissue. Species: Rat. Primary Antibody: Rabbit Anti-epithelial Sodium Channel beta Polyclonal Antibody (NBP3-18257) at 1:100. Secondary Antibody: FITC Goat Anti-Rabbit (green).



Western Blot: epithelial Sodium Channel beta Antibody [NBP3-18257] - Western blot analysis of Rat kidney tissue lysates showing detection of epithelial Sodium Channel beta protein using Rabbit Anti-epithelial Sodium Channel beta Polyclonal Antibody (NBP3-18257). Primary Antibody: Rabbit Anti-epithelial Sodium Channel beta Polyclonal Antibody (NBP3-18257) at 1:1000.



Western Blot: epithelial Sodium Channel beta Antibody [NBP3-18257] - Western blot analysis of Mouse kidney cortex showing detection of epithelial Sodium Channel beta protein using Rabbit Anti-epithelial Sodium Channel beta Polyclonal Antibody (NBP3-18257). Primary Antibody: Rabbit Anti-epithelial Sodium Channel beta Polyclonal Antibody (NBP3-18257) at 1:1000. Low-salt diet (lanes 1-4) compared to a high-salt diet (lanes 5-8).





Novus Biologicals USA

10730 E. Briarwood Avenue
Centennial, CO 80112
USA
Phone: 303.730.1950
Toll Free: 1.888.506.6887
Fax: 303.730.1966
nb-customerservice@bio-techne.com

Bio-Techne Canada

21 Canmotor Ave
Toronto, ON M8Z 4E6
Canada
Phone: 905.827.6400
Toll Free: 855.668.8722
Fax: 905.827.6402
canada.inquires@bio-techne.com

Bio-Techne Ltd

19 Barton Lane
Abingdon Science Park
Abingdon, OX14 3NB, United Kingdom
Phone: (44) (0) 1235 529449
Free Phone: 0800 37 34 15
Fax: (44) (0) 1235 533420
info.EMEA@bio-techne.com

General Contact Information

www.novusbio.com
Technical Support: nb-technical@bio-techne.com
Orders: nb-customerservice@bio-techne.com
General: novus@novusbio.com

Products Related to NBP3-18257

NBP2-33376H	Blue Marker Antibody (6F4-F6) [HRP]
HAF008	Goat anti-Rabbit IgG Secondary Antibody [HRP]
NB7160	Goat anti-Rabbit IgG (H+L) Secondary Antibody [HRP]
NBP2-24891	Rabbit IgG Isotype Control

Limitations

This product is for research use only and is not approved for use in humans or in clinical diagnosis. Primary Antibodies are guaranteed for 1 year from date of receipt.

For more information on our 100% guarantee, please visit www.novusbio.com/guarantee

Earn gift cards/discounts by submitting a review: www.novusbio.com/reviews/submit/NBP3-18257

Earn gift cards/discounts by submitting a publication using this product:
www.novusbio.com/publications

