

# Product Datasheet

## FUNDC1 Antibody NBP3-18250

Unit Size: 100 ug

Store at -20C. Avoid freeze-thaw cycles.

[www.novusbio.com](http://www.novusbio.com)



[technical@novusbio.com](mailto:technical@novusbio.com)

Protocols, Publications, Related Products, Reviews, Research Tools and Images at:  
[www.novusbio.com/NBP3-18250](http://www.novusbio.com/NBP3-18250)

Updated 7/5/2023 v.20.1

Earn rewards for product  
reviews and publications.

Submit a publication at [www.novusbio.com/publications](http://www.novusbio.com/publications)

Submit a review at [www.novusbio.com/reviews/destination/NBP3-18250](http://www.novusbio.com/reviews/destination/NBP3-18250)



**NBP3-18250****FUNDC1 Antibody****Product Information**

<b>Unit Size</b>	100 ug
<b>Concentration</b>	1 mg/ml
<b>Storage</b>	Store at -20C. Avoid freeze-thaw cycles.
<b>Clonality</b>	Polyclonal
<b>Preservative</b>	0.09% Sodium Azide
<b>Isotype</b>	IgG
<b>Purity</b>	Peptide affinity purified
<b>Buffer</b>	PBS, 50% glycerol

**Product Description**

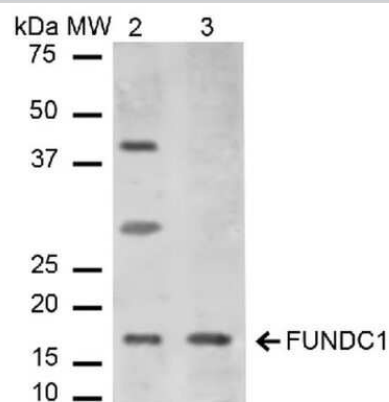
<b>Host</b>	Rabbit
<b>Gene ID</b>	139341
<b>Gene Symbol</b>	FUNDC1
<b>Species</b>	Human, Mouse, Rat
<b>Immunogen</b>	Synthetic peptide from the N-terminal of Human FUNDC1

**Product Application Details**

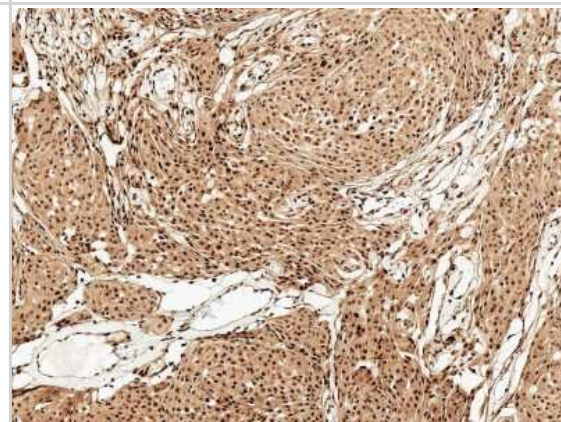
<b>Applications</b>	Western Blot, Immunohistochemistry
<b>Recommended Dilutions</b>	Western Blot 1:1000, Immunohistochemistry 1:50
<b>Application Notes</b>	Optimal dilutions for assays should be determined by the user.

**Images**

Western Blot: FUNDC1 Antibody [NBP3-18250] - Western blot analysis of Mouse, Rat Liver cell lysates showing detection of ~17.2 kDa FUNDC1 protein using Rabbit Anti-FUNDC1 Polyclonal Antibody (NBP3-18250). Lane 1: Molecular Weight Ladder (MW). Lane 2: Mouse Liver cell lysates. Lane 3: Rat Liver cell lysates. Load: 15 ug. Block: 5% Skim Milk in 1X TBST. Primary Antibody: Rabbit Anti-FUNDC1 Polyclonal Antibody (NBP3-18250) at 1:1000 for 2 hours at RT. Secondary Antibody: Goat Anti-Rabbit IgG: HRP at 1:2000 for 60 min at RT. Color Development: ECL solution for 6 min in RT. Predicted/Observed Size: ~17.2 kDa.



Immunohistochemistry: FUNDC1 Antibody [NBP3-18250] - Immunohistochemistry analysis using Rabbit Anti-FUNDC1 Polyclonal Antibody (NBP3-18250). Tissue: Brain. Species: Human. Fixation: Formalin Fixed Paraffin-Embedded. Primary Antibody: Rabbit Anti-FUNDC1 Polyclonal Antibody (NBP3-18250) at 1:50 for 30 min at RT. Counterstain: Hematoxylin. Magnification: 10X. HRP-DAB Detection.





### **Novus Biologicals USA**

10730 E. Briarwood Avenue  
Centennial, CO 80112  
USA  
Phone: 303.730.1950  
Toll Free: 1.888.506.6887  
Fax: 303.730.1966  
novus@novusbio.com

### **Bio-Techne Canada**

21 Canmotor Ave  
Toronto, ON M8Z 4E6  
Canada  
Phone: 905.827.6400  
Toll Free: 855.668.8722  
Fax: 905.827.6402  
canada.inquires@bio-technique.com

### **Bio-Techne Ltd**

19 Barton Lane  
Abingdon Science Park  
Abingdon, OX14 3NB, United Kingdom  
Phone: (44) (0) 1235 529449  
Free Phone: 0800 37 34 15  
Fax: (44) (0) 1235 533420  
info.EMEA@bio-technique.com

### **General Contact Information**

www.novusbio.com  
Technical Support: technical@novusbio.com  
Orders: orders@novusbio.com  
General: novus@novusbio.com

### **Products Related to NBP3-18250**

HAF008	Goat anti-Rabbit IgG Secondary Antibody [HRP]
NB7156	Goat anti-Rabbit IgG (H+L) Secondary Antibody
NBP2-24891	Rabbit IgG Isotype Control
H00139341-P01-10ug	Recombinant Human FUNDC1 GST (N-Term) Protein

### **Limitations**

This product is for research use only and is not approved for use in humans or in clinical diagnosis. Primary Antibodies are guaranteed for 1 year from date of receipt.

For more information on our 100% guarantee, please visit [www.novusbio.com/guarantee](http://www.novusbio.com/guarantee)

Earn gift cards/discounts by submitting a review: [www.novusbio.com/reviews/submit/NBP3-18250](http://www.novusbio.com/reviews/submit/NBP3-18250)

Earn gift cards/discounts by submitting a publication using this product:  
[www.novusbio.com/publications](http://www.novusbio.com/publications)

