

Product Datasheet

JMJD2B Antibody (8I0I1)

NBP3-16639-100ul

Unit Size: 100 ul

Store at -20C. Avoid freeze-thaw cycles.

www.novusbio.com



technical@novusbio.com

Protocols, Publications, Related Products, Reviews, Research Tools and Images at:
www.novusbio.com/NBP3-16639

Updated 9/9/2025 v.20.1

Earn rewards for product
reviews and publications.

Submit a publication at www.novusbio.com/publications

Submit a review at www.novusbio.com/reviews/destination/NBP3-16639



NBP3-16639-100ul

JMJD2B Antibody (8I0I1)

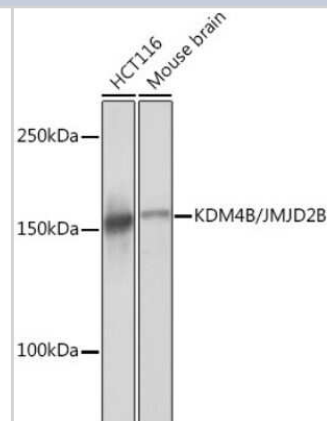
| Product Information | |
|----------------------|---|
| Unit Size | 100 ul |
| Concentration | Please see the vial label for concentration. If unlisted please contact technical services. |
| Storage | Store at -20C. Avoid freeze-thaw cycles. |
| Clonality | Monoclonal |
| Clone | 8I0I1 |
| Preservative | 0.02% Sodium Azide |
| Isotype | IgG |
| Purity | Affinity purified |
| Buffer | PBS (pH 7.3), 50% glycerol, 0.05% BSA |

| Product Description | |
|---------------------|--|
| Description | Novus Biologicals Rabbit JMJD2B Antibody (8I0I1) (NBP3-16639) is a recombinant monoclonal antibody validated for use in WB, ICC/IF, IP and ChIP. All Novus Biologicals antibodies are covered by our 100% guarantee. |
| Host | Rabbit |
| Gene ID | 23030 |
| Gene Symbol | KDM4B |
| Species | Human, Mouse, Rat |
| Immunogen | A synthetic peptide corresponding to a sequence within amino acids 50-150 of human JMJD2B (O94953). PPKEWKPRQTYDDIDDVVIPAPIQQVVTGQSGGLFTQYNIQKKAMTVGEYRRLA NSEKYCTPRHQDFDDLERKYWKNLTFVSPYIGADISGSLYDDDVAQWN |

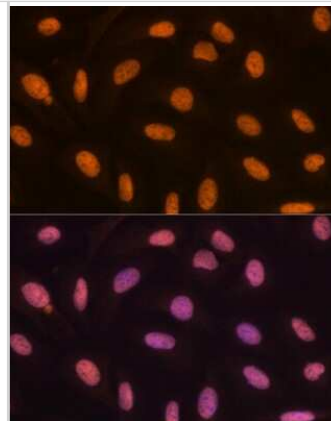
| Product Application Details | |
|------------------------------|--|
| Applications | Western Blot, Immunocytochemistry/ Immunofluorescence, Immunoprecipitation, Chromatin Immunoprecipitation (ChIP) |
| Recommended Dilutions | Western Blot 1:500 - 1:2000, Immunocytochemistry/ Immunofluorescence 1:50 - 1:200, Immunoprecipitation 1:500 - 1:1000, Chromatin Immunoprecipitation (ChIP) 1:500 - 1:1000 |

Images

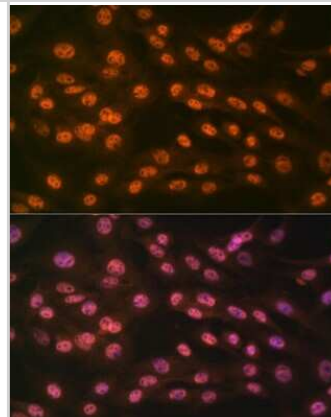
Western Blot: JMJD2B Antibody (8I0I1) [NBP3-16639] - Western blot analysis of extracts of various cell lines, using JMJD2B Rabbit mAb (NBP3-16639) at 1:1000 dilution. Secondary antibody: HRP Goat Anti-Rabbit IgG (H+L) at 1:10000 dilution. Lysates/proteins: 25ug per lane. Blocking buffer: 3% nonfat dry milk in TBST. Detection: ECL Basic Kit. Exposure time: 1s.



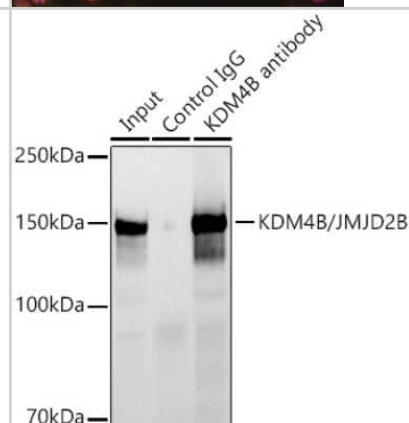
Immunocytochemistry/Immunofluorescence: JMJD2B Antibody (81011) [NBP3-16639] - Immunofluorescence analysis of U-2 OS cells using JMJD2B Rabbit mAb (NBP3-16639) at dilution of 1:100 (40x lens). Blue: DAPI for nuclear staining.



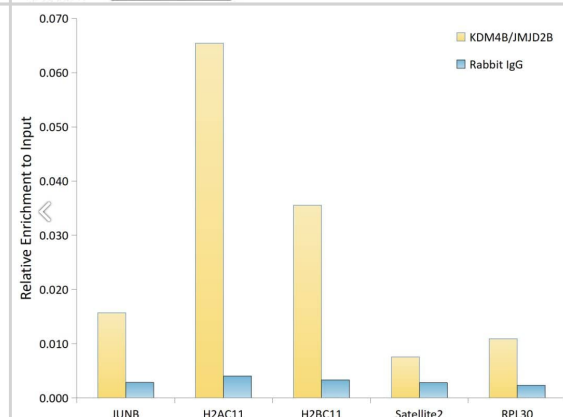
Immunocytochemistry/Immunofluorescence: JMJD2B Antibody (81011) [NBP3-16639] - Immunofluorescence analysis of C6 cells using JMJD2B Rabbit mAb (NBP3-16639) at dilution of 1:100 (40x lens). Blue: DAPI for nuclear staining.



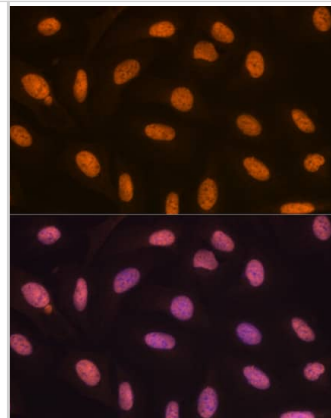
Immunoprecipitation: JMJD2B Antibody (81011) [NBP3-16639] - Immunoprecipitation analysis of 300ug extracts of HCT116 cells using 3ug JMJD2B antibody (NBP3-16639). Western blot was performed from the immunoprecipitate using JMJD2B antibody (NBP3-16639) at a dilution of 1:1000.



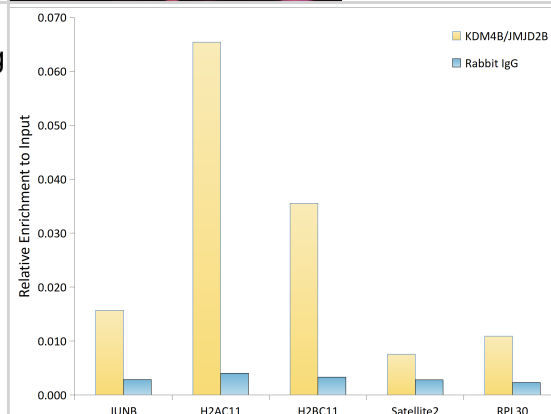
Chromatin Immunoprecipitation- JMJD2B Antibody (81011) [NBP3-16639] - Analysis of extracts of 5637; cells, using KDM4B/JMJD2B antibody and rabbit IgG. The amount of immunoprecipitated DNA was checked by quantitative PCR. Histogram was constructed by the ratios of the immunoprecipitated DNA to the input.



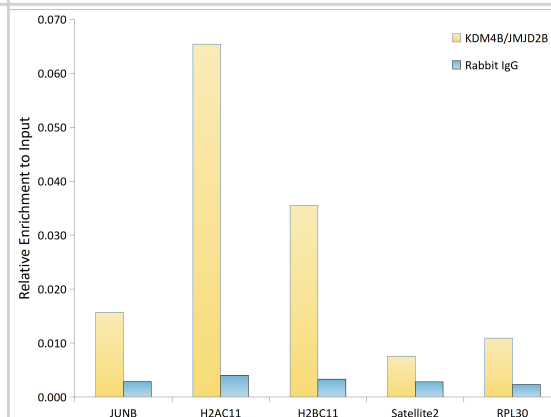
Immunocytochemistry/ Immunofluorescence: JMJD2B Antibody (8I011) [NBP3-16639] - Immunofluorescence analysis of U-2 OS cells using JMJD2B Rabbit mAb at dilution of 1:100 (40x lens). Secondary antibody: Cy3-conjugated Goat anti-Rabbit IgG (H+L) at 1:500 dilution. Blue: DAPI for nuclear staining.



Chromatin Immunoprecipitation: JMJD2B Antibody (8I011) [NBP3-16639] - Chromatin immunoprecipitation analysis of extracts of 5637; cells, using JMJD2B antibody and rabbit IgG. The amount of immunoprecipitated DNA was checked by quantitative PCR. Histogram was constructed by the ratios of the immunoprecipitated DNA to the input.



Chromatin Immunoprecipitation: JMJD2B Antibody (8I011) [JMJD2B] - Chromatin immunoprecipitation analysis of extracts of 5637; cells, using JMJD2B antibody and rabbit IgG. The amount of immunoprecipitated DNA was checked by quantitative PCR. Histogram was constructed by the ratios of the immunoprecipitated DNA to the input.





Novus Biologicals USA

10730 E. Briarwood Avenue
Centennial, CO 80112
USA
Phone: 303.730.1950
Toll Free: 1.888.506.6887
Fax: 303.730.1966
nb-customerservice@bio-techne.com

Bio-Techne Canada

21 Canmotor Ave
Toronto, ON M8Z 4E6
Canada
Phone: 905.827.6400
Toll Free: 855.668.8722
Fax: 905.827.6402
canada.inquires@bio-techne.com

Bio-Techne Ltd

19 Barton Lane
Abingdon Science Park
Abingdon, OX14 3NB, United Kingdom
Phone: (44) (0) 1235 529449
Free Phone: 0800 37 34 15
Fax: (44) (0) 1235 533420
info.EMEA@bio-techne.com

General Contact Information

www.novusbio.com
Technical Support: nb-technical@bio-techne.com
Orders: nb-customerservice@bio-techne.com
General: novus@novusbio.com

Products Related to NBP3-16639-100ul

| | |
|-------------|---|
| NBP2-33376H | Blue Marker Antibody (6F4-F6) [HRP] |
| HAF008 | Goat anti-Rabbit IgG Secondary Antibody [HRP] |
| NB7160 | Goat anti-Rabbit IgG (H+L) Secondary Antibody [HRP] |
| NBP2-24891 | Rabbit IgG Isotype Control |

Limitations

This product is for research use only and is not approved for use in humans or in clinical diagnosis. Primary Antibodies are guaranteed for 1 year from date of receipt.

For more information on our 100% guarantee, please visit www.novusbio.com/guarantee

Earn gift cards/discounts by submitting a review: www.novusbio.com/reviews/submit/NBP3-16639

Earn gift cards/discounts by submitting a publication using this product:
www.novusbio.com/publications

