

Product Datasheet

CS Citrate Synthase Antibody (4Z10Z8) NBP3-16438-100ul

Unit Size: 100 ul

Store at -20C. Avoid freeze-thaw cycles.

www.novusbio.com



technical@novusbio.com

Protocols, Publications, Related Products, Reviews, Research Tools and Images at:
www.novusbio.com/NBP3-16438

Updated 9/9/2025 v.20.1

Earn rewards for product
reviews and publications.

Submit a publication at www.novusbio.com/publications

Submit a review at www.novusbio.com/reviews/destination/NBP3-16438



NBP3-16438-100ul**CS Citrate Synthase Antibody (4Z10Z8)****Product Information**

Unit Size	100 ul
Concentration	Please see the vial label for concentration. If unlisted please contact technical services.
Storage	Store at -20C. Avoid freeze-thaw cycles.
Clonality	Monoclonal
Clone	4Z10Z8
Preservative	0.02% Sodium Azide
Isotype	IgG
Purity	Affinity purified
Buffer	PBS (pH 7.3), 50% glycerol, 0.05% BSA

Product Description

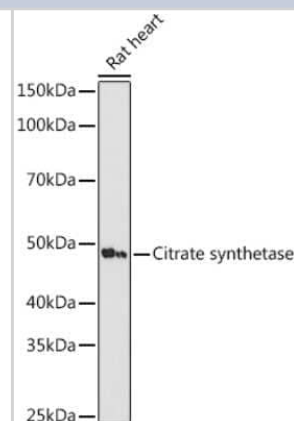
Description	Novus Biologicals Rabbit CS Citrate Synthase Antibody (4Z10Z8) (NBP3-16438) is a recombinant monoclonal antibody validated for use in IHC, WB and ICC/IF. All Novus Biologicals antibodies are covered by our 100% guarantee.
Host	Rabbit
Gene ID	1431
Gene Symbol	CS
Species	Human, Mouse, Rat
Immunogen	A synthetic peptide corresponding to a sequence within amino acids 367-466 of human CS Citrate Synthase (O75390). HLPNDPMFKLVLAQLYKIVPNVLEQGKAKNPWPNVDAHSGVLLQYYGMTEMN YYTVLFGVSRALGVLAQLIWSRALGFPLERPKSMSTEGLMKFVDSKSG

Product Application Details

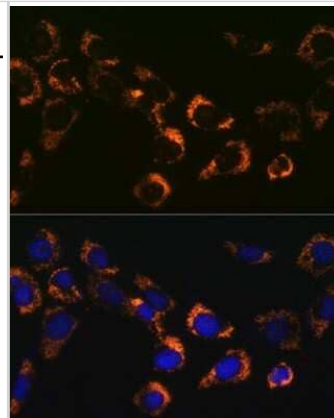
Applications	Western Blot, Immunohistochemistry-Paraffin, Immunocytochemistry/Immunofluorescence, Immunohistochemistry
Recommended Dilutions	Western Blot 1:500 - 1:1000, Immunohistochemistry 1:50 - 1:200, Immunocytochemistry/ Immunofluorescence 1:50 - 1:200, Immunohistochemistry-Paraffin

Images

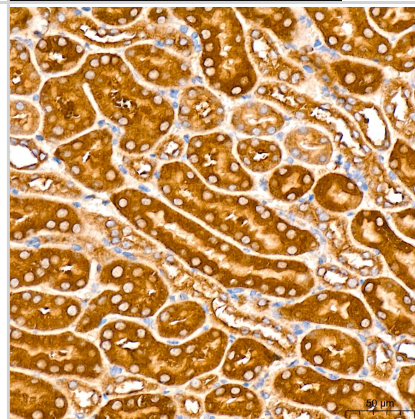
Western Blot: CS Citrate Synthase Antibody (4Z10Z8) [NBP3-16438] - Western blot analysis of extracts of Rat heart cells, using CS Citrate Synthase antibody (NBP3-16438) at 1:1000 dilution. Secondary antibody: HRP Goat Anti-Rabbit IgG (H+L) at 1:10000 dilution. Lysates/proteins: 25ug per lane. Blocking buffer: 3% nonfat dry milk in TBST. Detection: ECL Basic Kit. Exposure time: 180s.



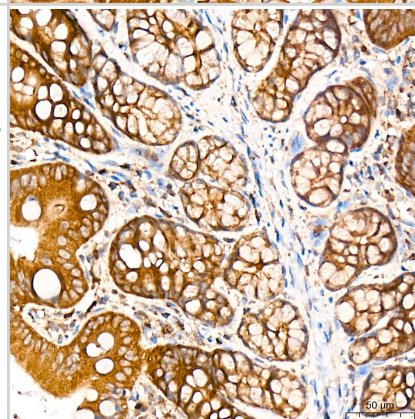
Immunocytochemistry/Immunofluorescence: CS Citrate Synthase Antibody (4Z10Z8) [NBP3-16438] - Immunofluorescence analysis of NIH-3T3 cells using CS Citrate Synthase Rabbit mAb (NBP3-16438) at dilution of 1:100 (40x lens). Blue: DAPI for nuclear staining.



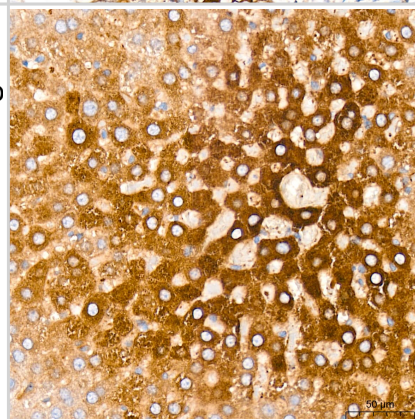
Immunohistochemistry: CS Citrate Synthase Antibody (4Z10Z8) [NBP3-16438] - Immunohistochemistry analysis of CS Citrate Synthase in paraffin-embedded mouse kidney tissue using CS Citrate Synthase Rabbit mAb at a dilution of 1:200 (40x lens). High pressure antigen retrieval was performed with 0.01 M citrate buffer (pH 6.0) prior to IHC staining.



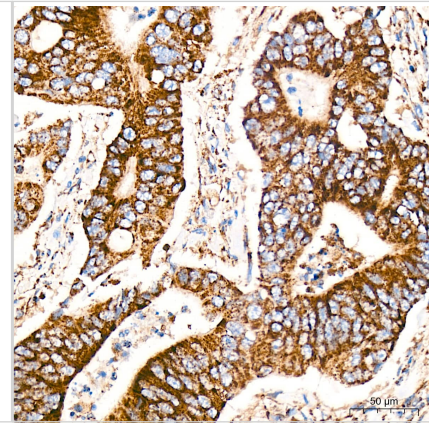
Immunohistochemistry: CS Citrate Synthase Antibody (4Z10Z8) [NBP3-16438] - Immunohistochemistry analysis of CS Citrate Synthase in paraffin-embedded rat colon tissue using CS Citrate Synthase Rabbit mAb at a dilution of 1:200 (40x lens). High pressure antigen retrieval was performed with 0.01 M citrate buffer (pH 6.0) prior to IHC staining.



Immunohistochemistry: CS Citrate Synthase Antibody (4Z10Z8) [NBP3-16438] - Immunohistochemistry analysis of CS Citrate Synthase in paraffin-embedded rat liver tissue using CS Citrate Synthase Rabbit mAb at a dilution of 1:200 (40x lens). High pressure antigen retrieval was performed with 0.01 M citrate buffer (pH 6.0) prior to IHC staining.



Immunohistochemistry: CS Citrate Synthase Antibody (4Z10Z8) [NBP3-16438] - Immunohistochemistry analysis of CS Citrate Synthase in paraffin-embedded human colon carcinoma tissue using CS Citrate Synthase Rabbit mAb at a dilution of 1:200 (40x lens). High pressure antigen retrieval was performed with 0.01 M citrate buffer (pH 6.0) prior to IHC staining.





Novus Biologicals USA

10730 E. Briarwood Avenue
Centennial, CO 80112
USA
Phone: 303.730.1950
Toll Free: 1.888.506.6887
Fax: 303.730.1966
nb-customerservice@bio-techne.com

Bio-Techne Canada

21 Canmotor Ave
Toronto, ON M8Z 4E6
Canada
Phone: 905.827.6400
Toll Free: 855.668.8722
Fax: 905.827.6402
canada.inquires@bio-techne.com

Bio-Techne Ltd

19 Barton Lane
Abingdon Science Park
Abingdon, OX14 3NB, United Kingdom
Phone: (44) (0) 1235 529449
Free Phone: 0800 37 34 15
Fax: (44) (0) 1235 533420
info.EMEA@bio-techne.com

General Contact Information

www.novusbio.com
Technical Support: nb-technical@bio-techne.com
Orders: nb-customerservice@bio-techne.com
General: novus@novusbio.com

Products Related to NBP3-16438-100ul

HAF008	Goat anti-Rabbit IgG Secondary Antibody [HRP]
NB7160	Goat anti-Rabbit IgG (H+L) Secondary Antibody [HRP]
NBP2-24891	Rabbit IgG Isotype Control
NBP2-51818-0.1mg	Recombinant Human CS Citrate Synthase His Protein

Limitations

This product is for research use only and is not approved for use in humans or in clinical diagnosis. Primary Antibodies are guaranteed for 1 year from date of receipt.

For more information on our 100% guarantee, please visit www.novusbio.com/guarantee

Earn gift cards/discounts by submitting a review: www.novusbio.com/reviews/submit/NBP3-16438

Earn gift cards/discounts by submitting a publication using this product:
www.novusbio.com/publications

