

# Product Datasheet

## Glucose 6 phosphate isomerase Antibody (2Y8R0) NBP3-16401-100ul

Unit Size: 100 ul

Store at -20C. Avoid freeze-thaw cycles.

[www.novusbio.com](http://www.novusbio.com)



[technical@novusbio.com](mailto:technical@novusbio.com)

Protocols, Publications, Related Products, Reviews, Research Tools and Images at:  
[www.novusbio.com/NBP3-16401](http://www.novusbio.com/NBP3-16401)

Updated 11/7/2023 v.20.1

Earn rewards for product  
reviews and publications.

Submit a publication at [www.novusbio.com/publications](http://www.novusbio.com/publications)

Submit a review at [www.novusbio.com/reviews/destination/NBP3-16401](http://www.novusbio.com/reviews/destination/NBP3-16401)

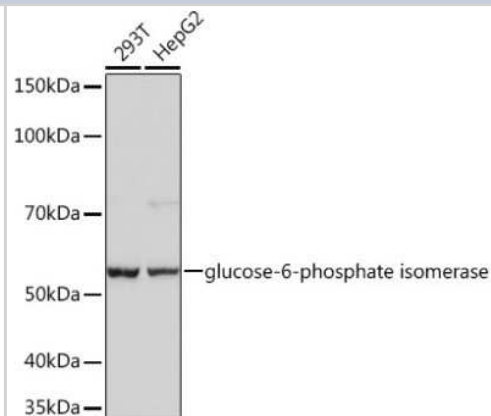


**NBP3-16401-100ul****Glucose 6 phosphate isomerase Antibody (2Y8R0)**

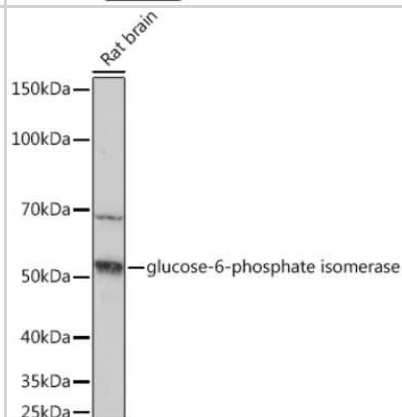
| <b>Product Information</b>         |   |
|------------------------------------|---|
| <b>Unit Size</b>                   | 100 ul  |
| <b>Concentration</b>               | Please see the vial label for concentration. If unlisted please contact technical services.   |
| <b>Storage</b>                     | Store at -20C. Avoid freeze-thaw cycles.  |
| <b>Clonality</b>                   | Monoclonal  |
| <b>Clone</b>                       | 2Y8R0   |
| <b>Preservative</b>                | 0.02% Sodium Azide  |
| <b>Isotype</b>                     | IgG   |
| <b>Purity</b>                      | Affinity purified   |
| <b>Buffer</b>                      | PBS, 0.05% BSA, 50% glycerol, pH7.3   |
| <b>Product Description</b>         |   |
| <b>Host</b>                        | Rabbit  |
| <b>Gene ID</b>                     | 2821  |
| <b>Gene Symbol</b>                 | GPI   |
| <b>Species</b>                     | Human   |
| <b>Immunogen</b>                   | A synthetic peptide corresponding to a sequence within amino acids 1-100 of human Glucose 6 phosphate isomerase (P06744).<br>MAALTRDPQFQKLQQWYREHRSELNLRRLFDANKDRFNHFSLTLNTNHGHILV<br>DYSKNLVTEDVMRMLVDLAKSRGVEAARERMFNGEKINYTEGRAVLH |
| <b>Product Application Details</b> |   |
| <b>Applications</b>                | Western Blot  |
| <b>Recommended Dilutions</b>       | Western Blot 1:500 - 1:1000   |

**Images**

Western Blot: Glucose 6 phosphate isomerase Antibody (2Y8R0) [NBP3-16401] - Western blot analysis of extracts of various cell lines, using Glucose 6 phosphate isomerase Rabbit mAb (NBP3-16401) at 1:1000 dilution. Secondary antibody: HRP Goat Anti-Rabbit IgG (H+L) at 1:10000 dilution. Lysates/proteins: 25ug per lane. Blocking buffer: 3% nonfat dry milk in TBST. Detection: ECL Basic Kit. Exposure time: 10s.



Western Blot: Glucose 6 phosphate isomerase Antibody (2Y8R0) [NBP3-16401] - Western blot analysis of extracts of Rat brain, using Glucose 6 phosphate isomerase Rabbit mAb (NBP3-16401) at 1:1000 dilution. Secondary antibody: HRP Goat Anti-Rabbit IgG (H+L) at 1:10000 dilution. Lysates/proteins: 25ug per lane. Blocking buffer: 3% nonfat dry milk in TBST. Detection: ECL Basic Kit. Exposure time: 60s.





### **Novus Biologicals USA**

10730 E. Briarwood Avenue  
Centennial, CO 80112  
USA  
Phone: 303.730.1950  
Toll Free: 1.888.506.6887  
Fax: 303.730.1966  
nb-customerservice@bio-techne.com

### **Bio-Techne Canada**

21 Canmotor Ave  
Toronto, ON M8Z 4E6  
Canada  
Phone: 905.827.6400  
Toll Free: 855.668.8722  
Fax: 905.827.6402  
canada.inquires@bio-techne.com

### **Bio-Techne Ltd**

19 Barton Lane  
Abingdon Science Park  
Abingdon, OX14 3NB, United Kingdom  
Phone: (44) (0) 1235 529449  
Free Phone: 0800 37 34 15  
Fax: (44) (0) 1235 533420  
info.EMEA@bio-techne.com

### **General Contact Information**

www.novusbio.com  
Technical Support: nb-technical@bio-techne.com  
Orders: nb-customerservice@bio-techne.com  
General: novus@novusbio.com

### **Products Related to NBP3-16401-100ul**

---

|                   |   |
|-------------------|---|
| HAF008            | Goat anti-Rabbit IgG Secondary Antibody [HRP]               |
| NB7160            | Goat anti-Rabbit IgG (H+L) Secondary Antibody [HRP]         |
| NBP2-24891        | Rabbit IgG Isotype Control                                  |
| NBP2-52232-0.02mg | Recombinant Human Glucose 6 phosphate isomerase His Protein |

---

### **Limitations**

This product is for research use only and is not approved for use in humans or in clinical diagnosis. Primary Antibodies are guaranteed for 1 year from date of receipt.

For more information on our 100% guarantee, please visit [www.novusbio.com/guarantee](http://www.novusbio.com/guarantee)

Earn gift cards/discounts by submitting a review: [www.novusbio.com/reviews/submit/NBP3-16401](http://www.novusbio.com/reviews/submit/NBP3-16401)

Earn gift cards/discounts by submitting a publication using this product:  
[www.novusbio.com/publications](http://www.novusbio.com/publications)

