

Product Datasheet

Protein Phosphatase 1 beta Antibody (5O9E7) NBP3-16389-100ul

Unit Size: 100 ul

Store at -20C. Avoid freeze-thaw cycles.

www.novusbio.com



technical@novusbio.com

Protocols, Publications, Related Products, Reviews, Research Tools and Images at:
www.novusbio.com/NBP3-16389

Updated 11/7/2023 v.20.1

Earn rewards for product
reviews and publications.

Submit a publication at www.novusbio.com/publications

Submit a review at www.novusbio.com/reviews/destination/NBP3-16389



NBP3-16389-100ul**Protein Phosphatase 1 beta Antibody (5O9E7)**

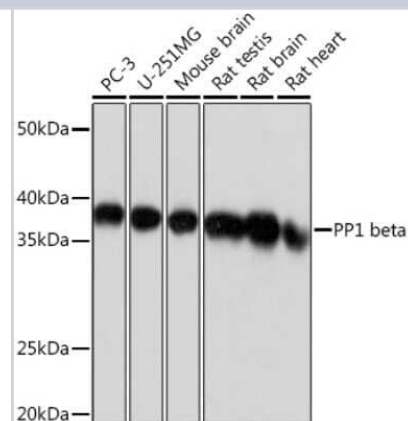
Product Information	
Unit Size	100 ul
Concentration	Please see the vial label for concentration. If unlisted please contact technical services.
Storage	Store at -20C. Avoid freeze-thaw cycles.
Clonality	Monoclonal
Clone	5O9E7
Preservative	0.02% Sodium Azide
Isotype	IgG
Purity	Affinity purified
Buffer	PBS, 0.05% BSA, 50% glycerol, pH7.3

Product Description	
Host	Rabbit
Gene ID	5500
Gene Symbol	PPP1CB
Species	Human, Mouse, Rat
Immunogen	A synthetic peptide corresponding to a sequence within amino acids 228-327 of human Protein Phosphatase 1 beta (P62140). ADVVSKFLNRHDLDLICRAHQVVEDGYEFFAKRQLVTLFSAPNYCGEFDNAGG MMSVDETLMCSFQILKPSEKKAKYQYGGLNSGRPVTTPRTANPPKKR

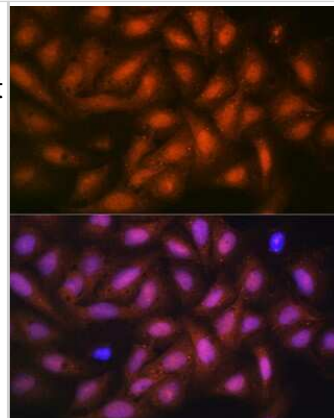
Product Application Details	
Applications	Western Blot, Immunocytochemistry/ Immunofluorescence, Immunohistochemistry, Immunohistochemistry-Paraffin
Recommended Dilutions	Western Blot 1:500 - 1:1000, Immunohistochemistry 1:50 - 1:200, Immunocytochemistry/ Immunofluorescence 1:50 - 1:200, Immunohistochemistry-Paraffin

Images

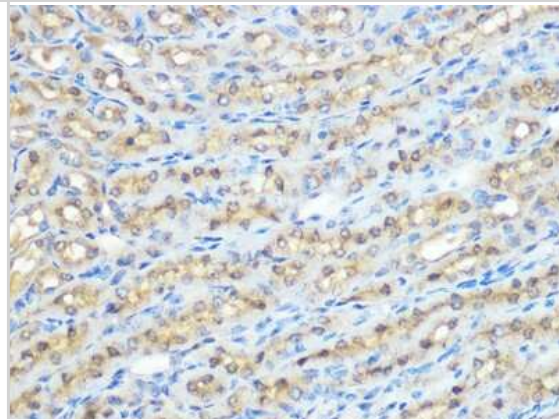
Western Blot: Protein Phosphatase 1 beta Antibody (5O9E7) [NBP3-16389] - Western blot analysis of extracts of various cell lines, using Protein Phosphatase 1 beta Rabbit mAb (NBP3-16389) at 1:1000 dilution. Secondary antibody: HRP Goat Anti-Rabbit IgG (H+L) at 1:10000 dilution. Lysates/proteins: 25ug per lane. Blocking buffer: 3% nonfat dry milk in TBST. Detection: ECL Basic Kit. Exposure time: 1s.



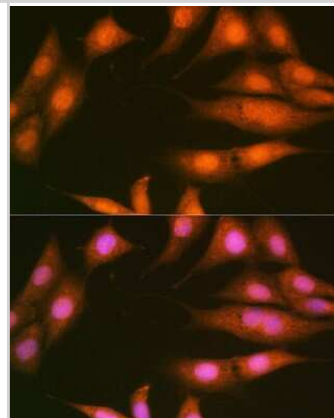
Immunocytochemistry/Immunofluorescence: Protein Phosphatase 1 beta Antibody (5O9E7) [NBP3-16389] - Immunofluorescence analysis of U-2 OS cells using Protein Phosphatase 1 beta Rabbit mAb (NBP3-16389) at dilution of 1:100 (40x lens). Blue: DAPI for nuclear staining.



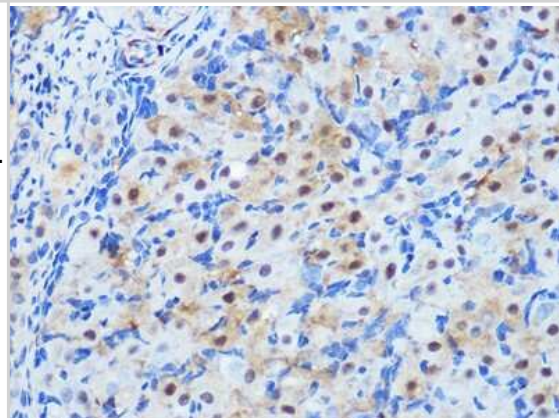
Immunohistochemistry-Paraffin: Protein Phosphatase 1 beta Antibody (5O9E7) [NBP3-16389] - Immunohistochemistry of paraffin-embedded mouse kidney using Protein Phosphatase 1 beta Rabbit mAb (NBP3-16389) at dilution of 1:100 (40x lens). Perform microwave antigen retrieval with 10 mM PBS buffer pH 7.2 before commencing with IHC staining protocol.



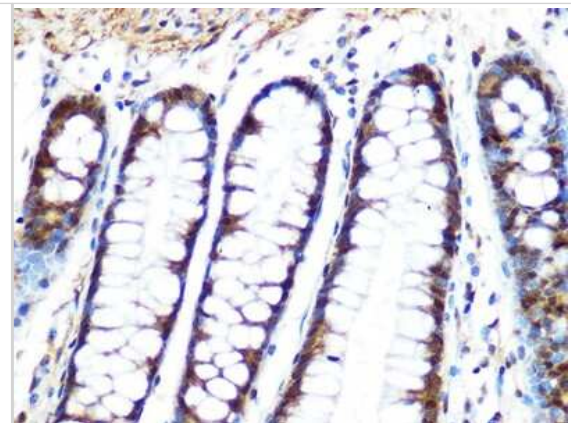
Immunocytochemistry/Immunofluorescence: Protein Phosphatase 1 beta Antibody (5O9E7) [NBP3-16389] - Immunofluorescence analysis of NIH-3T3 cells using Protein Phosphatase 1 beta Rabbit mAb (NBP3-16389) at dilution of 1:100 (40x lens). Blue: DAPI for nuclear staining.



Immunohistochemistry-Paraffin: Protein Phosphatase 1 beta Antibody (5O9E7) [NBP3-16389] - Immunohistochemistry of paraffin-embedded rat ovary using Protein Phosphatase 1 beta Rabbit mAb (NBP3-16389) at dilution of 1:100 (40x lens). Perform microwave antigen retrieval with 10 mM PBS buffer pH 7.2 before commencing with IHC staining protocol.



Immunohistochemistry-Paraffin: Protein Phosphatase 1 beta Antibody (5O9E7) [NBP3-16389] - Immunohistochemistry of paraffin-embedded human colon using Protein Phosphatase 1 beta Rabbit mAb (NBP3-16389) at dilution of 1:100 (40x lens). Perform microwave antigen retrieval with 10 mM PBS buffer pH 7.2 before commencing with IHC staining protocol.





Novus Biologicals USA

10730 E. Briarwood Avenue
Centennial, CO 80112
USA
Phone: 303.730.1950
Toll Free: 1.888.506.6887
Fax: 303.730.1966
nb-customerservice@bio-techne.com

Bio-Techne Canada

21 Canmotor Ave
Toronto, ON M8Z 4E6
Canada
Phone: 905.827.6400
Toll Free: 855.668.8722
Fax: 905.827.6402
canada.inquires@bio-techne.com

Bio-Techne Ltd

19 Barton Lane
Abingdon Science Park
Abingdon, OX14 3NB, United Kingdom
Phone: (44) (0) 1235 529449
Free Phone: 0800 37 34 15
Fax: (44) (0) 1235 533420
info.EMEA@bio-techne.com

General Contact Information

www.novusbio.com
Technical Support: nb-technical@bio-techne.com
Orders: nb-customerservice@bio-techne.com
General: novus@novusbio.com

Products Related to NBP3-16389-100ul

HAF008	Goat anti-Rabbit IgG Secondary Antibody [HRP]
NB7160	Goat anti-Rabbit IgG (H+L) Secondary Antibody [HRP]
NBP2-24891	Rabbit IgG Isotype Control
H00005500-Q01-10ug	Recombinant Human Protein Phosphatase 1 beta GST (N-Term) Protein

Limitations

This product is for research use only and is not approved for use in humans or in clinical diagnosis. Primary Antibodies are guaranteed for 1 year from date of receipt.

For more information on our 100% guarantee, please visit www.novusbio.com/guarantee

Earn gift cards/discounts by submitting a review: www.novusbio.com/reviews/submit/NBP3-16389

Earn gift cards/discounts by submitting a publication using this product:
www.novusbio.com/publications

