

Product Datasheet

LXR alpha/NR1H3 Antibody (7Z4H10) NBP3-16304-100ul

Unit Size: 100 ul

Store at -20C. Avoid freeze-thaw cycles.

www.novusbio.com



technical@novusbio.com

Protocols, Publications, Related Products, Reviews, Research Tools and Images at:
www.novusbio.com/NBP3-16304

Updated 9/26/2024 v.20.1

Earn rewards for product
reviews and publications.

Submit a publication at www.novusbio.com/publications

Submit a review at www.novusbio.com/reviews/destination/NBP3-16304



NBP3-16304-100ul

LXR alpha/NR1H3 Antibody (7Z4H10)

Product Information

Unit Size	100 ul
Concentration	Please see the vial label for concentration. If unlisted please contact technical services.
Storage	Store at -20C. Avoid freeze-thaw cycles.
Clonality	Monoclonal
Clone	7Z4H10
Preservative	0.02% Sodium Azide
Isotype	IgG
Purity	Affinity purified
Buffer	PBS, 0.05% BSA, 50% glycerol, pH7.3
Target Molecular Weight	50 kDa

Product Description

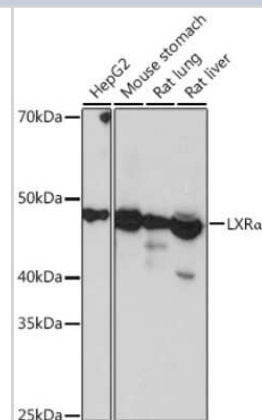
Host	Rabbit
Gene ID	10062
Gene Symbol	NR1H3
Species	Human, Mouse, Rat
Immunogen	A synthetic peptide corresponding to a sequence within amino acids 1-100 of human LXR alpha/NR1H3 (Q13133). MSLWLGA P VPDIP P DSAVELWKPGAQDASSQAQGGSSCILREEARMPHSAGG TAGVGLEAAEPTALLTRAEP P SEPTEIRPQKRKKGPA P KMLGNELCSV

Product Application Details

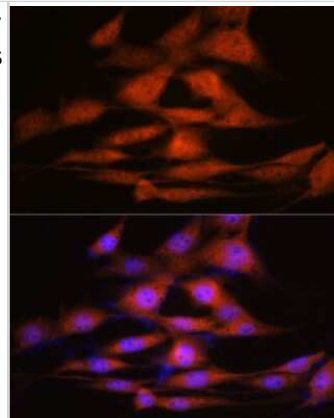
Applications	Western Blot, ELISA, Immunocytochemistry/ Immunofluorescence, Immunohistochemistry, Immunohistochemistry-Paraffin
Recommended Dilutions	Western Blot 1:500 - 1:1000, ELISA, Immunohistochemistry 1:50 - 1:200, Immunocytochemistry/ Immunofluorescence 1:50 - 1:200, Immunohistochemistry-Paraffin

Images

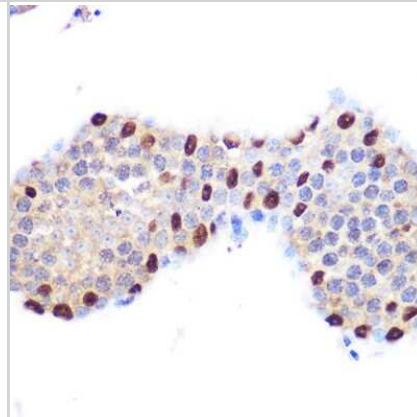
Western Blot: LXR alpha/NR1H3 Antibody (7Z4H10) [NBP3-16304] - Western blot analysis of extracts of various cell lines, using LXR alpha/NR1H3 Rabbit mAb (NBP3-16304) at 1:1000 dilution. Secondary antibody: HRP Goat Anti-Rabbit IgG (H+L) at 1:10000 dilution. Lysates/proteins: 25ug per lane. Blocking buffer: 3% nonfat dry milk in TBST. Detection: ECL Basic Kit. Exposure time: 3s.



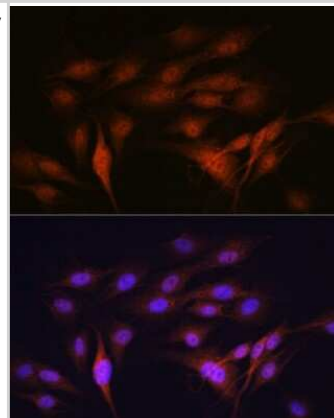
Immunocytochemistry/Immunofluorescence: LXR alpha/NR1H3 Antibody (7Z4H10) [NBP3-16304] - Immunofluorescence analysis of NIH-3T3 cells using LXR alpha/NR1H3 Rabbit mAb (NBP3-16304) at dilution of 1:100 (40x lens). Blue: DAPI for nuclear staining.



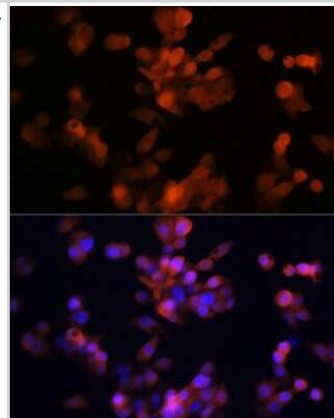
Immunohistochemistry-Paraffin: LXR alpha/NR1H3 Antibody (7Z4H10) [NBP3-16304] - Immunohistochemistry of paraffin-embedded mouse testis using LXR alpha/NR1H3 Rabbit mAb (NBP3-16304) at dilution of 1:100 (40x lens). Perform microwave antigen retrieval with 10 mM PBS buffer pH 7.2 before commencing with IHC staining protocol.



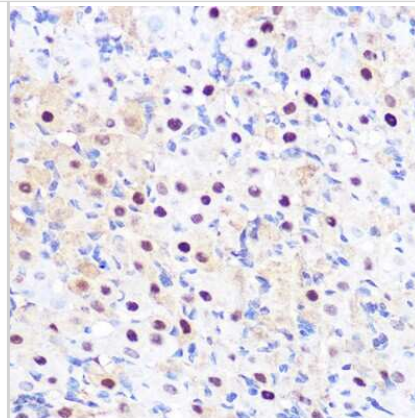
Immunocytochemistry/Immunofluorescence: LXR alpha/NR1H3 Antibody (7Z4H10) [NBP3-16304] - Immunofluorescence analysis of C6 cells using LXR alpha/NR1H3 Rabbit mAb (NBP3-16304) at dilution of 1:100 (40x lens). Blue: DAPI for nuclear staining.



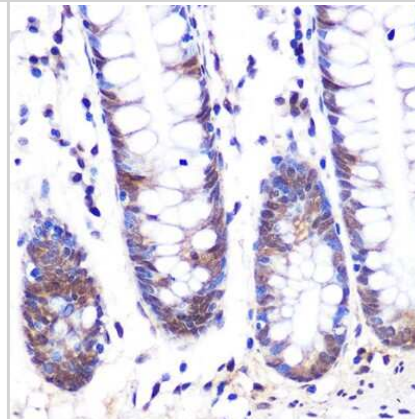
Immunocytochemistry/Immunofluorescence: LXR alpha/NR1H3 Antibody (7Z4H10) [NBP3-16304] - Immunofluorescence analysis of Hep G2 cells using LXR alpha/NR1H3 Rabbit mAb (NBP3-16304) at dilution of 1:100 (40x lens). Blue: DAPI for nuclear staining.



Immunohistochemistry-Paraffin: LXR alpha/NR1H3 Antibody (7Z4H10) [NBP3-16304] - Immunohistochemistry of paraffin-embedded rat ovary using LXR alpha/NR1H3 Rabbit mAb (NBP3-16304) at dilution of 1:100 (40x lens). Perform microwave antigen retrieval with 10 mM PBS buffer pH 7.2 before commencing with IHC staining protocol.



Immunohistochemistry-Paraffin: LXR alpha/NR1H3 Antibody (7Z4H10) [NBP3-16304] - Immunohistochemistry of paraffin-embedded human colon using LXR alpha/NR1H3 Rabbit mAb (NBP3-16304) at dilution of 1:100 (40x lens). Perform microwave antigen retrieval with 10 mM PBS buffer pH 7.2 before commencing with IHC staining protocol.





Novus Biologicals USA

10730 E. Briarwood Avenue
Centennial, CO 80112
USA
Phone: 303.730.1950
Toll Free: 1.888.506.6887
Fax: 303.730.1966
nb-customerservice@bio-techne.com

Bio-Techne Canada

21 Canmotor Ave
Toronto, ON M8Z 4E6
Canada
Phone: 905.827.6400
Toll Free: 855.668.8722
Fax: 905.827.6402
canada.inquires@bio-techne.com

Bio-Techne Ltd

19 Barton Lane
Abingdon Science Park
Abingdon, OX14 3NB, United Kingdom
Phone: (44) (0) 1235 529449
Free Phone: 0800 37 34 15
Fax: (44) (0) 1235 533420
info.EMEA@bio-techne.com

General Contact Information

www.novusbio.com
Technical Support: nb-technical@bio-techne.com
Orders: nb-customerservice@bio-techne.com
General: novus@novusbio.com

Products Related to NBP3-16304-100ul

HAF008	Goat anti-Rabbit IgG Secondary Antibody [HRP]
NB7160	Goat anti-Rabbit IgG (H+L) Secondary Antibody [HRP]
NBP2-24891	Rabbit IgG Isotype Control
NB400-157PEP	LXR alpha/NR1H3 Antibody Blocking Peptide

Limitations

This product is for research use only and is not approved for use in humans or in clinical diagnosis. Primary Antibodies are guaranteed for 1 year from date of receipt.

For more information on our 100% guarantee, please visit www.novusbio.com/guarantee

Earn gift cards/discounts by submitting a review: www.novusbio.com/reviews/submit/NBP3-16304

Earn gift cards/discounts by submitting a publication using this product:
www.novusbio.com/publications

