

Product Datasheet

Poly-Ubiquitin Antibody (5Y8J0) - K48 Linkage NBP3-16232-100ul

Unit Size: 100 ul

Store at -20C. Avoid freeze-thaw cycles.

www.novusbio.com



technical@novusbio.com

Protocols, Publications, Related Products, Reviews, Research Tools and Images at:
www.novusbio.com/NBP3-16232

Updated 10/22/2024 v.20.1

Earn rewards for product
reviews and publications.

Submit a publication at www.novusbio.com/publications

Submit a review at www.novusbio.com/reviews/destination/NBP3-16232



NBP3-16232-100ul

Poly-Ubiquitin Antibody (5Y8J0) - K48 Linkage

Product Information	
Unit Size	100 ul
Concentration	Please see the vial label for concentration. If unlisted please contact technical services.
Storage	Store at -20C. Avoid freeze-thaw cycles.
Clonality	Monoclonal
Clone	5Y8J0
Preservative	0.02% Sodium Azide
Isotype	IgG
Purity	Affinity purified
Buffer	PBS, 0.05% BSA, 50% glycerol, pH7.3
Target Molecular Weight	26 kDa

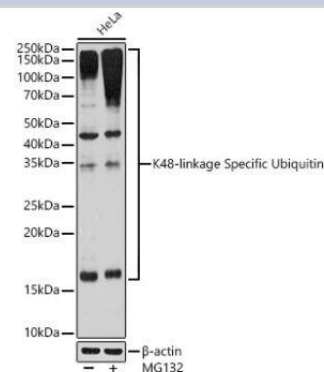
Product Description	
Host	Rabbit
Gene ID	6233
Gene Symbol	RPS27A
Species	Human, Mouse, Rat
Immunogen	A synthetic peptide corresponding to a sequence within amino acids 1-100 of human Poly-Ubiquitin (P0CG47). MQIFVKTLTGKTITLEVEPSDTIENVKAKIQDKEGIPPDQQRLIFAGKQLEDGRTLSDYNIQKESTLHLVLRRLRGGMQIFVKTLTGKTITLEVEPSDTIE

Product Application Details	
Applications	Western Blot, ELISA, Immunocytochemistry/ Immunofluorescence
Recommended Dilutions	Western Blot 1:500 - 1:2000, ELISA Recommended starting concentration is 1 µg/mL. Please optimize the concentration based on your specific assay requirements., Immunocytochemistry/ Immunofluorescence 1:50 - 1:200

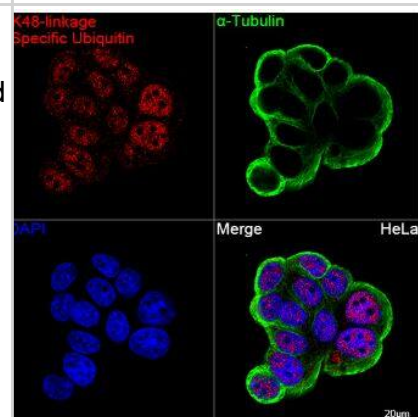


Images

Western Blot: Poly-Ubiquitin Antibody (5Y8J0) - K48 Linkage [NBP3-16232] -Analysis of lysates from HeLa cells using K48-linkage Specific Ubiquitin Rabbit mAb at 1:1000 dilution incubated overnight at 4°C. HeLa cells were treated by MG132 (50 µM) at 37°C for 90 minutes. Secondary antibody: HRP-conjugated Goat anti-Rabbit IgG (H+L) at 1:10000 dilution. Lysates/proteins: 25µg per lane. Blocking buffer: 3% nonfat dry milk in TBST. Detection: ECL Basic Kit. Exposure time: 180s.



Immunocytochemistry/Immunofluorescence: Poly-Ubiquitin Antibody (5Y8J0) - K48 Linkage [NBP3-16232] - Confocal imaging of MCF7 cells using K48-linkage Specific Ubiquitin Rabbit mAb (dilution 1:100) followed by a further incubation with Cy3 Goat Anti-Rabbit IgG (H+L) (dilution 1:500)(Red).The cells were counterstained with α-Tubulin Mouse mAb (dilution 1:400) followed by incubation with ABflo® 488-conjugated Goat Anti-Mouse IgG (H+L) Ab (dilution 1:500) (Green).DAPI was used for nuclear staining (Blue). Objective: 100x.





Novus Biologicals USA

10730 E. Briarwood Avenue
Centennial, CO 80112
USA
Phone: 303.730.1950
Toll Free: 1.888.506.6887
Fax: 303.730.1966
nb-customerservice@bio-techne.com

Bio-Techne Canada

21 Canmotor Ave
Toronto, ON M8Z 4E6
Canada
Phone: 905.827.6400
Toll Free: 855.668.8722
Fax: 905.827.6402
canada.inquires@bio-techne.com

Bio-Techne Ltd

19 Barton Lane
Abingdon Science Park
Abingdon, OX14 3NB, United Kingdom
Phone: (44) (0) 1235 529449
Free Phone: 0800 37 34 15
Fax: (44) (0) 1235 533420
info.EMEA@bio-techne.com

General Contact Information

www.novusbio.com
Technical Support: nb-technical@bio-techne.com
Orders: nb-customerservice@bio-techne.com
General: novus@novusbio.com

Products Related to NBP3-16232-100ul

HAF008	Goat anti-Rabbit IgG Secondary Antibody [HRP]
NB7160	Goat anti-Rabbit IgG (H+L) Secondary Antibody [HRP]
NBP2-24891	Rabbit IgG Isotype Control
U-100H-10M	Ubiquitin [Unconjugated]

Limitations

This product is for research use only and is not approved for use in humans or in clinical diagnosis. Primary Antibodies are guaranteed for 1 year from date of receipt.

For more information on our 100% guarantee, please visit www.novusbio.com/guarantee

Earn gift cards/discounts by submitting a review: www.novusbio.com/reviews/submit/NBP3-16232

Earn gift cards/discounts by submitting a publication using this product:
www.novusbio.com/publications

