

Product Datasheet

HSP70/HSPA1A Antibody - Azide and BSA Free NBP3-16090

Unit Size: 100 ul

Store at -20C. Avoid freeze-thaw cycles.

www.novusbio.com



technical@novusbio.com

Protocols, Publications, Related Products, Reviews, Research Tools and Images at:
www.novusbio.com/NBP3-16090

Updated 9/30/2024 v.20.1

Earn rewards for product
reviews and publications.

Submit a publication at www.novusbio.com/publications

Submit a review at www.novusbio.com/reviews/destination/NBP3-16090



NBP3-16090

HSP70/HSPA1A Antibody - Azide and BSA Free

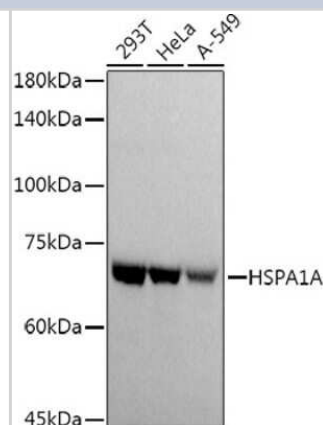
Product Information	
Unit Size	100 ul
Concentration	Please see the vial label for concentration. If unlisted please contact technical services.
Storage	Store at -20C. Avoid freeze-thaw cycles.
Clonality	Polyclonal
Preservative	0.05% Proclin 300
Isotype	IgG
Purity	Affinity purified
Buffer	PBS, 50% glycerol, pH7.3

Product Description	
Host	Rabbit
Gene ID	3303
Gene Symbol	HSPA1A
Species	Human, Mouse, Rat
Immunogen	A synthetic peptide corresponding to a sequence within amino acids 500-600 of human HSP70/HSPA1A (NP_005336.3). KITITNDKGRLSKEEIERMVQEAKEYKAEDEVRERVSAKNALESYAFNMKSAV EDEGLKKGKISEADKKKVLDKCQEVISWLDANTLAEKDEFEHKRKELE

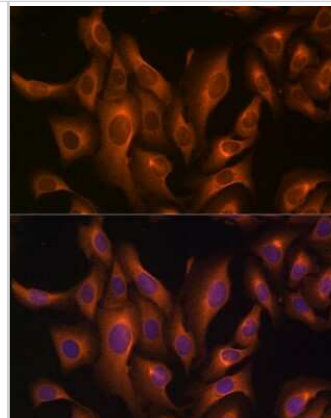
Product Application Details	
Applications	Western Blot, Immunocytochemistry/ Immunofluorescence, Immunohistochemistry, Immunohistochemistry-Paraffin
Recommended Dilutions	Western Blot 1:500 - 1:1000, Immunohistochemistry 1:50 - 1:200, Immunocytochemistry/ Immunofluorescence 1:50 - 1:200, Immunohistochemistry-Paraffin

Images

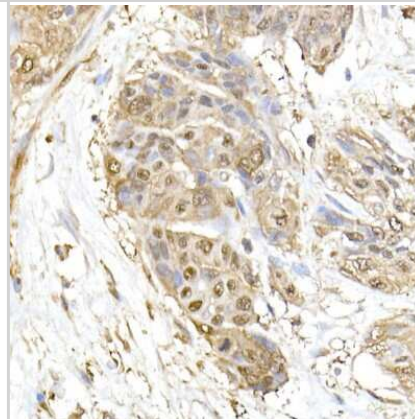
Western Blot: HSP70/HSPA1A Antibody [NBP3-16090] - Western blot analysis of extracts of various cell lines, using HSP70/HSPA1A antibody (NBP3-16090) at 1:1000 dilution. Secondary antibody: HRP Goat Anti-Rabbit IgG (H+L) at 1:10000 dilution. Lysates/proteins: 25ug per lane. Blocking buffer: 3% nonfat dry milk in TBST. Detection: ECL Basic Kit. Exposure time: 0.5s.



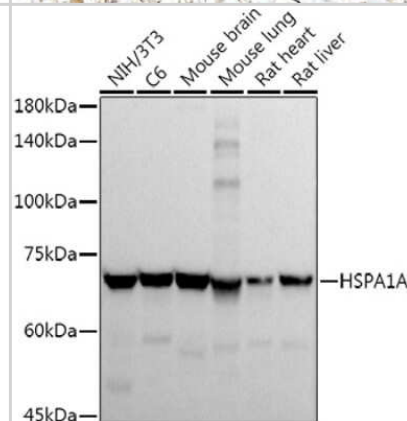
Immunocytochemistry/Immunofluorescence: HSP70/HSPA1A Antibody [NBP3-16090] - Immunofluorescence analysis of U2OS cells using HSP70/HSPA1A Rabbit pAb (NBP3-16090) at dilution of 1:100 (40x lens). Blue: DAPI for nuclear staining.



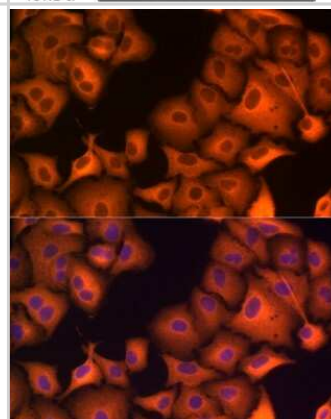
Immunohistochemistry-Paraffin: HSP70/HSPA1A Antibody [NBP3-16090] - Immunohistochemistry of paraffin-embedded human esophageal cancer using HSP70/HSPA1A Rabbit pAb (NBP3-16090) at dilution of 1:150 (40x lens). Perform high pressure antigen retrieval with 10 mM citrate buffer pH 6.0 before commencing with IHC staining protocol.



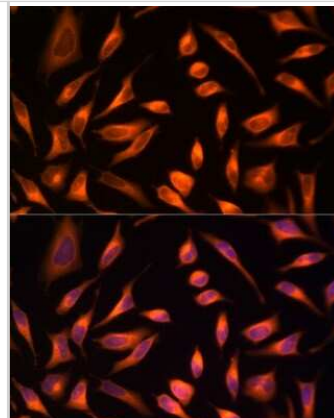
Western Blot: HSP70/HSPA1A Antibody [NBP3-16090] - Western blot analysis of extracts of various cell lines, using HSP70/HSPA1A antibody (NBP3-16090) at 1:1000 dilution. Secondary antibody: HRP Goat Anti-Rabbit IgG (H+L) at 1:10000 dilution. Lysates/proteins: 25ug per lane. Blocking buffer: 3% nonfat dry milk in TBST. Detection: ECL Basic Kit. Exposure time: 10s.



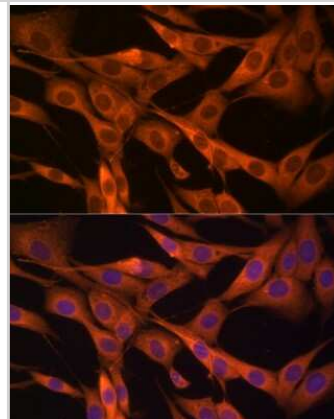
Immunocytochemistry/Immunofluorescence: HSP70/HSPA1A Antibody [NBP3-16090] - Immunofluorescence analysis of A-549 cells using HSP70/HSPA1A Rabbit pAb (NBP3-16090) at dilution of 1:100 (40x lens). Blue: DAPI for nuclear staining.



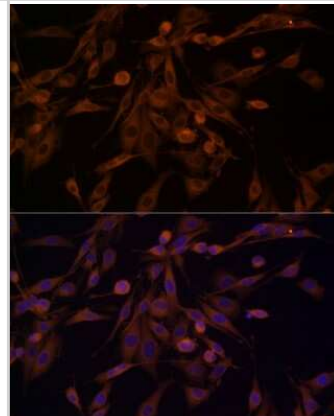
Immunocytochemistry/Immunofluorescence: HSP70/HSPA1A Antibody [NBP3-16090] - Immunofluorescence analysis of HeLa cells using HSP70/HSPA1A Rabbit pAb (NBP3-16090) at dilution of 1:100 (40x lens). Blue: DAPI for nuclear staining.



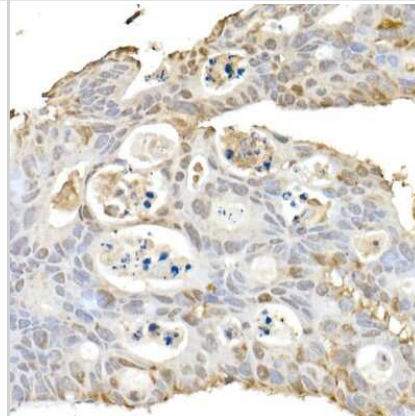
Immunocytochemistry/Immunofluorescence: HSP70/HSPA1A Antibody [NBP3-16090] - Immunofluorescence analysis of NIH/3T3 cells using HSP70/HSPA1A Rabbit pAb (NBP3-16090) at dilution of 1:100 (40x lens). Blue: DAPI for nuclear staining.



Immunocytochemistry/Immunofluorescence: HSP70/HSPA1A Antibody [NBP3-16090] - Immunofluorescence analysis of PC-12 cells using HSP70/HSPA1A Rabbit pAb (NBP3-16090) at dilution of 1:100 (40x lens). Blue: DAPI for nuclear staining.



Immunohistochemistry-Paraffin: HSP70/HSPA1A Antibody [NBP3-16090] - Immunohistochemistry of paraffin-embedded human colon carcinoma using HSP70/HSPA1A Rabbit pAb (NBP3-16090) at dilution of 1:150 (40x lens). Perform high pressure antigen retrieval with 10 mM citrate buffer pH 6.0 before commencing with IHC staining protocol.





Novus Biologicals USA

10730 E. Briarwood Avenue
Centennial, CO 80112
USA
Phone: 303.730.1950
Toll Free: 1.888.506.6887
Fax: 303.730.1966
nb-customerservice@bio-techne.com

Bio-Techne Canada

21 Canmotor Ave
Toronto, ON M8Z 4E6
Canada
Phone: 905.827.6400
Toll Free: 855.668.8722
Fax: 905.827.6402
canada.inquires@bio-techne.com

Bio-Techne Ltd

19 Barton Lane
Abingdon Science Park
Abingdon, OX14 3NB, United Kingdom
Phone: (44) (0) 1235 529449
Free Phone: 0800 37 34 15
Fax: (44) (0) 1235 533420
info.EMEA@bio-techne.com

General Contact Information

www.novusbio.com
Technical Support: nb-technical@bio-techne.com
Orders: nb-customerservice@bio-techne.com
General: novus@novusbio.com

Limitations

This product is for research use only and is not approved for use in humans or in clinical diagnosis. Primary Antibodies are guaranteed for 1 year from date of receipt.

For more information on our 100% guarantee, please visit www.novusbio.com/guarantee

Earn gift cards/discounts by submitting a review: www.novusbio.com/reviews/submit/NBP3-16090

Earn gift cards/discounts by submitting a publication using this product:
www.novusbio.com/publications

