

# Product Datasheet

## Talin2 Antibody (7D1Y0)

**NBP3-15932-100ul**

Unit Size: 100 ul

Store at -20C. Avoid freeze-thaw cycles.

[www.novusbio.com](http://www.novusbio.com)



[technical@novusbio.com](mailto:technical@novusbio.com)

Protocols, Publications, Related Products, Reviews, Research Tools and Images at:  
[www.novusbio.com/NBP3-15932](http://www.novusbio.com/NBP3-15932)

Updated 9/9/2025 v.20.1

Earn rewards for product  
reviews and publications.

Submit a publication at [www.novusbio.com/publications](http://www.novusbio.com/publications)

Submit a review at [www.novusbio.com/reviews/destination/NBP3-15932](http://www.novusbio.com/reviews/destination/NBP3-15932)



**NBP3-15932-100ul**

Talin2 Antibody (7D1Y0)

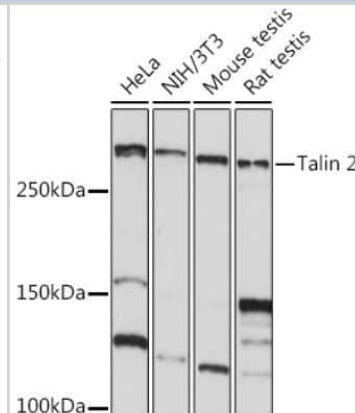
Product Information	
Unit Size	100 ul
Concentration	Please see the vial label for concentration. If unlisted please contact technical services.
Storage	Store at -20C. Avoid freeze-thaw cycles.
Clonality	Monoclonal
Clone	7D1Y0
Preservative	0.02% Sodium Azide
Isotype	IgG
Purity	Affinity purified
Buffer	PBS (pH 7.3), 50% glycerol, 0.05% BSA
Target Molecular Weight	272 kDa

Product Description	
Description	Novus Biologicals Rabbit Talin2 Antibody (7D1Y0) (NBP3-15932) is a recombinant monoclonal antibody validated for use in IHC, WB, ELISA and ICC/IF. All Novus Biologicals antibodies are covered by our 100% guarantee.
Host	Rabbit
Gene ID	83660
Gene Symbol	TLN2
Species	Human, Mouse, Rat
Immunogen	A synthetic peptide corresponding to a sequence within amino acids 350-450 of human Talin2 (Q9Y4G6). VLQEWPLTTVKRWAASPKSFTLDFGEYQESYYSVQTTEGEQISQLIAGYIDIILK KKQSKDRFGLEGDEESTMLEESVSPKKSTILQQQFNRTGKAEHGSV

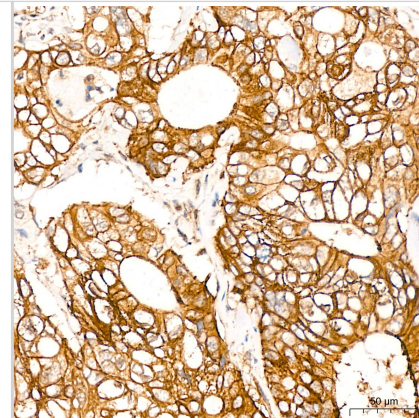
Product Application Details	
Applications	Western Blot, Immunohistochemistry-Paraffin, ELISA, Immunocytochemistry/Immunofluorescence, Immunohistochemistry
Recommended Dilutions	Western Blot 1:1000 - 1:6000, ELISA Recommended starting concentration is 1 ug/mL, Immunohistochemistry 1:500 - 1:2000, Immunocytochemistry/Immunofluorescence 1:100 - 1:400, Immunohistochemistry-Paraffin 1:500 - 1:2000

**Images**

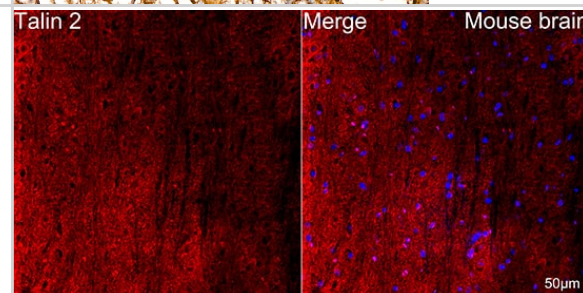
Western Blot: Talin2 Antibody (7D1Y0) [NBP3-15932] - Western blot analysis of extracts of various cell lines, using Talin2 Rabbit mAb (NBP3-15932) at 1:1000 dilution. Secondary antibody: HRP Goat Anti-Rabbit IgG (H+L) at 1:10000 dilution. Lysates/proteins: 25ug per lane. Blocking buffer: 3% nonfat dry milk in TBST. Detection: ECL Basic Kit. Exposure time: 10s.



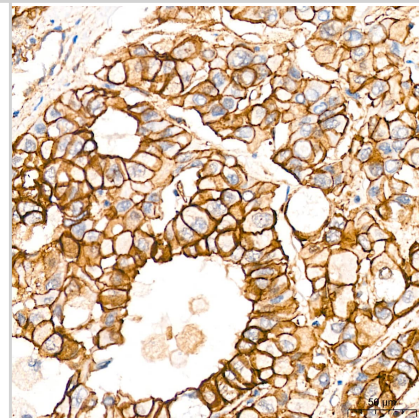
**Immunohistochemistry: Talin2 Antibody (7D1Y0) [Talin2]** - Immunohistochemistry analysis of paraffin-embedded Human colon carcinoma tissue using Talin2 Rabbit mAb at a dilution of 1:500 (40x lens). High pressure antigen retrieval was performed with 0.01 M citrate buffer (pH 6.0) prior to IHC staining.



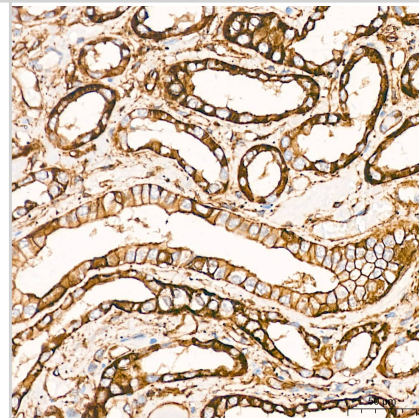
**Immunocytochemistry/ Immunofluorescence: Talin2 Antibody (7D1Y0) [Talin2]** - Confocal imaging of paraffin-embedded Mouse brain tissue using Talin2 Rabbit mAb followed by a further incubation with Cy3 Goat Anti-Rabbit IgG (H+L). DAPI was used for nuclear staining (Blue). Objective: 40x. Perform microwave antigen retrieval with 0.01 M citrate buffer (pH 6.0) prior to IF staining.



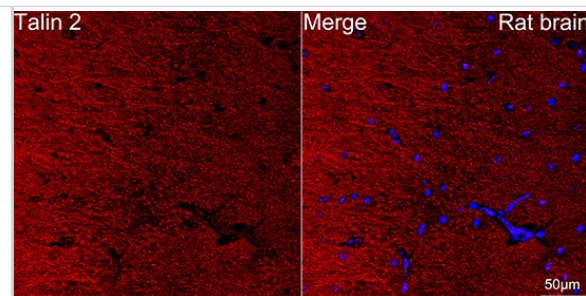
**Immunohistochemistry: Talin2 Antibody (7D1Y0) [Talin2]** - Immunohistochemistry analysis of paraffin-embedded Human liver cancer tissue using Talin2 Rabbit mAb at a dilution of 1:500 (40x lens). High pressure antigen retrieval was performed with 0.01 M citrate buffer (pH 6.0) prior to IHC staining.



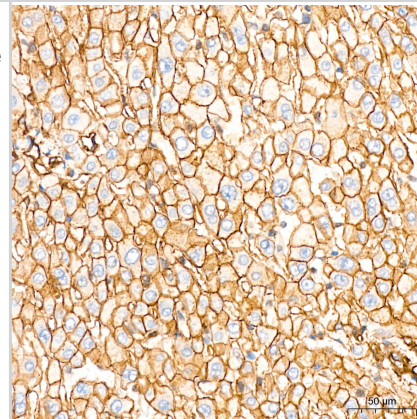
**Immunohistochemistry: Talin2 Antibody (7D1Y0) [Talin2]** - Immunohistochemistry analysis of paraffin-embedded Human kidney tissue using Talin2 Rabbit mAb at a dilution of 1:500 (40x lens). High pressure antigen retrieval was performed with 0.01 M citrate buffer (pH 6.0) prior to IHC staining.



Immunocytochemistry/ Immunofluorescence: Talin2 Antibody (7D1Y0) [Talin2] - Confocal imaging of paraffin-embedded Rat brain tissue using Talin2 Rabbit mAb followed by a further incubation with Cy3 Goat Anti-Rabbit IgG (H+L) . DAPI was used for nuclear staining (Blue). Objective: 40x. Perform microwave antigen retrieval with 0.01 M citrate buffer (pH 6.0) prior to IF staining.



Immunohistochemistry: Talin2 Antibody (7D1Y0) [Talin2] - Immunohistochemistry analysis of paraffin-embedded Human liver tissue using Talin2 Rabbit mAb at a dilution of 1:500 (40x lens). High pressure antigen retrieval was performed with 0.01 M citrate buffer (pH 6.0) prior to IHC staining.





### **Novus Biologicals USA**

10730 E. Briarwood Avenue  
Centennial, CO 80112  
USA  
Phone: 303.730.1950  
Toll Free: 1.888.506.6887  
Fax: 303.730.1966  
nb-customerservice@bio-techne.com

### **Bio-Techne Canada**

21 Canmotor Ave  
Toronto, ON M8Z 4E6  
Canada  
Phone: 905.827.6400  
Toll Free: 855.668.8722  
Fax: 905.827.6402  
canada.inquires@bio-techne.com

### **Bio-Techne Ltd**

19 Barton Lane  
Abingdon Science Park  
Abingdon, OX14 3NB, United Kingdom  
Phone: (44) (0) 1235 529449  
Free Phone: 0800 37 34 15  
Fax: (44) (0) 1235 533420  
info.EMEA@bio-techne.com

### **General Contact Information**

www.novusbio.com  
Technical Support: nb-technical@bio-techne.com  
Orders: nb-customerservice@bio-techne.com  
General: novus@novusbio.com

### **Products Related to NBP3-15932-100ul**

---

HAF008	Goat anti-Rabbit IgG Secondary Antibody [HRP]
NB7160	Goat anti-Rabbit IgG (H+L) Secondary Antibody [HRP]
NBP2-24891	Rabbit IgG Isotype Control
NBP2-62623PEP	Talin2 Recombinant Protein Antigen

---

### **Limitations**

This product is for research use only and is not approved for use in humans or in clinical diagnosis. Primary Antibodies are guaranteed for 1 year from date of receipt.

For more information on our 100% guarantee, please visit [www.novusbio.com/guarantee](http://www.novusbio.com/guarantee)

Earn gift cards/discounts by submitting a review: [www.novusbio.com/reviews/submit/NBP3-15932](http://www.novusbio.com/reviews/submit/NBP3-15932)

Earn gift cards/discounts by submitting a publication using this product:  
[www.novusbio.com/publications](http://www.novusbio.com/publications)

