

# Product Datasheet

## EZH2/KMT6 Antibody (9Q2R9)

### NBP3-15783-100ul

Unit Size: 100 ul

Store at -20C. Avoid freeze-thaw cycles.

[www.novusbio.com](http://www.novusbio.com)



[technical@novusbio.com](mailto:technical@novusbio.com)

Protocols, Publications, Related Products, Reviews, Research Tools and Images at:  
[www.novusbio.com/NBP3-15783](http://www.novusbio.com/NBP3-15783)

Updated 9/9/2025 v.20.1

Earn rewards for product  
reviews and publications.

Submit a publication at [www.novusbio.com/publications](http://www.novusbio.com/publications)

Submit a review at [www.novusbio.com/reviews/destination/NBP3-15783](http://www.novusbio.com/reviews/destination/NBP3-15783)



**NBP3-15783-100ul**

EZH2/KMT6 Antibody (9Q2R9)

**Product Information**

<b>Unit Size</b>	100 ul
<b>Concentration</b>	Please see the vial label for concentration. If unlisted please contact technical services.
<b>Storage</b>	Store at -20C. Avoid freeze-thaw cycles.
<b>Clonality</b>	Monoclonal
<b>Clone</b>	9Q2R9
<b>Preservative</b>	0.02% Sodium Azide
<b>Isotype</b>	IgG
<b>Purity</b>	Affinity purified
<b>Buffer</b>	PBS (pH 7.3), 50% glycerol, 0.05% BSA

**Product Description**

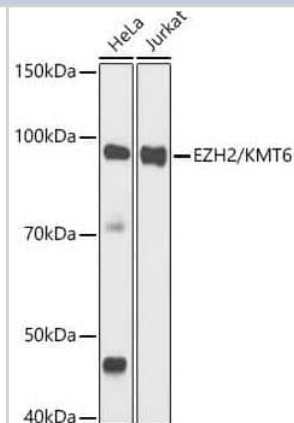
<b>Description</b>	Novus Biologicals Rabbit EZH2/KMT6 Antibody (9Q2R9) (NBP3-15783) is a recombinant monoclonal antibody validated for use in IHC and WB. All Novus Biologicals antibodies are covered by our 100% guarantee.
<b>Host</b>	Rabbit
<b>Gene ID</b>	2146
<b>Gene Symbol</b>	EZH2
<b>Species</b>	Human, Mouse
<b>Immunogen</b>	Recombinant fusion protein containing a sequence corresponding to amino acids 148-272 of human EZH2/KMT6 (Q15910). ELIKNYDGKVGHDRECGFINDEIFVELVNALGQYNDDDDDDGDDPEEREKQ KDLEDHRDDKESRPPRKFPSPDKIFEAISSMFPDKGTAEELKEKYKELTEQQLPG ALPPECTPNIDGPNKSV

**Product Application Details**

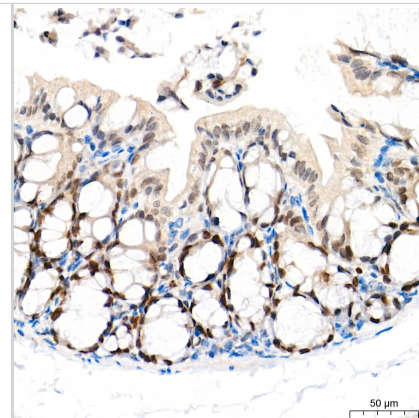
<b>Applications</b>	Western Blot, Immunohistochemistry-Paraffin, Immunohistochemistry
<b>Recommended Dilutions</b>	Western Blot 1:500 - 1:2000, Immunohistochemistry 1:50 - 1:200, Immunohistochemistry-Paraffin

**Images**

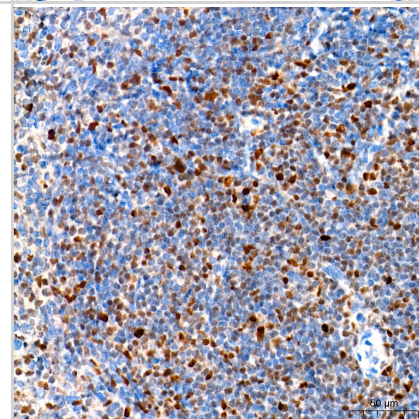
Western Blot: EZH2/KMT6 Antibody (9Q2R9) [NBP3-15783] - analysis of extracts of various cell lines, using EZH2/KMT6 antibody at 1:1000 dilution. Secondary antibody: HRP Goat Anti-Rabbit IgG (H+L) at 1:10000 dilution. Lysates/proteins: 25ug per lane. Blocking buffer: 3% nonfat dry milk in TBST. Detection: ECL Basic Kit. Exposure time: 3min.



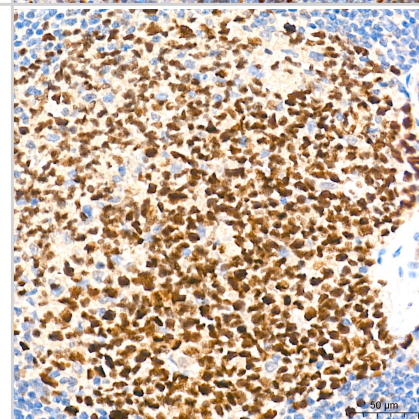
Immunohistochemistry: EZH2/KMT6 Antibody (9Q2R9) [EZH2/KMT6] - Immunohistochemistry analysis of paraffin-embedded Mouse colon tissue using EZH2/KMT6 Rabbit mAb at a dilution of 1:500 (40x lens). High pressure antigen retrieval performed with 0.01M Tris-EDTA Buffer (pH 9.0) prior to IHC staining.



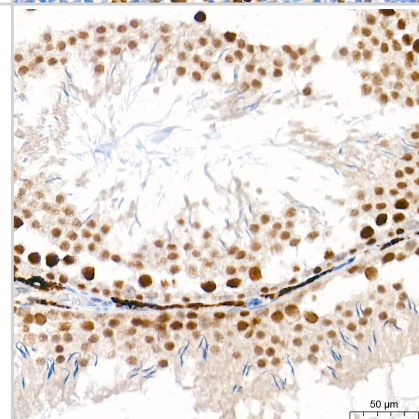
Immunohistochemistry: EZH2/KMT6 Antibody (9Q2R9) [EZH2/KMT6] - Immunohistochemistry analysis of paraffin-embedded Mouse spleen tissue using EZH2/KMT6 Rabbit mAb at a dilution of 1:500 (40x lens). High pressure antigen retrieval performed with 0.01M Tris-EDTA Buffer (pH 9.0) prior to IHC staining.



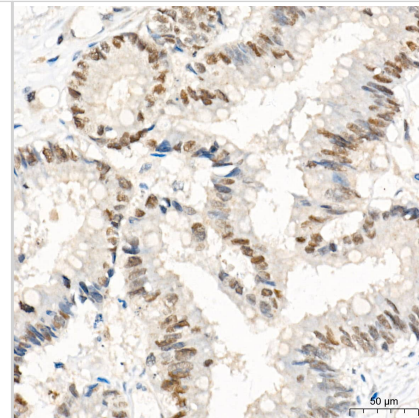
Immunohistochemistry: EZH2/KMT6 Antibody (9Q2R9) [EZH2/KMT6] - Immunohistochemistry analysis of paraffin-embedded Human tonsil tissue using EZH2/KMT6 Rabbit mAb at a dilution of 1:500 (40x lens). High pressure antigen retrieval performed with 0.01M Tris-EDTA Buffer (pH 9.0) prior to IHC staining.



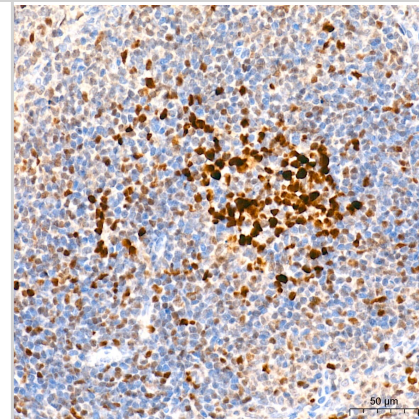
Immunohistochemistry: EZH2/KMT6 Antibody (9Q2R9) [EZH2/KMT6] - Immunohistochemistry analysis of paraffin-embedded Rat testis tissue using EZH2/KMT6 Rabbit mAb at a dilution of 1:500 (40x lens). High pressure antigen retrieval performed with 0.01M Tris-EDTA Buffer (pH 9.0) prior to IHC staining.



Immunohistochemistry: EZH2/KMT6 Antibody (9Q2R9) [EZH2/KMT6] - Immunohistochemistry analysis of paraffin-embedded Human colon carcinoma tissue using EZH2/KMT6 Rabbit mAb at a dilution of 1:500 (40x lens). High pressure antigen retrieval performed with 0.01M Tris-EDTA Buffer (pH 9.0) prior to IHC staining.



Immunohistochemistry: EZH2/KMT6 Antibody (9Q2R9) [EZH2/KMT6] - Immunohistochemistry analysis of paraffin-embedded Rat spleen tissue using EZH2/KMT6 Rabbit mAb at a dilution of 1:500 (40x lens). High pressure antigen retrieval performed with 0.01M Tris-EDTA Buffer (pH 9.0) prior to IHC staining.





### **Novus Biologicals USA**

10730 E. Briarwood Avenue  
Centennial, CO 80112  
USA  
Phone: 303.730.1950  
Toll Free: 1.888.506.6887  
Fax: 303.730.1966  
nb-customerservice@bio-techne.com

### **Bio-Techne Canada**

21 Canmotor Ave  
Toronto, ON M8Z 4E6  
Canada  
Phone: 905.827.6400  
Toll Free: 855.668.8722  
Fax: 905.827.6402  
canada.inquires@bio-techne.com

### **Bio-Techne Ltd**

19 Barton Lane  
Abingdon Science Park  
Abingdon, OX14 3NB, United Kingdom  
Phone: (44) (0) 1235 529449  
Free Phone: 0800 37 34 15  
Fax: (44) (0) 1235 533420  
info.EMEA@bio-techne.com

### **General Contact Information**

www.novusbio.com  
Technical Support: nb-technical@bio-techne.com  
Orders: nb-customerservice@bio-techne.com  
General: novus@novusbio.com

### **Products Related to NBP3-15783-100ul**

HAF008	Goat anti-Rabbit IgG Secondary Antibody [HRP]
NB7160	Goat anti-Rabbit IgG (H+L) Secondary Antibody [HRP]
NBP2-24891	Rabbit IgG Isotype Control
H00002146-P01-10ug	Recombinant Human EZH2/KMT6 GST (N-Term) Protein

### **Limitations**

This product is for research use only and is not approved for use in humans or in clinical diagnosis. Primary Antibodies are guaranteed for 1 year from date of receipt.

For more information on our 100% guarantee, please visit [www.novusbio.com/guarantee](http://www.novusbio.com/guarantee)

Earn gift cards/discounts by submitting a review: [www.novusbio.com/reviews/submit/NBP3-15783](http://www.novusbio.com/reviews/submit/NBP3-15783)

Earn gift cards/discounts by submitting a publication using this product:  
[www.novusbio.com/publications](http://www.novusbio.com/publications)

