

# Product Datasheet

## **RXR alpha/NR2B1 Antibody (6Y10M1)** **NBP3-15667-100ul**

Unit Size: 100 ul

Store at -20C. Avoid freeze-thaw cycles.

[www.novusbio.com](http://www.novusbio.com)



[technical@novusbio.com](mailto:technical@novusbio.com)

Protocols, Publications, Related Products, Reviews, Research Tools and Images at:  
[www.novusbio.com/NBP3-15667](http://www.novusbio.com/NBP3-15667)

Updated 9/9/2025 v.20.1

**Earn rewards for product  
reviews and publications.**

Submit a publication at [www.novusbio.com/publications](http://www.novusbio.com/publications)

Submit a review at [www.novusbio.com/reviews/destination/NBP3-15667](http://www.novusbio.com/reviews/destination/NBP3-15667)



**NBP3-15667-100ul**

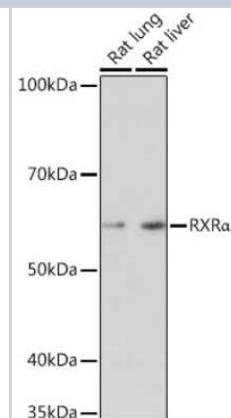
RXR alpha/NR2B1 Antibody (6Y10M1)

Product Information	
Unit Size	100 ul
Concentration	Please see the vial label for concentration. If unlisted please contact technical services.
Storage	Store at -20C. Avoid freeze-thaw cycles.
Clonality	Monoclonal
Clone	6Y10M1
Preservative	0.02% Sodium Azide
Isotype	IgG
Purity	Affinity purified
Buffer	PBS (pH 7.3), 50% glycerol, 0.05% BSA
Target Molecular Weight	51 kDa
Product Description	
Description	Novus Biologicals Rabbit RXR alpha/NR2B1 Antibody (6Y10M1) (NBP3-15667) is a recombinant monoclonal antibody validated for use in WB, ELISA, ICC/IF, IP and ChIP. All Novus Biologicals antibodies are covered by our 100% guarantee.
Host	Rabbit
Gene ID	6256
Gene Symbol	RXRA
Species	Human, Mouse, Rat
Immunogen	A synthetic peptide corresponding to a sequence within amino acids 1-100 of human RXR alpha/NR2B1 (P19793). MDTKHFLPLDFSTQVNSSLTSP TGRGSM AAPSLHPSLGPGIGSPGQLHSPISLTLSSPINGMGPPFSV ISSPMGPHSMSVPTTPTLGFSTGSPQLSSPMNP
Product Application Details	
Applications	Western Blot, ELISA, Immunocytochemistry/ Immunofluorescence, Immunoprecipitation, Chromatin Immunoprecipitation (ChIP), Chromatin Immunoprecipitation Sequencing
Recommended Dilutions	Western Blot 1:1000 - 1:2000, ELISA Recommended starting concentration is 1 µg/mL. Please optimize the concentration based on your specific assay requirements., Immunocytochemistry/ Immunofluorescence 1:100 - 1:1000, Immunoprecipitation 0.5µg-4µg antibody for 200µg-400µg extracts of whole cells, Chromatin Immunoprecipitation (ChIP) 5µg antibody for 10µg-15µg of Chromatin, Chromatin Immunoprecipitation Sequencing 1:50 - 1:100

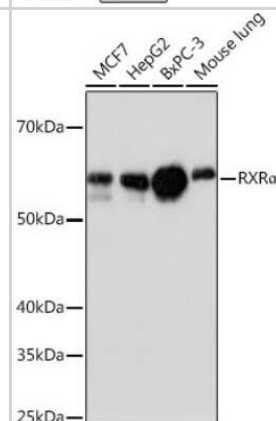


## Images

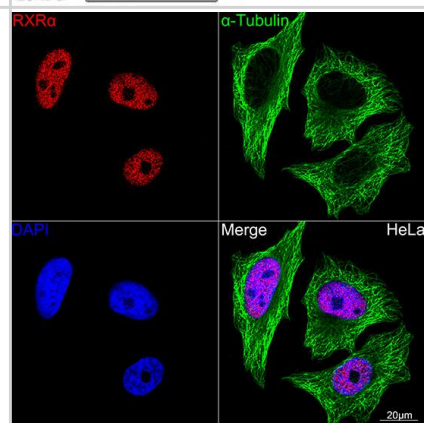
**Western Blot: RXR alpha/NR2B1 Antibody (6Y10M1) [NBP3-15667]** - Western blot analysis of extracts of various cell lines, using RXR alpha/NR2B1 antibody (NBP3-15667) at 1:1000 dilution. Secondary antibody: HRP Goat Anti-Rabbit IgG (H+L) at 1:10000 dilution. Lysates/proteins: 25ug per lane. Blocking buffer: 3% nonfat dry milk in TBST. Detection: ECL Enhanced Kit. Exposure time: 90s.



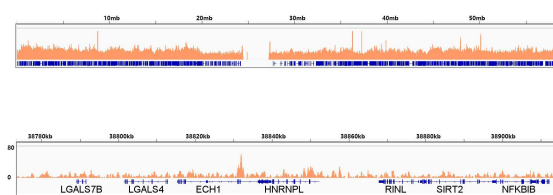
**Western Blot: RXR alpha/NR2B1 Antibody (6Y10M1) [NBP3-15667]** - Western blot analysis of extracts of various cell lines, using RXR alpha/NR2B1 antibody (NBP3-15667) at 1:1000 dilution. Secondary antibody: HRP Goat Anti-Rabbit IgG (H+L) at 1:10000 dilution. Lysates/proteins: 25ug per lane. Blocking buffer: 3% nonfat dry milk in TBST. Detection: ECL Basic Kit. Exposure time: 3min.



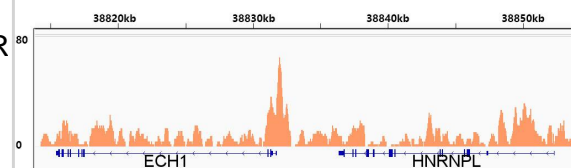
**Immunocytochemistry/ Immunofluorescence: RXR alpha/NR2B1 Antibody (6Y10M1) [RXR alpha/NR2B1]** - Confocal imaging of HeLa cells using RXR alpha/NR2B1 Rabbit mAb. The cells were counterstained with alpha-Tubulin Mouse mAb (Green). DAPI was used for nuclear staining (blue). Objective: 100x.



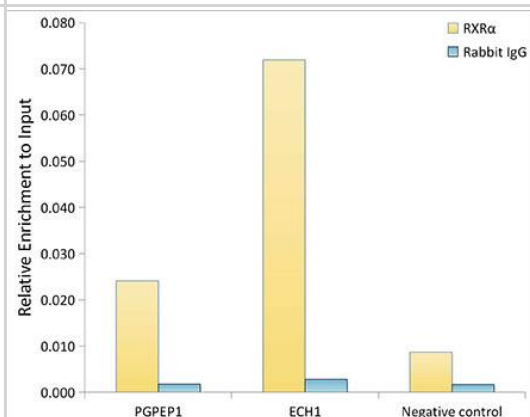
**Chromatin Immunoprecipitation: RXR alpha/NR2B1 Antibody (6Y10M1) [RXR alpha/NR2B1]** - Chromatin immunoprecipitation was performed with 25 ug of cross-linked chromatin from HepG2 cells using 5 ug of RXR alpha/NR2B1 Rabbit mAb. DNA libraries were prepared using Scale ssDNA-seq Lib Prep Kit for Illumina V2. The ChIP sequencing results indicate the enrichment pattern of RXR alpha/NR2B1 across chromosome 19 (upper panel) and the genomic region encompassing ECH1, a representative gene enriched in RXR alpha/NR2B1 (lower panel).



Chromatin Immunoprecipitation: RXR alpha/NR2B1 Antibody (6Y10M1) [RXR alpha/NR2B1] - Chromatin immunoprecipitation was performed with 25 ug of cross-linked chromatin from HepG2 cells using 5 ug of RXR alpha/NR2B1 Rabbit mAb . DNA libraries were prepared using Scale ssDNA-seq Lib Prep Kit for Illumina V2 . The ChIP sequencing results indicate the enrichment pattern of RXR alpha/NR2B1 in the representative genomic region surrounding ECH1 gene.



Chromatin Immunoprecipitation: RXR alpha/NR2B1 Antibody (6Y10M1) [RXR alpha/NR2B1] - Chromatin immunoprecipitation analysis of extracts from HepG2 cells, using RXR alpha/NR2B1 antibody and rabbit IgG. The amount of immunoprecipitated DNA was checked by quantitative PCR. Histogram was constructed by the ratios of the immunoprecipitated DNA to the input.





### **Novus Biologicals USA**

10730 E. Briarwood Avenue  
Centennial, CO 80112  
USA  
Phone: 303.730.1950  
Toll Free: 1.888.506.6887  
Fax: 303.730.1966  
nb-customerservice@bio-techne.com

### **Bio-Techne Canada**

21 Canmotor Ave  
Toronto, ON M8Z 4E6  
Canada  
Phone: 905.827.6400  
Toll Free: 855.668.8722  
Fax: 905.827.6402  
canada.inquires@bio-techne.com

### **Bio-Techne Ltd**

19 Barton Lane  
Abingdon Science Park  
Abingdon, OX14 3NB, United Kingdom  
Phone: (44) (0) 1235 529449  
Free Phone: 0800 37 34 15  
Fax: (44) (0) 1235 533420  
info.EMEA@bio-techne.com

### **General Contact Information**

[www.novusbio.com](http://www.novusbio.com)  
Technical Support: nb-technical@bio-techne.com  
Orders: nb-customerservice@bio-techne.com  
General: novus@novusbio.com

### **Products Related to NBP3-15667-100ul**

---

HAF008	Goat anti-Rabbit IgG Secondary Antibody [HRP]
NB7160	Goat anti-Rabbit IgG (H+L) Secondary Antibody [HRP]
NBP2-24891	Rabbit IgG Isotype Control
NBC1-18416	Recombinant Human RXR alpha/NR2B1 Protein

---

### **Limitations**

This product is for research use only and is not approved for use in humans or in clinical diagnosis. Primary Antibodies are guaranteed for 1 year from date of receipt.

For more information on our 100% guarantee, please visit [www.novusbio.com/guarantee](http://www.novusbio.com/guarantee)

Earn gift cards/discounts by submitting a review: [www.novusbio.com/reviews/submit/NBP3-15667](http://www.novusbio.com/reviews/submit/NBP3-15667)

Earn gift cards/discounts by submitting a publication using this product:  
[www.novusbio.com/publications](http://www.novusbio.com/publications)

