

Product Datasheet

Sodium Potassium ATPase Alpha 1 Antibody (3L6F0) NBP3-15427-100ul

Unit Size: 100 ul

Store at -20C. Avoid freeze-thaw cycles.

www.novusbio.com



technical@novusbio.com

Protocols, Publications, Related Products, Reviews, Research Tools and Images at:
www.novusbio.com/NBP3-15427

Updated 1/5/2025 v.20.1

Earn rewards for product
reviews and publications.

Submit a publication at www.novusbio.com/publications

Submit a review at www.novusbio.com/reviews/destination/NBP3-15427



NBP3-15427-100ul**Sodium Potassium ATPase Alpha 1 Antibody (3L6F0)**

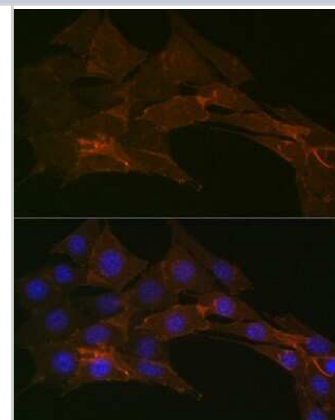
Product Information	
Unit Size	100 ul
Concentration	Please see the vial label for concentration. If unlisted please contact technical services.
Storage	Store at -20C. Avoid freeze-thaw cycles.
Clonality	Monoclonal
Clone	3L6F0
Preservative	0.02% Sodium Azide
Isotype	IgG
Purity	Affinity purified
Buffer	PBS (pH 7.3), 50% glycerol, 0.05% BSA
Target Molecular Weight	113 kDa

Product Description	
Host	Rabbit
Gene ID	476
Gene Symbol	ATP1A1
Species	Human, Mouse, Rat
Immunogen	A synthetic peptide corresponding to a sequence within amino acids 1-100 of human Sodium Potassium ATPase Alpha 1 (P05023). MGKGVGRDKYEPAAVSEQGDKKGKGGKDRDMDELKKEVSMDDHKLSLDEL HRKYGTDLRGLTSARAAEILARDGPNALTPPPTTPEWIKFCRQLFGGF

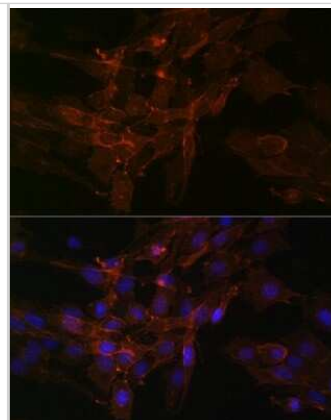
Product Application Details	
Applications	Western Blot, Immunocytochemistry/ Immunofluorescence, Immunohistochemistry, Immunohistochemistry-Paraffin
Recommended Dilutions	Western Blot 1:10000 - 1:120000, Immunohistochemistry 1:100 - 1:500, Immunocytochemistry/ Immunofluorescence 1:50 - 1:200, Immunohistochemistry-Paraffin 1:100 - 1:500

Images

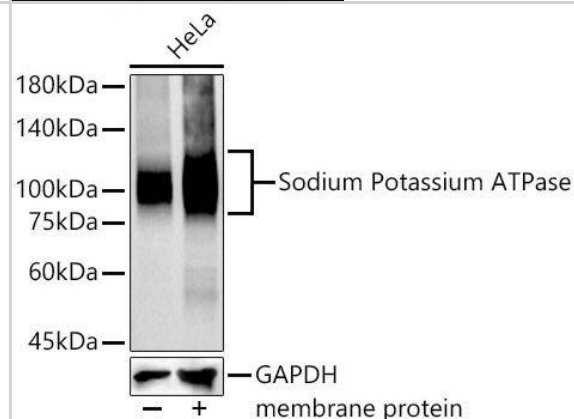
Immunocytochemistry/Immunofluorescence: Sodium Potassium ATPase Alpha 1 Antibody (3L6F0) [NBP3-15427] - Immunofluorescence analysis of NIH-3T3 cells using Sodium Potassium ATPase Alpha 1 Rabbit mAb (NBP3-15427) at dilution of 1:100 (40x lens). Blue: DAPI for nuclear staining.



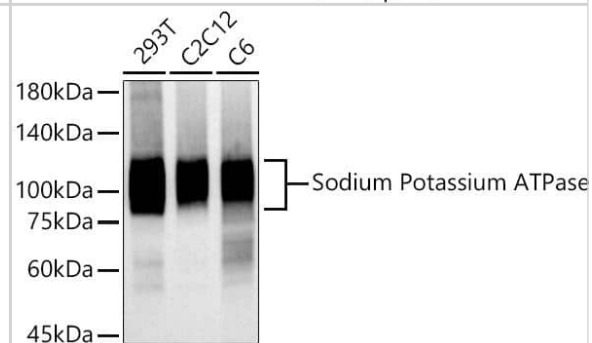
Immunocytochemistry/Immunofluorescence: Sodium Potassium ATPase Alpha 1 Antibody (3L6F0) [NBP3-15427] - Immunofluorescence analysis of C6 cells using Sodium Potassium ATPase Alpha 1 Rabbit mAb (NBP3-15427) at dilution of 1:100 (40x lens). Blue: DAPI for nuclear staining.



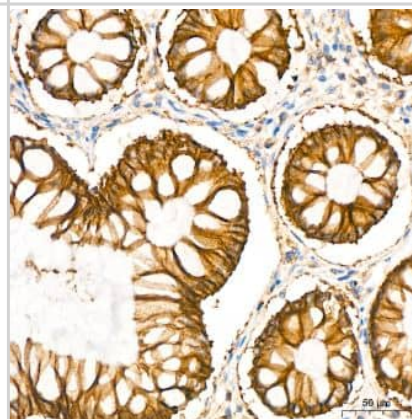
Western Blot: Sodium Potassium ATPase Alpha 1 Antibody (3L6F0) [NBP3-15427] - Analysis of extracts from HeLa cells, using Na⁺/K⁺-ATPase Rabbit mAb at 1:50000 dilution. Membrane protein extract isolated from HeLa cells. Secondary antibody: HRP Goat Anti-Rabbit IgG (H+L) at 1:10000 dilution. Lysates/proteins: 25ug per lane. Blocking buffer: 3% nonfat dry milk in TBST. Detection: ECL Basic Kit. Exposure time: 30s.



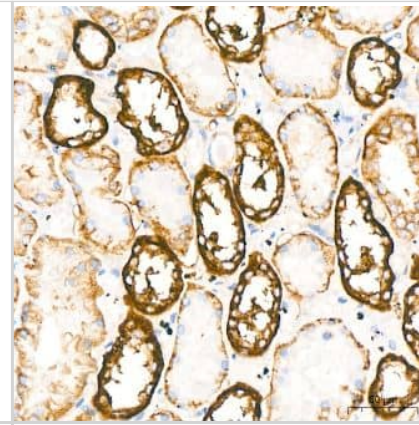
Western Blot: Sodium Potassium ATPase Alpha 1 Antibody (3L6F0) [NBP3-15427] - Analysis of various lysates, using Na⁺/K⁺-ATPase Rabbit mAb at 1:50000 dilution. Membrane protein extract isolated from HeLa cells. Secondary antibody: HRP Goat Anti-Rabbit IgG (H+L) at 1:10000 dilution. Lysates/proteins: 25ug per lane. Blocking buffer: 3% nonfat dry milk in TBST. Detection: ECL Basic Kit. Exposure time: 30s.



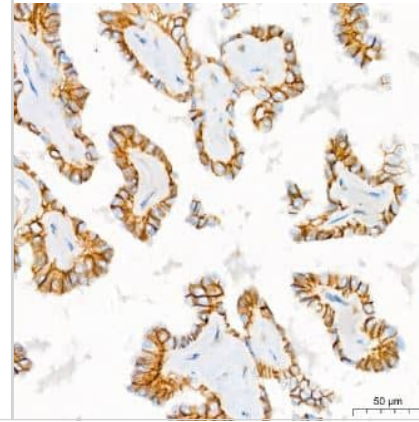
Immunohistochemistry-Paraffin: Sodium Potassium ATPase Alpha 1 Antibody (3L6F0) [NBP3-15427] - Analysis of Na⁺/K⁺-ATPase in paraffin-embedded human colon using Na⁺/K⁺-ATPase Rabbit mAb at dilution of 1:400 (40x lens). Perform high pressure antigen retrieval with 10 mM citrate buffer pH 6.0 before commencing with IHC staining protocol.



Immunohistochemistry-Paraffin: Sodium Potassium ATPase Alpha 1 Antibody (3L6F0) [NBP3-15427] - Analysis of Na⁺/K⁺-ATPase in paraffin-embedded human kidney using Na⁺/K⁺-ATPase Rabbit mAb at dilution of 1:400 (40x lens). Perform high pressure antigen retrieval with 10 mM citrate buffer pH 6.0 before commencing with IHC staining protocol.



Immunohistochemistry-Paraffin: Sodium Potassium ATPase Alpha 1 Antibody (3L6F0) [NBP3-15427] - Analysis of Na⁺/K⁺-ATPase in paraffin-embedded human thyroid cancer using Na⁺/K⁺-ATPase Rabbit mAb at dilution of 1:400 (40x lens). Perform high pressure antigen retrieval with 10 mM citrate buffer pH 6.0 before commencing with IHC staining protocol.





Novus Biologicals USA

10730 E. Briarwood Avenue
Centennial, CO 80112
USA
Phone: 303.730.1950
Toll Free: 1.888.506.6887
Fax: 303.730.1966
nb-customerservice@bio-techne.com

Bio-Techne Canada

21 Canmotor Ave
Toronto, ON M8Z 4E6
Canada
Phone: 905.827.6400
Toll Free: 855.668.8722
Fax: 905.827.6402
canada.inquires@bio-techne.com

Bio-Techne Ltd

19 Barton Lane
Abingdon Science Park
Abingdon, OX14 3NB, United Kingdom
Phone: (44) (0) 1235 529449
Free Phone: 0800 37 34 15
Fax: (44) (0) 1235 533420
info.EMEA@bio-techne.com

General Contact Information

www.novusbio.com
Technical Support: nb-technical@bio-techne.com
Orders: nb-customerservice@bio-techne.com
General: novus@novusbio.com

Products Related to NBP3-15427-100ul

HAF008	Goat anti-Rabbit IgG Secondary Antibody [HRP]
NB7160	Goat anti-Rabbit IgG (H+L) Secondary Antibody [HRP]
NBP2-24891	Rabbit IgG Isotype Control
NBL1-07807	Sodium Potassium ATPase Alpha 1 Overexpression Lysate

Limitations

This product is for research use only and is not approved for use in humans or in clinical diagnosis. Primary Antibodies are guaranteed for 1 year from date of receipt.

For more information on our 100% guarantee, please visit www.novusbio.com/guarantee

Earn gift cards/discounts by submitting a review: www.novusbio.com/reviews/submit/NBP3-15427

Earn gift cards/discounts by submitting a publication using this product:
www.novusbio.com/publications

