

Product Datasheet

Lysozyme Antibody (2Y5E4)

NBP3-15338-100ul

Unit Size: 100 ul

Store at -20C. Avoid freeze-thaw cycles.

www.novusbio.com



technical@novusbio.com

Protocols, Publications, Related Products, Reviews, Research Tools and Images at:
www.novusbio.com/NBP3-15338

Updated 9/9/2025 v.20.1

Earn rewards for product
reviews and publications.

Submit a publication at www.novusbio.com/publications

Submit a review at www.novusbio.com/reviews/destination/NBP3-15338



NBP3-15338-100ul

Lysozyme Antibody (2Y5E4)

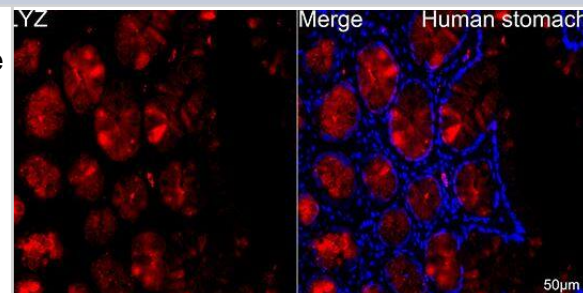
Product Information	
Unit Size	100 ul
Concentration	Please see the vial label for concentration. If unlisted please contact technical services.
Storage	Store at -20C. Avoid freeze-thaw cycles.
Clonality	Monoclonal
Clone	2Y5E4
Preservative	0.05% Proclin 300
Isotype	IgG
Purity	Affinity purified
Buffer	PBS (pH 7.3), 50% glycerol, 0.05% BSA
Target Molecular Weight	17 kDa

Product Description	
Description	Novus Biologicals Rabbit Lysozyme Antibody (2Y5E4) (NBP3-15338) is a recombinant monoclonal antibody validated for use in IHC, WB, ELISA and ICC/IF. All Novus Biologicals antibodies are covered by our 100% guarantee.
Host	Rabbit
Gene ID	4069
Gene Symbol	LYZ
Species	Human, Mouse, Rat
Immunogen	A synthetic peptide corresponding to a sequence within amino acids 1-100 of human Lysozyme (NP_000230.1). MKALIVLGLVLLSVTVQGKVFERCELARTLKRLGMDGYRGISLANWMCLAKWE SGYNTRATNYNAGDRSTDYGIFQINSRYWCNDGKTPGAVNACHLSCS

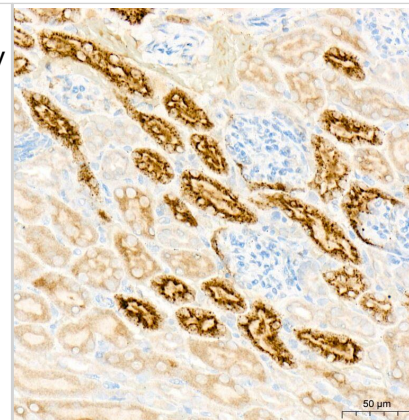
Product Application Details	
Applications	Western Blot, Immunohistochemistry-Paraffin, ELISA, Immunocytochemistry/Immunofluorescence, Immunohistochemistry
Recommended Dilutions	Western Blot 1:3000 - 1:20000, ELISA Recommended starting concentration is 1 ug/mL, Immunohistochemistry 1:1000 - 1:10000, Immunocytochemistry/Immunofluorescence 1:200 - 1:2000, Immunohistochemistry-Paraffin 1:1000 - 1:10000

Images

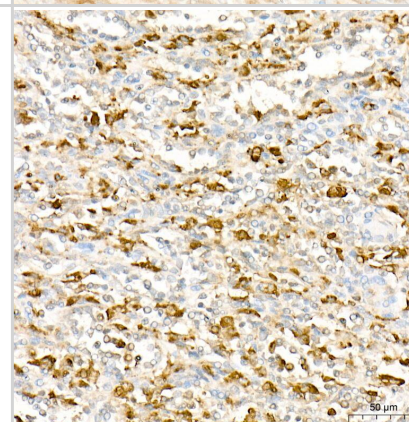
Immunohistochemistry-Paraffin: Lysozyme Antibody (ARQ4974) [NBP3-15338] -Analysis of paraffin-embedded Human stomach using Lysozyme (LYZ) Rabbit mAb at a dilution of 1:400 (40x lens). Secondary antibody: Cy3 Goat Anti-Rabbit IgG (H+L) at 1:500 dilution. Blue: DAPI for nuclear staining.



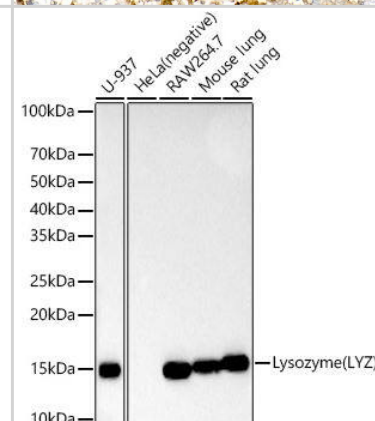
Immunohistochemistry-Paraffin: Lysozyme Antibody (ARQ4974) [NBP3-15338] -Analysis of Lysozyme (LYZ) in paraffin-embedded mouse kidney tissue using Lysozyme (LYZ) Rabbit mAb at a dilution of 1:900 (40x lens). Perform high pressure antigen retrieval with 10 mM citrate buffer pH 6.0 before commencing with IHC staining protocol.



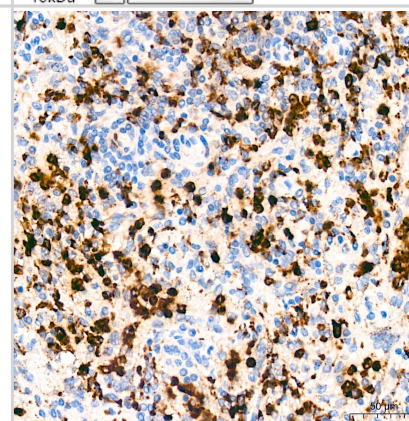
Immunohistochemistry-Paraffin: Lysozyme Antibody (ARQ4974) [NBP3-15338] -Analysis of Lysozyme (LYZ) in paraffin-embedded human spleen tissue using Lysozyme (LYZ) Rabbit mAb at a dilution of 1:900 (40x lens). Perform high pressure antigen retrieval with 10 mM citrate buffer pH 6.0 before commencing with IHC staining protocol.



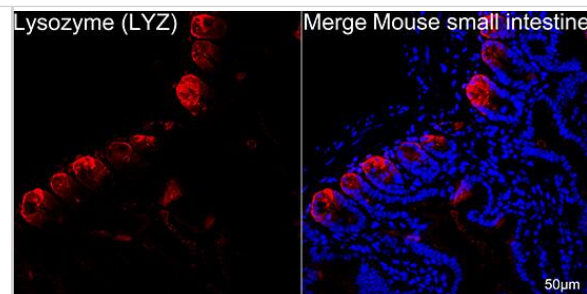
Western Blot: Lysozyme Antibody (ARQ4974) [NBP3-15338] - analysis of various lysates, using Lysozyme(LYZ) antibody at 1:20000 dilution. Secondary antibody: HRP Goat Anti-Rabbit IgG (H+L) at 1:10000 dilution. Lysates/proteins: 25ug per lane. Blocking buffer: 3% nonfat dry milk in TBST. Detection: ECL Basic Kit. Exposure time: 90s.



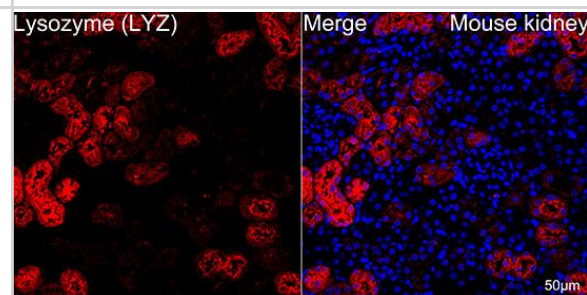
Immunohistochemistry: Lysozyme Antibody (2Y5E4) [Lysozyme] - Immunohistochemistry analysis of paraffin-embedded Human spleen tissue using Lysozyme Rabbit mAb at a dilution of 1:4000 (40x lens). High pressure antigen retrieval was performed with 0.01 M citrate buffer (pH 6.0) prior to IHC staining.



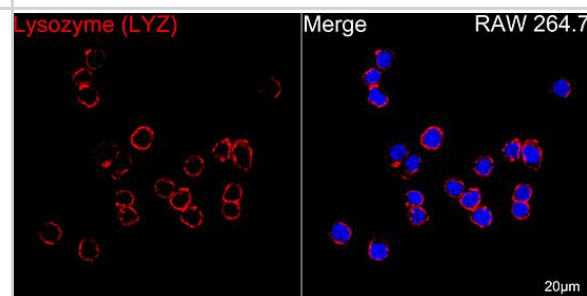
Immunocytochemistry/ Immunofluorescence: Lysozyme Antibody (2Y5E4) [Lysozyme] - Confocal imaging of paraffin-embedded Mouse small intestine tissue using Lysozyme Rabbit mAb followed by a further incubation with Cy3 Goat Anti-Rabbit IgG (H+L) . DAPI was used for nuclear staining (Blue). High pressure antigen retrieval performed with 0.01M Citrate Buffer(pH 6.0) prior to IF staining. Objective: 40x.



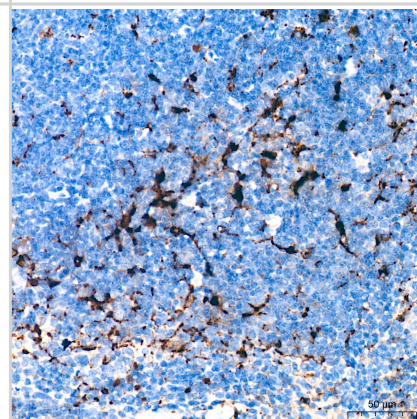
Immunocytochemistry/ Immunofluorescence: Lysozyme Antibody (2Y5E4) [Lysozyme] - Confocal imaging of paraffin-embedded Mouse kidney tissue using Lysozyme Rabbit mAb followed by a further incubation with Cy3 Goat Anti-Rabbit IgG (H+L) . DAPI was used for nuclear staining (Blue). High pressure antigen retrieval performed with 0.01M Citrate Buffer(pH 6.0) prior to IF staining. Objective: 40x.



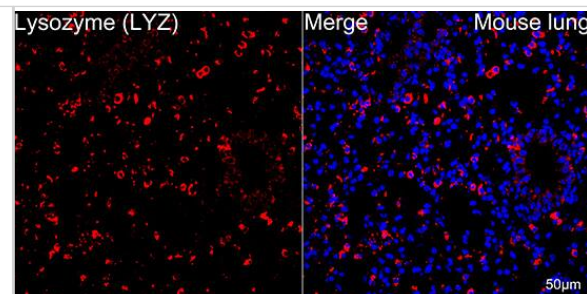
Immunocytochemistry/ Immunofluorescence: Lysozyme Antibody (2Y5E4) [Lysozyme] - Confocal imaging of RAW 264.7 cells using Lysozyme Rabbit mAb followed by a further incubation with Cy3 Goat Anti-Rabbit IgG (H+L) . DAPI was used for nuclear staining (Blue). Objective: 100x.



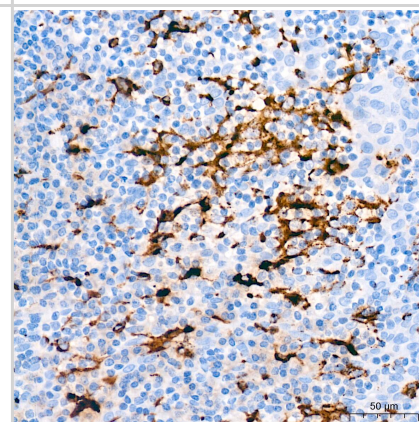
Immunohistochemistry: Lysozyme Antibody (2Y5E4) [Lysozyme] - Immunohistochemistry analysis of paraffin-embedded Mouse spleen tissue using Lysozyme Rabbit mAb at a dilution of 1:4000 (40x lens). High pressure antigen retrieval was performed with 0.01 M citrate buffer (pH 6.0) prior to IHC staining.



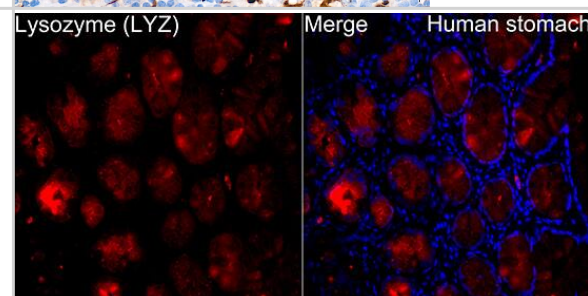
Immunocytochemistry/ Immunofluorescence: Lysozyme Antibody (2Y5E4) [Lysozyme] - Confocal imaging of paraffin-embedded Mouse lung tissue using Lysozyme Rabbit mAb followed by a further incubation with Cy3 Goat Anti-Rabbit IgG (H+L) . DAPI was used for nuclear staining (Blue). High pressure antigen retrieval performed with 0.01M Citrate Buffer(pH 6.0) prior to IF staining. Objective: 40x.



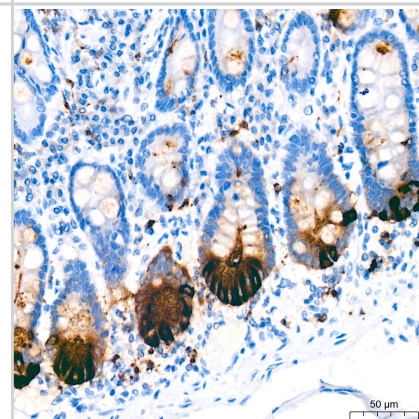
Immunohistochemistry: Lysozyme Antibody (2Y5E4) [Lysozyme] - Immunohistochemistry analysis of paraffin-embedded Human tonsil tissue using Lysozyme Rabbit mAb at a dilution of 1:4000 (40x lens). High pressure antigen retrieval was performed with 0.01 M citrate buffer (pH 6.0) prior to IHC staining.



Immunocytochemistry/ Immunofluorescence: Lysozyme Antibody (2Y5E4) [Lysozyme] - Immunofluorescence analysis of paraffin-embedded Human stomach tissue using Lysozyme Rabbit mAb at a dilution of 1:400 (40x lens). Secondary antibody: Cy3-conjugated Goat anti-Rabbit IgG (H+L) at 1:500 dilution. Blue: DAPI for nuclear staining.



Immunohistochemistry: Lysozyme Antibody (2Y5E4) [Lysozyme] - Immunohistochemistry analysis of paraffin-embedded Human colon tissue using Lysozyme Rabbit mAb at a dilution of 1:4000 (40x lens). High pressure antigen retrieval was performed with 0.01 M citrate buffer (pH 6.0) prior to IHC staining.





Novus Biologicals USA

10730 E. Briarwood Avenue
Centennial, CO 80112
USA
Phone: 303.730.1950
Toll Free: 1.888.506.6887
Fax: 303.730.1966
nb-customerservice@bio-techne.com

Bio-Techne Canada

21 Canmotor Ave
Toronto, ON M8Z 4E6
Canada
Phone: 905.827.6400
Toll Free: 855.668.8722
Fax: 905.827.6402
canada.inquires@bio-techne.com

Bio-Techne Ltd

19 Barton Lane
Abingdon Science Park
Abingdon, OX14 3NB, United Kingdom
Phone: (44) (0) 1235 529449
Free Phone: 0800 37 34 15
Fax: (44) (0) 1235 533420
info.EMEA@bio-techne.com

General Contact Information

www.novusbio.com
Technical Support: nb-technical@bio-
techne.com
Orders: nb-customerservice@bio-techne.com
General: novus@novusbio.com

Products Related to NBP3-15338-100ul

HAF008	Goat anti-Rabbit IgG Secondary Antibody [HRP]
NB7160	Goat anti-Rabbit IgG (H+L) Secondary Antibody [HRP]
NBP2-24891	Rabbit IgG Isotype Control
P5238	Lysozyme Native Protein

Limitations

This product is for research use only and is not approved for use in humans or in clinical diagnosis. Primary Antibodies are guaranteed for 1 year from date of receipt.

For more information on our 100% guarantee, please visit www.novusbio.com/guarantee

Earn gift cards/discounts by submitting a review: www.novusbio.com/reviews/submit/NBP3-15338

Earn gift cards/discounts by submitting a publication using this product:
www.novusbio.com/publications

