

Product Datasheet

DOT1L Antibody (3B6) - BSA Free NBP3-15150

Unit Size: 100 ul

Store at -20 to -70C. Avoid freeze-thaw cycles.

www.novusbio.com



technical@novusbio.com

Protocols, Publications, Related Products, Reviews, Research Tools and Images at:
www.novusbio.com/NBP3-15150

Updated 9/9/2025 v.20.1

Earn rewards for product
reviews and publications.

Submit a publication at www.novusbio.com/publications

Submit a review at www.novusbio.com/reviews/destination/NBP3-15150



NBP3-15150

DOT1L Antibody (3B6) - BSA Free

| Product Information | |
|-----------------------------|---|
| Unit Size | 100 ul |
| Concentration | Please see the vial label for concentration. If unlisted please contact technical services. |
| Storage | Store at -20 to -70C. Avoid freeze-thaw cycles. |
| Clonality | Monoclonal |
| Clone | 3B6 |
| Preservative | 0.02% Sodium Azide |
| Isotype | IgG |
| Purity | Affinity purified |
| Buffer | PBS, pH 7.4, 150mM NaCl, and 50% glycerol |
| Product Description | |
| Description | Novus Biologicals Rabbit DOT1L Antibody (3B6) - BSA Free (NBP3-15150) is a recombinant monoclonal antibody validated for use in WB and ELISA. All Novus Biologicals antibodies are covered by our 100% guarantee. |
| Host | Rabbit |
| Gene ID | 84444 |
| Gene Symbol | DOT1L |
| Species | Human |
| Immunogen | A synthesized peptide derived from human DOT1L. UniProt ID (Q8TEK3). |
| Product Application Details | |
| Applications | Western Blot, ELISA |
| Recommended Dilutions | Western Blot 1:500-1:5000, ELISA |



Images

Western Blot: DOT1L Antibody (3B6) [NBP3-15150] - Positive WB detected in: A549 whole cell lysate, HeLa whole cell lysate, 293T whole cell lysate

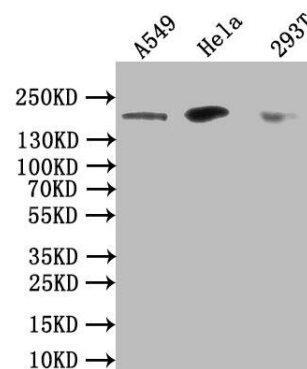
All lanes: DOT1L antibody at 1:1000

Secondary

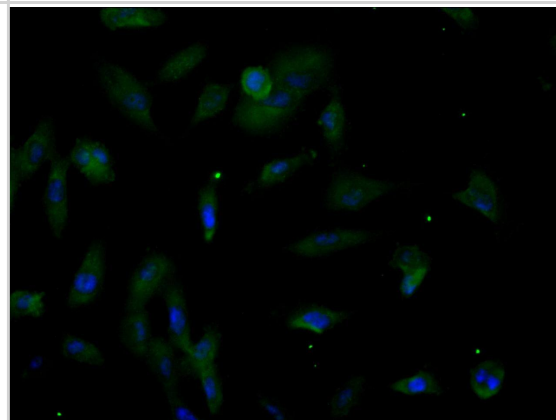
Goat polyclonal to rabbit IgG at 1/50000 dilution

Predicted band size: 165 kDa

Observed band size: 165 kDa



Immunocytochemistry/Immunofluorescence: DOT1L Antibody (3B6) [NBP3-15150] - Staining of HeLa cell with NBP3-15150 at 1:30, counter-stained with DAPI. The cells were fixed in 4% formaldehyde and blocked in 10% normal Goat Serum. The cells were then incubated with the antibody overnight at 4C. The secondary antibody was Alexa Fluor 488-conjugated AffiniPure Goat Anti-Rabbit IgG (H+L).





Novus Biologicals USA

10730 E. Briarwood Avenue
Centennial, CO 80112
USA
Phone: 303.730.1950
Toll Free: 1.888.506.6887
Fax: 303.730.1966
nb-customerservice@bio-techne.com

Bio-Techne Canada

21 Canmotor Ave
Toronto, ON M8Z 4E6
Canada
Phone: 905.827.6400
Toll Free: 855.668.8722
Fax: 905.827.6402
canada.inquires@bio-techne.com

Bio-Techne Ltd

19 Barton Lane
Abingdon Science Park
Abingdon, OX14 3NB, United Kingdom
Phone: (44) (0) 1235 529449
Free Phone: 0800 37 34 15
Fax: (44) (0) 1235 533420
info.EMEA@bio-techne.com

General Contact Information

www.novusbio.com
Technical Support: nb-technical@bio-techne.com
Orders: nb-customerservice@bio-techne.com
General: novus@novusbio.com

Products Related to NBP3-15150

| | |
|---------------|---|
| HAF008 | Goat anti-Rabbit IgG Secondary Antibody [HRP] |
| NB7160 | Goat anti-Rabbit IgG (H+L) Secondary Antibody [HRP] |
| NBP2-24891 | Rabbit IgG Isotype Control |
| NBP2-56641PEP | DOT1L Recombinant Protein Antigen |

Limitations

This product is for research use only and is not approved for use in humans or in clinical diagnosis. Primary Antibodies are guaranteed for 1 year from date of receipt.

For more information on our 100% guarantee, please visit www.novusbio.com/guarantee

Earn gift cards/discounts by submitting a review: www.novusbio.com/reviews/submit/NBP3-15150

Earn gift cards/discounts by submitting a publication using this product:
www.novusbio.com/publications

