

# Product Datasheet

## Recombinant Human ATPase Na<sup>+</sup>/K<sup>+</sup> beta 2 His Protein NBP3-15116-10ug

Unit Size: 10 ug

Store at 4C short term. Aliquot and store at -20C long term. Avoid freeze-thaw cycles.

[www.novusbio.com](http://www.novusbio.com)



[technical@novusbio.com](mailto:technical@novusbio.com)

Protocols, Publications, Related Products, Reviews, Research Tools and Images at:  
[www.novusbio.com/NBP3-15116](http://www.novusbio.com/NBP3-15116)

Updated 4/25/2023 v.20.1

Earn rewards for product  
reviews and publications.

Submit a publication at [www.novusbio.com/publications](http://www.novusbio.com/publications)

Submit a review at [www.novusbio.com/reviews/destination/NBP3-15116](http://www.novusbio.com/reviews/destination/NBP3-15116)

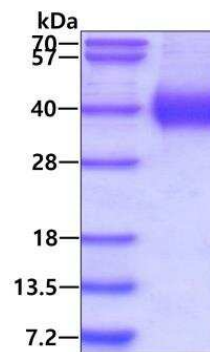


**NBP3-15116-10ug**Recombinant Human ATPase Na<sup>+</sup>/K<sup>+</sup> beta 2 His Protein

Product Information	
Unit Size	10 ug
Concentration	0.5 mg/ml
Storage	Store at 4C short term. Aliquot and store at -20C long term. Avoid freeze-thaw cycles.
Preservative	No Preservative
Purity	>90%, by SDS-PAGE
Buffer	PBS (pH 7.4), 10% glycerol
Target Molecular Weight	26.4 kDa
Product Description	
Description	<p>A recombinant protein with a His-tag corresponding to amino acids 68-290 of Human ATPase Na<sup>+</sup>/K<sup>+</sup> beta 2</p> <p><b>Source:</b> <i>Baculovirus</i></p> <p><b>Accession Number:</b> <i>NP_001669</i></p> <p><b>Uniprot ID:</b> <i>P14415</i></p> <p><b>Amino Acid Sequence:</b> <i>DHTPKYQ DRLATPGLMI RPKTENLDVI VNVSDTESWD QHVQKLNKFL EPYNDSIQAQ KNDVCRPGRY YEQPDNGVLN YPKRACQFNR TQLGNCSGIG DSTHYGYSTG QPCVFIKMNR VINFYAGANQ SMNVTCAKGR DEDAENLGNF VMFPANGNID LMYFPYYGKK FHVNYTQPLV AVKFLNVTPN VEVNVECRIN AANIATDDER DKFAGRVAFK LRINKT</i></p>
Gene ID	482
Gene Symbol	ATP1B2
Species	Human
Details of Functionality	Specific activity is > 3,000 pmol/min/ug, and is defined as the amount of enzyme that hydrolyze 1.0 pmole of Adenosine 5-triphosphate to phosphate per minute per minute at pH 7.5 at 25C.
Endotoxin Note	< 1 EU per 1ug of protein (determined by LAL method)
Product Application Details	
Applications	SDS-Page, Enzyme Activity
Recommended Dilutions	SDS-Page, Enzyme Activity

**Images**

SDS-Page: Recombinant Human ATPase Na<sup>+</sup>/K<sup>+</sup> beta 2 His Protein [NBP3-15116] - 3ug by SDS-PAGE under reducing condition and visualized by coomassie blue stain





### **Novus Biologicals USA**

10730 E. Briarwood Avenue  
Centennial, CO 80112  
USA  
Phone: 303.730.1950  
Toll Free: 1.888.506.6887  
Fax: 303.730.1966  
nb-customerservice@bio-techne.com

### **Bio-Techne Canada**

21 Canmotor Ave  
Toronto, ON M8Z 4E6  
Canada  
Phone: 905.827.6400  
Toll Free: 855.668.8722  
Fax: 905.827.6402  
canada.inquires@bio-techne.com

### **Bio-Techne Ltd**

19 Barton Lane  
Abingdon Science Park  
Abingdon, OX14 3NB, United Kingdom  
Phone: (44) (0) 1235 529449  
Free Phone: 0800 37 34 15  
Fax: (44) (0) 1235 533420  
info.EMEA@bio-techne.com

### **General Contact Information**

www.novusbio.com  
Technical Support: nb-technical@bio-techne.com  
Orders: nb-customerservice@bio-techne.com  
General: novus@novusbio.com

### **Products Related to NBP3-15116-10ug**

---

NBP2-22701	Recombinant Human ATPase Na <sup>+</sup> /K <sup>+</sup> beta 2 His Protein
M6000B-1	IL-6 [HRP]
NBP1-90174	ATPase Na <sup>+</sup> /K <sup>+</sup> beta 2 Antibody - BSA Free
201-LB-005	IL-1 beta/IL-1F2 [Unconjugated]

---

### **Limitations**

This product is for research use only and is not approved for use in humans or in clinical diagnosis. Peptides and proteins are guaranteed for 3 months from date of receipt.

For more information on our 100% guarantee, please visit [www.novusbio.com/guarantee](http://www.novusbio.com/guarantee)

Earn gift cards/discounts by submitting a review: [www.novusbio.com/reviews/submit/NBP3-15116](http://www.novusbio.com/reviews/submit/NBP3-15116)

Earn gift cards/discounts by submitting a publication using this product:  
[www.novusbio.com/publications](http://www.novusbio.com/publications)

