

# Product Datasheet

## Recombinant Mouse beta-Synuclein Active, Monomer Protein

**NBP3-14776-100ug**

Unit Size: 100 ug

Store at -80C. Avoid freeze-thaw cycles.

[www.novusbio.com](http://www.novusbio.com)



[technical@novusbio.com](mailto:technical@novusbio.com)

Protocols, Publications, Related Products, Reviews, Research Tools and Images at:  
[www.novusbio.com/NBP3-14776](http://www.novusbio.com/NBP3-14776)

Updated 1/15/2025 v.20.1

Earn rewards for product reviews and publications.

Submit a publication at [www.novusbio.com/publications](http://www.novusbio.com/publications)

Submit a review at [www.novusbio.com/reviews/destination/NBP3-14776](http://www.novusbio.com/reviews/destination/NBP3-14776)



**NBP3-14776-100ug**

Recombinant Mouse beta-Synuclein Active, Monomer Protein

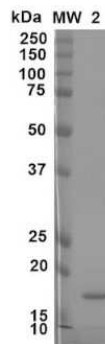
Product Information	
Unit Size	100 ug
Concentration	Please see the vial label for concentration. If unlisted please contact technical services.
Storage	Store at -80C. Avoid freeze-thaw cycles.
Preservative	No Preservative
Purity	>95%, by SDS-PAGE
Buffer	PBS pH 7.4

Product Description	
Description	A full length recombinant protein of Mouse beta-Synuclein  <b>Source:</b> <i>E. coli</i> <b>Uniprot ID:</b> Q91ZZ3
Gene ID	6620
Gene Symbol	SNCB
Species	Mouse
Preparation Method	Ion-exchange Purified
Notes	Please note that the 200ug and 500ug sizes are sent in 2x100ug and 5x100ug vials, respectively

Product Application Details	
Applications	Western Blot, SDS-Page
Recommended Dilutions	Western Blot, SDS-Page

**Images**

SDS-Page: Recombinant Mouse beta-Synuclein Active, Monomer Protein [NBP3-14776] - Coomassie gel stain of Mouse Beta Synuclein Monomer (NBP3-14776). Load: 2 ug.





### **Novus Biologicals USA**

10730 E. Briarwood Avenue  
Centennial, CO 80112  
USA  
Phone: 303.730.1950  
Toll Free: 1.888.506.6887  
Fax: 303.730.1966  
nb-customerservice@bio-techne.com

### **Bio-Techne Canada**

21 Canmotor Ave  
Toronto, ON M8Z 4E6  
Canada  
Phone: 905.827.6400  
Toll Free: 855.668.8722  
Fax: 905.827.6402  
canada.inquires@bio-techne.com

### **Bio-Techne Ltd**

19 Barton Lane  
Abingdon Science Park  
Abingdon, OX14 3NB, United Kingdom  
Phone: (44) (0) 1235 529449  
Free Phone: 0800 37 34 15  
Fax: (44) (0) 1235 533420  
info.EMEA@bio-techne.com

### **General Contact Information**

www.novusbio.com  
Technical Support: nb-technical@bio-  
techne.com  
Orders: nb-customerservice@bio-techne.com  
General: novus@novusbio.com

### **Limitations**

This product is for research use only and is not approved for use in humans or in clinical diagnosis. Peptides and proteins are guaranteed for 3 months from date of receipt.

For more information on our 100% guarantee, please visit [www.novusbio.com/guarantee](http://www.novusbio.com/guarantee)

Earn gift cards/discounts by submitting a review: [www.novusbio.com/reviews/submit/NBP3-14776](http://www.novusbio.com/reviews/submit/NBP3-14776)

Earn gift cards/discounts by submitting a publication using this product:  
[www.novusbio.com/publications](http://www.novusbio.com/publications)

