

Product Datasheet

EpCAM/TROP1 Antibody (BLR077G) NBP3-14685

Unit Size: 100 ul

Store at 2 - 8 C / 1 year from date of receipt

www.novusbio.com



technical@novusbio.com

Protocols, Publications, Related Products, Reviews, Research Tools and Images at:
www.novusbio.com/NBP3-14685

Updated 10/3/2024 v.20.1

Earn rewards for product
reviews and publications.

Submit a publication at www.novusbio.com/publications

Submit a review at www.novusbio.com/reviews/destination/NBP3-14685



NBP3-14685

EpCAM/TROP1 Antibody (BLR077G)

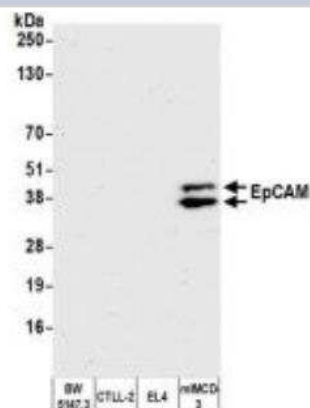
Product Information	
Unit Size	100 ul
Concentration	Please see the vial label for concentration. If unlisted please contact technical services.
Storage	Store at 2 - 8 C / 1 year from date of receipt
Clonality	Monoclonal
Clone	BLR077G
Preservative	0.09% Sodium Azide
Purity	>95%
Buffer	Borate Buffered Saline (BBS) pH 8.2 with 0.1% BSA and

Product Description	
Host	Rabbit
Gene ID	4072
Gene Symbol	EPCAM
Species	Human, Mouse
Immunogen	between 264 and 314 (C-term)

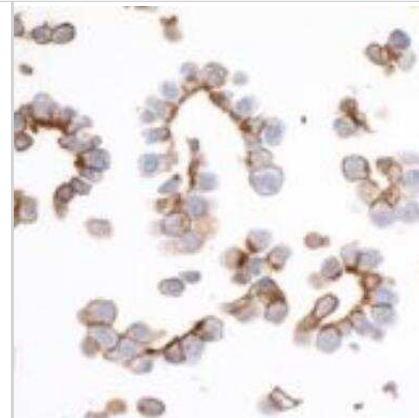
Product Application Details	
Applications	Western Blot, Immunocytochemistry/ Immunofluorescence, Immunohistochemistry, Immunohistochemistry-Paraffin, Immunoprecipitation
Recommended Dilutions	Western Blot 1:1000, Immunohistochemistry 1:100 - 1:500, Immunocytochemistry/ Immunofluorescence 1:100 - 1:500, Immunoprecipitation 12 ul/1 mg lysate, Immunohistochemistry-Paraffin 1:100 - 1:500
Application Notes	Epitope retrieval with citrate buffer pH6.0 is recommended for FFPE tissue sections.

Images

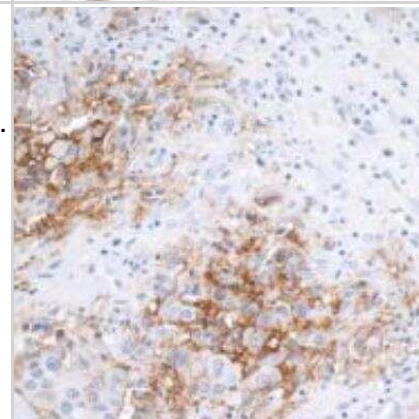
Western Blot: EpCAM/TROP1 Antibody (BLR077G) [NBP3-14685] - Whole cell lysate (50 ug) from BW5147.3, CTLL-2, EL4, and mIMCD-3 cells prepared using NETN lysis buffer. Antibody: Rabbit anti-EpCAM recombinant monoclonal antibody [BLR077G] used at 1:1000. Secondary: HRP-conjugated goat anti-rabbit IgG. Chemiluminescence with an exposure time of 30 seconds.



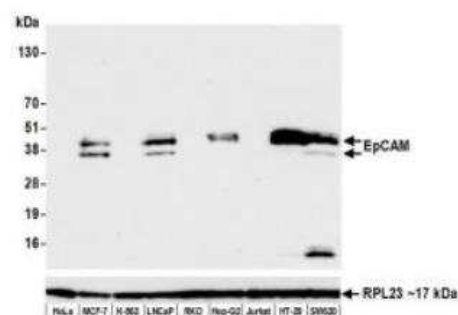
Immunocytochemistry/Immunofluorescence: EpCAM/TROP1 Antibody (BLR077G) [NBP3-14685] - Section of OVCAR-3 cells. Antibody: Rabbit anti-EpCAM recombinant monoclonal antibody [BLR077G] used at 1:100. Secondary: HRP-conjugated goat anti-rabbit IgG Substrate: DAB



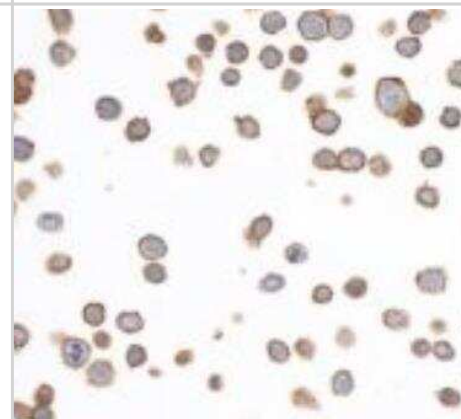
Immunohistochemistry-Paraffin: EpCAM/TROP1 Antibody (BLR077G) [NBP3-14685] - Section of human breast carcinoma. Antibody: Rabbit anti-EpCAM recombinant monoclonal antibody [BLR077G] used at 1:100. Secondary: HRP-conjugated goat anti-rabbit IgG. Substrate: DAB.



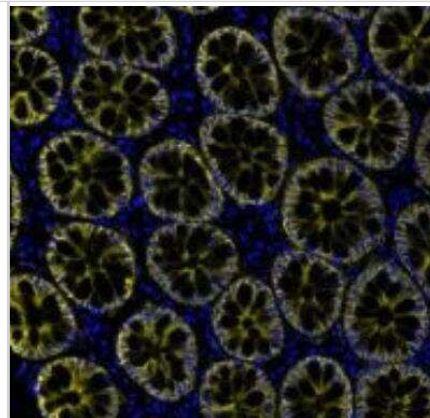
Western Blot: EpCAM/TROP1 Antibody (BLR077G) [NBP3-14685] - Whole cell lysate (50 ug) from HeLa, MCF-7, K-562, LNCaP, RKO, Hep-G2, Jurkat, HT-29, and SW620 cells prepared using NETN lysis buffer. Antibody: Rabbit anti-EpCAM recombinant monoclonal antibody [BLR077G] used at 1:1000. Secondary: HRP-conjugated goat anti-rabbit IgG. Chemiluminescence with an exposure time of 10 seconds. Lower Panel: Rabbit antiRPL23.



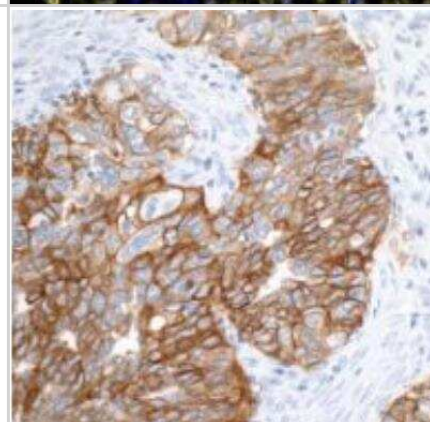
Immunocytochemistry/Immunofluorescence: EpCAM/TROP1 Antibody (BLR077G) [NBP3-14685] - Section of HT-29 cells. Antibody: Rabbit anti-EpCAM recombinant monoclonal antibody [BLR077G] used at 1:100. Secondary: HRP-conjugated goat anti-rabbit IgG. Substrate: DA



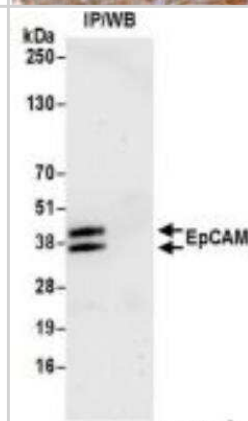
Immunohistochemistry-Paraffin: EpCAM/TROP1 Antibody (BLR077G) [NBP3-14685] - Rabbit anti-EpCAM recombinant monoclonal antibody [BLR077G]. Secondary: HRP-conjugated goat anti-rabbit IgG. Substrate: Opal™. Counterstain: DAPI.



Immunohistochemistry-Paraffin: EpCAM/TROP1 Antibody (BLR077G) [NBP3-14685] - Human ovarian carcinoma. Antibody: Rabbit anti-EpCAM recombinant monoclonal antibody [BLR077G] used at 1:100. Secondary: HRP-conjugated goat anti-rabbit IgG (A120-501P). Substrate: DA



Immunoprecipitation: EpCAM/TROP1 Antibody [NBP3-14685] - Whole cell lysate (1.0 mg per IP reaction; 20% of IP loaded) from MCF-7 cells prepared using NETN lysis buffer. Antibody: Rabbit antiEpCAM recombinant monoclonal antibody used at 12 ul per reaction. For blotting immunoprecipitated EpCAM was used at 1:1000. Chemiluminescence with an exposure time of 30 seconds.





Novus Biologicals USA

10730 E. Briarwood Avenue
Centennial, CO 80112
USA
Phone: 303.730.1950
Toll Free: 1.888.506.6887
Fax: 303.730.1966
nb-customerservice@bio-techne.com

Bio-Techne Canada

21 Canmotor Ave
Toronto, ON M8Z 4E6
Canada
Phone: 905.827.6400
Toll Free: 855.668.8722
Fax: 905.827.6402
canada.inquires@bio-techne.com

Bio-Techne Ltd

19 Barton Lane
Abingdon Science Park
Abingdon, OX14 3NB, United Kingdom
Phone: (44) (0) 1235 529449
Free Phone: 0800 37 34 15
Fax: (44) (0) 1235 533420
info.EMEA@bio-techne.com

General Contact Information

www.novusbio.com
Technical Support: nb-technical@bio-techne.com
Orders: nb-customerservice@bio-techne.com
General: novus@novusbio.com

Products Related to NBP3-14685

HAF008	Goat anti-Rabbit IgG Secondary Antibody [HRP]
NB7160	Goat anti-Rabbit IgG (H+L) Secondary Antibody [HRP]
NBP2-52190-0.05mg	Recombinant Human EpCAM/TROP1 His Protein
202-IL-010	IL-2 [Unconjugated]

Limitations

This product is for research use only and is not approved for use in humans or in clinical diagnosis. Primary Antibodies are guaranteed for 1 year from date of receipt.

For more information on our 100% guarantee, please visit www.novusbio.com/guarantee

Earn gift cards/discounts by submitting a review: www.novusbio.com/reviews/submit/NBP3-14685

Earn gift cards/discounts by submitting a publication using this product:
www.novusbio.com/publications

