

Product Datasheet

Apolipoprotein E/ApoE Antibody (GT1627) NBP3-13693

Unit Size: 100 ul

Store at 4C short term. Aliquot and store at -20C long term. Avoid freeze-thaw cycles.

www.novusbio.com



technical@novusbio.com

Protocols, Publications, Related Products, Reviews, Research Tools and Images at:
www.novusbio.com/NBP3-13693

Updated 3/7/2022 v.20.1

Earn rewards for product
reviews and publications.

Submit a publication at www.novusbio.com/publications

Submit a review at www.novusbio.com/reviews/destination/NBP3-13693



NBP3-13693**Apolipoprotein E/ApoE Antibody (GT1627)**

Product Information	
Unit Size	100 ul
Concentration	Concentrations vary lot to lot. See vial label for concentration. If unlisted please contact technical services.
Storage	Store at 4C short term. Aliquot and store at -20C long term. Avoid freeze-thaw cycles.
Clonality	Monoclonal
Clone	GT1627
Preservative	No Preservative
Isotype	IgG2b
Purity	Protein A purified
Buffer	PBS, 20% Glycerol

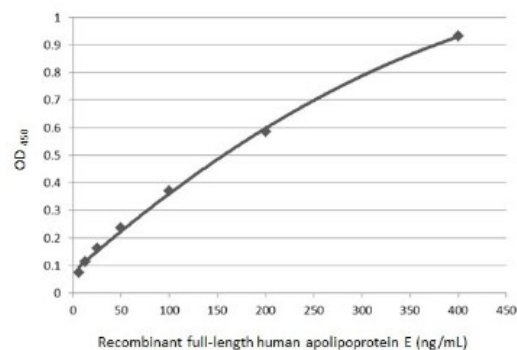
Product Description	
Host	Mouse
Gene ID	348
Gene Symbol	APOE
Species	Human
Immunogen	Recombinant protein encompassing a sequence within the center region of human Apolipoprotein E/ApoE. The exact sequence is proprietary.
Notes	Centrifuge briefly prior to opening.

Product Application Details	
Applications	ELISA, Sandwich ELISA
Recommended Dilutions	ELISA, Sandwich ELISA

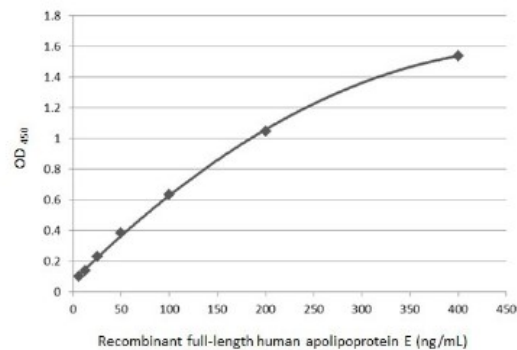


Images

ELISA: Apolipoprotein E/ApoE Antibody (GT1627) [NBP3-13693] - Indirect ELISA analysis performed by coating plate with recombinant full-length human apolipoprotein E (400-6.25 ng/mL). Coated protein was probed with Apolipoprotein E/ApoE antibody [GT1627] (NBP3-13693) (1 ug/mL). Mouse IgG antibody (HRP) (NBP2-19382) (1:10000) was used to detect bound primary antibody.



Sandwich ELISA: Apolipoprotein E/ApoE Antibody (GT1627) [NBP3-13693] - Sandwich ELISA detection of recombinant full-length human apolipoprotein E using Apolipoprotein E/ApoE antibody [GT1627] (NBP3-13693) as capture antibody at concentration of 5 ug/mL and Apolipoprotein E/ApoE antibody [C2C3], C-term as detection antibody at concentration of 1 ug/mL. Rabbit IgG antibody (HRP) (NBP2-19301) was diluted at 1:10000 and used to detect the primary antibody.





Novus Biologicals USA

10730 E. Briarwood Avenue
Centennial, CO 80112
USA

Phone: 303.730.1950
Toll Free: 1.888.506.6887
Fax: 303.730.1966
novus@novusbio.com

Bio-Techne Canada

21 Canmotor Ave
Toronto, ON M8Z 4E6
Canada

Phone: 905.827.6400
Toll Free: 855.668.8722
Fax: 905.827.6402
canada.inquires@bio-techne.com

Bio-Techne Ltd

19 Barton Lane
Abingdon Science Park
Abingdon, OX14 3NB, United Kingdom

Phone: (44) (0) 1235 529449
Free Phone: 0800 37 34 15
Fax: (44) (0) 1235 533420
info.EMEA@bio-techne.com

General Contact Information

www.novusbio.com
Technical Support: technical@novusbio.com
Orders: orders@novusbio.com
General: novus@novusbio.com

Products Related to NBP3-13693

HAF007	Goat anti-Mouse IgG Secondary Antibody [HRP (Horseradish Peroxidase)]
NB720-B	Rabbit anti-Mouse IgG (H+L) Secondary Antibody [Biotin]
NBP2-27231	Mouse IgG2b Isotype Control (MPC-11)
NBP1-99157	Recombinant Human Apolipoprotein E/ApoE Protein

Limitations

This product is for research use only and is not approved for use in humans or in clinical diagnosis. Primary Antibodies are guaranteed for 1 year from date of receipt.

For more information on our 100% guarantee, please visit www.novusbio.com/guarantee

Earn gift cards/discounts by submitting a review: www.novusbio.com/reviews/submit/NBP3-13693

Earn gift cards/discounts by submitting a publication using this product:
www.novusbio.com/publications

