

Product Datasheet

CTGF/CCN2 Antibody (28711)

NBP3-13686

Unit Size: 100 ul

Store at 4C short term. Aliquot and store at -20C long term. Avoid freeze-thaw cycles.

www.novusbio.com



technical@novusbio.com

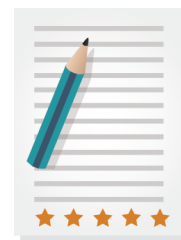
Protocols, Publications, Related Products, Reviews, Research Tools and Images at:
www.novusbio.com/NBP3-13686

Updated 6/14/2023 v.20.1

Earn rewards for product
reviews and publications.

Submit a publication at www.novusbio.com/publications

Submit a review at www.novusbio.com/reviews/destination/NBP3-13686



NBP3-13686

CTGF/CCN2 Antibody (28711)

Product Information	
Unit Size	100 ul
Concentration	Concentrations vary lot to lot. See vial label for concentration. If unlisted please contact technical services.
Storage	Store at 4C short term. Aliquot and store at -20C long term. Avoid freeze-thaw cycles.
Clonality	Monoclonal
Clone	28711
Preservative	No Preservative
Isotype	IgG1
Purity	Protein G purified
Buffer	PBS, 20% Glycerol
Target Molecular Weight	38 kDa

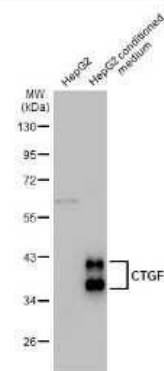
Product Description	
Description	Centrifuge briefly prior to opening.
Host	Mouse
Gene ID	1490
Gene Symbol	CCN2
Species	Human, Mouse
Immunogen	Recombinant protein encompassing a sequence within the center region of human CTGF/CCN2. The exact sequence is proprietary.

Product Application Details	
Applications	Western Blot, Immunocytochemistry/ Immunofluorescence, Immunohistochemistry, Immunohistochemistry-Paraffin
Recommended Dilutions	Western Blot 1:500-1:3000, Immunohistochemistry, Immunocytochemistry/ Immunofluorescence, Immunohistochemistry-Paraffin
Application Notes	IHC, ICC/IF-Assay dependent

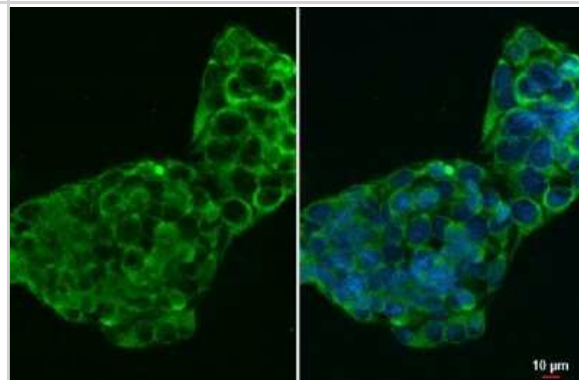


Images

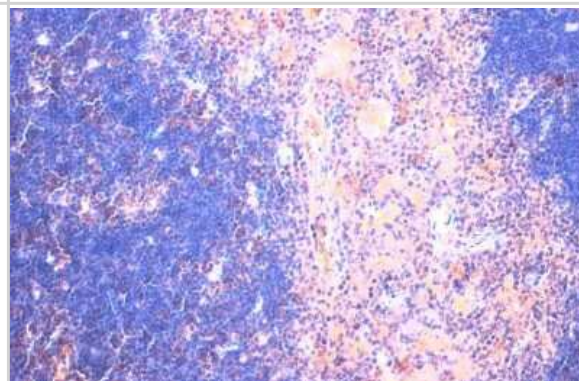
Western Blot: CTGF/CCN2 Antibody (GT28711) [NBP3-13686] - HepG2 whole cell extract and conditioned medium (30 ug) were separated by 10% SDS-PAGE, and the membrane was blotted with CTGF/CCN2 antibody [GT28711] (NBP3-13686) diluted at 1:1000. The HRP-conjugated anti-mouse IgG antibody (NBP2-19382) was used to detect the primary antibody.



Immunocytochemistry/Immunofluorescence: CTGF/CCN2 Antibody (GT28711) [NBP3-13686] - CTGF/CCN2 antibody [28711] detects CTGF/CCN2 protein by immunofluorescent analysis. Sample: HepG2 cells were fixed in ice-cold MeOH for 5 min. Green: CTGF/CCN2 stained by CTGF/CCN2 antibody [28711] (NBP3-13686) diluted at 1:500.



Immunohistochemistry-Paraffin: CTGF/CCN2 Antibody (GT28711) [NBP3-13686] - Mouse thymus gland. CTGF/CCN2 stained by CTGF/CCN2 antibody [28711] (NBP3-13686) diluted at 1:200. Antigen Retrieval: Citrate buffer, pH 6.0, 15 min.





Novus Biologicals USA

10730 E. Briarwood Avenue
Centennial, CO 80112
USA
Phone: 303.730.1950
Toll Free: 1.888.506.6887
Fax: 303.730.1966
nb-customerservice@bio-techne.com

Bio-Techne Canada

21 Canmotor Ave
Toronto, ON M8Z 4E6
Canada
Phone: 905.827.6400
Toll Free: 855.668.8722
Fax: 905.827.6402
canada.inquires@bio-techne.com

Bio-Techne Ltd

19 Barton Lane
Abingdon Science Park
Abingdon, OX14 3NB, United Kingdom
Phone: (44) (0) 1235 529449
Free Phone: 0800 37 34 15
Fax: (44) (0) 1235 533420
info.EMEA@bio-techne.com

General Contact Information

www.novusbio.com
Technical Support: nb-technical@bio-techne.com
Orders: nb-customerservice@bio-techne.com
General: novus@novusbio.com

Products Related to NBP3-13686

HAF007	Goat anti-Mouse IgG Secondary Antibody [HRP]
NB720-B	Rabbit anti-Mouse IgG (H+L) Secondary Antibody [Biotin]
NBP1-97005-0.5mg	Mouse IgG1 Isotype Control (MG1)
NB100-724PEP	CTGF/CCN2 Antibody Blocking Peptide

Limitations

This product is for research use only and is not approved for use in humans or in clinical diagnosis. Primary Antibodies are guaranteed for 1 year from date of receipt.

For more information on our 100% guarantee, please visit www.novusbio.com/guarantee

Earn gift cards/discounts by submitting a review: www.novusbio.com/reviews/submit/NBP3-13686

Earn gift cards/discounts by submitting a publication using this product:
www.novusbio.com/publications

