

Product Datasheet

ATP6V1A Antibody (GT811)

NBP3-13541

Unit Size: 100 ul

Store at 4C short term. Aliquot and store at -20C long term. Avoid freeze-thaw cycles.

www.novusbio.com



technical@novusbio.com

Protocols, Publications, Related Products, Reviews, Research Tools and Images at:
www.novusbio.com/NBP3-13541

Updated 6/14/2023 v.20.1

Earn rewards for product
reviews and publications.

Submit a publication at www.novusbio.com/publications

Submit a review at www.novusbio.com/reviews/destination/NBP3-13541



NBP3-13541

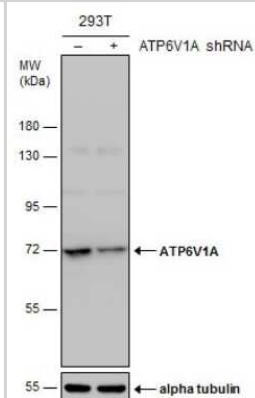
ATP6V1A Antibody (GT811)

Product Information	
Unit Size	100 ul
Concentration	Concentrations vary lot to lot. See vial label for concentration. If unlisted please contact technical services.
Storage	Store at 4C short term. Aliquot and store at -20C long term. Avoid freeze-thaw cycles.
Clonality	Monoclonal
Clone	GT811
Preservative	No Preservative
Isotype	IgG2b
Purity	Protein A purified
Buffer	PBS
Product Description	
Description	Centrifuge briefly prior to opening.
Host	Mouse
Gene ID	523
Gene Symbol	ATP6V1A
Species	Human
Reactivity Notes	Chicken (82%)
Immunogen	Recombinant protein encompassing a sequence within the center region of human ATP6V1A. The exact sequence is proprietary.
Product Application Details	
Applications	Western Blot, Flow Cytometry, Immunocytochemistry/ Immunofluorescence
Recommended Dilutions	Western Blot, Flow Cytometry, Immunocytochemistry/ Immunofluorescence

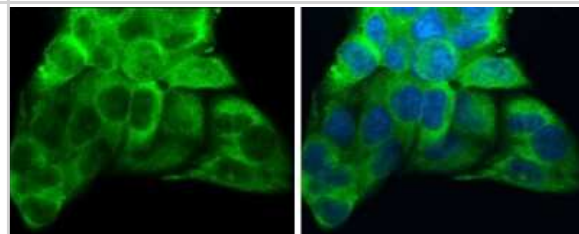


Images

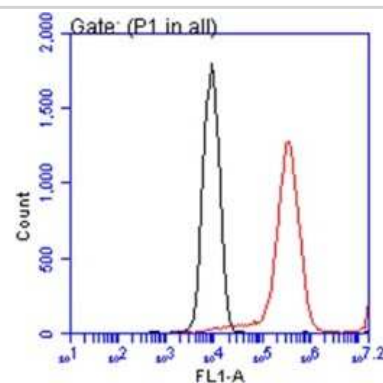
Western Blot: ATP6V1A Antibody (GT811) [NBP3-13541] - Non-transfected (-) and transfected (+) 293T whole cell extracts (30 ug) were separated by 7.5% SDS-PAGE, and the membrane was blotted with ATP6V1A antibody [GT811] (NBP3-13541) diluted at 1:500.



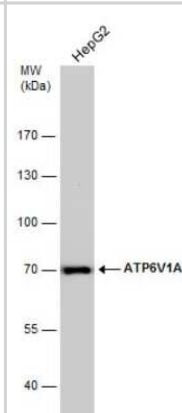
Immunocytochemistry/Immunofluorescence: ATP6V1A Antibody (GT811) [NBP3-13541] - ATP6V1A antibody [GT811] detects ATP6V1A protein at cytoplasm by immunofluorescent analysis. Sample: Hep G2 cells were fixed in 4% paraformaldehyde at RT for 15 min. Green: ATP6V1A protein stained by ATP6V1A antibody [GT811] (NBP3-13541) diluted at 1:200. Blue: Hoechst 33342 staining.



Flow Cytometry: ATP6V1A Antibody (GT811) [NBP3-13541] - ATP6V1A antibody [GT811] (NBP3-13541) detects ATP6V1A protein by flow cytometry analysis. Sample: HepG2 cell. Black: Unlabelled sample was used as a control. Red: ATP6V1A antibody [GT811] (NBP3-13541) dilution: 1:50. Acquisition of 20,000 events were collected for FACS analysis.



Western Blot: ATP6V1A Antibody (GT811) [NBP3-13541] - Whole cell extract (30 ug) was separated by 7.5% SDS-PAGE, and the membrane was blotted with ATP6V1A antibody [GT811] (NBP3-13541) diluted at 1:1000.





Novus Biologicals USA

10730 E. Briarwood Avenue
Centennial, CO 80112
USA
Phone: 303.730.1950
Toll Free: 1.888.506.6887
Fax: 303.730.1966
nb-customerservice@bio-techne.com

Bio-Techne Canada

21 Canmotor Ave
Toronto, ON M8Z 4E6
Canada
Phone: 905.827.6400
Toll Free: 855.668.8722
Fax: 905.827.6402
canada.inquires@bio-techne.com

Bio-Techne Ltd

19 Barton Lane
Abingdon Science Park
Abingdon, OX14 3NB, United Kingdom
Phone: (44) (0) 1235 529449
Free Phone: 0800 37 34 15
Fax: (44) (0) 1235 533420
info.EMEA@bio-techne.com

General Contact Information

www.novusbio.com
Technical Support: nb-technical@bio-techne.com
Orders: nb-customerservice@bio-techne.com
General: novus@novusbio.com

Products Related to NBP3-13541

HAF007	Goat anti-Mouse IgG Secondary Antibody [HRP]
NB720-B	Rabbit anti-Mouse IgG (H+L) Secondary Antibody [Biotin]
NBP2-27231	Mouse IgG2b Isotype Control (MPC-11)
H00000523-P01-2ug	Recombinant Human ATP6V1A GST (N-Term) Protein

Limitations

This product is for research use only and is not approved for use in humans or in clinical diagnosis. Primary Antibodies are guaranteed for 1 year from date of receipt.

For more information on our 100% guarantee, please visit www.novusbio.com/guarantee

Earn gift cards/discounts by submitting a review: www.novusbio.com/reviews/submit/NBP3-13541

Earn gift cards/discounts by submitting a publication using this product:
www.novusbio.com/publications

