

# Product Datasheet

## Brg1 Antibody (GT2712) NBP3-13537

Unit Size: 100 ul

Store at 4C short term. Aliquot and store at -20C long term. Avoid freeze-thaw cycles.

[www.novusbio.com](http://www.novusbio.com)



[technical@novusbio.com](mailto:technical@novusbio.com)

Protocols, Publications, Related Products, Reviews, Research Tools and Images at:  
[www.novusbio.com/NBP3-13537](http://www.novusbio.com/NBP3-13537)

Updated 6/14/2023 v.20.1

Earn rewards for product  
reviews and publications.

Submit a publication at [www.novusbio.com/publications](http://www.novusbio.com/publications)

Submit a review at [www.novusbio.com/reviews/destination/NBP3-13537](http://www.novusbio.com/reviews/destination/NBP3-13537)



**NBP3-13537**

Brg1 Antibody (GT2712)

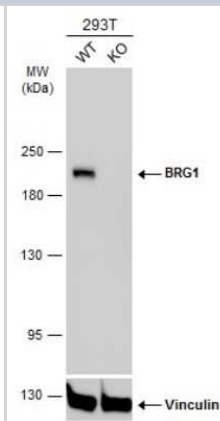
Product Information	
Unit Size	100 ul
Concentration	Concentrations vary lot to lot. See vial label for concentration. If unlisted please contact technical services.
Storage	Store at 4C short term. Aliquot and store at -20C long term. Avoid freeze-thaw cycles.
Clonality	Monoclonal
Clone	GT2712
Preservative	No Preservative
Isotype	IgG1
Purity	Protein G purified
Buffer	PBS

Product Description	
Description	Centrifuge briefly prior to opening.
Host	Mouse
Gene ID	6597
Gene Symbol	SMARCA4
Species	Human, Mouse, Rat
Reactivity Notes	Chicken (84%), Bovine (87%)
Immunogen	Recombinant protein encompassing a sequence within the N-terminus region of human Brg1. The exact sequence is proprietary.

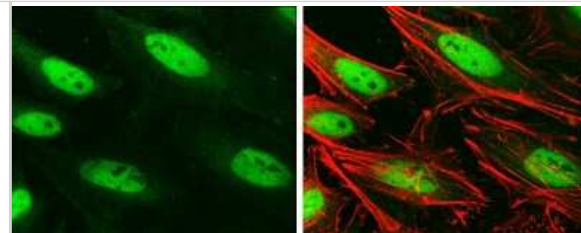
Product Application Details	
Applications	Western Blot, Immunocytochemistry/ Immunofluorescence, Immunohistochemistry, Immunohistochemistry-Frozen, Immunohistochemistry-Paraffin
Recommended Dilutions	Western Blot, Immunohistochemistry, Immunocytochemistry/ Immunofluorescence, Immunohistochemistry-Paraffin, Immunohistochemistry-Frozen

**Images**

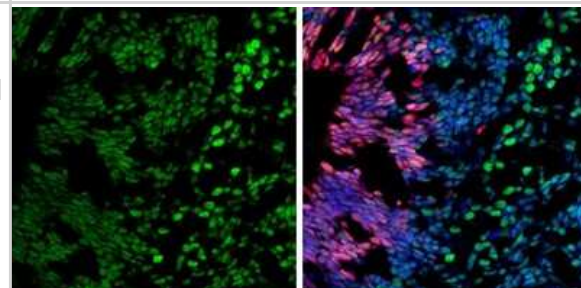
Western Blot: Brg1 Antibody (GT2712) [NBP3-13537] - Wild-type (WT) and Brg1 knockout (KO) 293T cell extracts (30 ug) were separated by 5% SDS-PAGE, and the membrane was blotted with Brg1 antibody [GT2712] (NBP3-13537) diluted at 1:1000. The HRP-conjugated anti-mouse IgG antibody (NBP2-19382) was used to detect the primary antibody, and the signal was developed with Trident ECL plus-Enhanced.



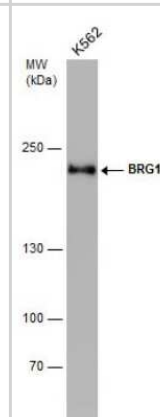
**Immunocytochemistry/Immunofluorescence: Brg1 Antibody (GT2712) [NBP3-13537]** - Brg1 antibody [GT2712] detects Brg1 protein at nucleus by immunofluorescent analysis. Sample: HeLa cells were fixed in 4% paraformaldehyde at RT for 15 min. Green: Brg1 protein stained by Brg1 antibody [GT2712] (NBP3-13537) diluted at 1:100. Red: phalloidin, a cytoskeleton marker, diluted at 1:50. Blue: Hoechst 33342 staining.



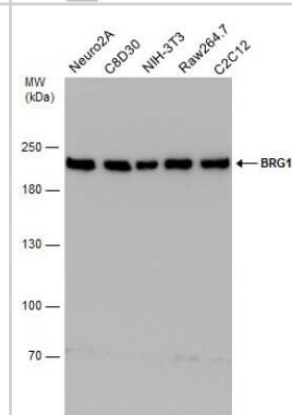
**Immunohistochemistry-Frozen: Brg1 Antibody (GT2712) [NBP3-13537]** - Brg1 antibody [GT2712] detects Brg1 protein by immunohistochemical analysis. Sample: Frozen-sectioned rat E13.5 brain. Green: Brg1 stained by Brg1 antibody [GT2712] (NBP3-13537) diluted at 1:250. Red: SOX2, stained by SOX2 antibody [N1C3] (NBP1-33766) diluted at 1:500. Blue: Fluoroshield with DAPI.



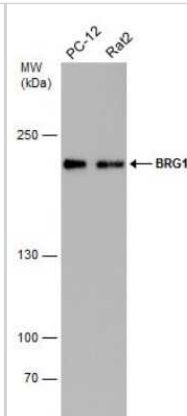
**Western Blot: Brg1 Antibody (GT2712) [NBP3-13537]** - Whole cell extract (30 ug) was separated by 5% SDS-PAGE, and the membrane was blotted with Brg1 antibody [GT2712] (NBP3-13537) diluted at 1:1000.



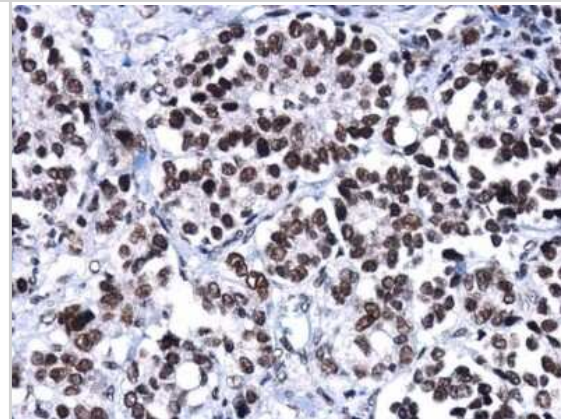
**Western Blot: Brg1 Antibody (GT2712) [NBP3-13537]** - Various whole cell extracts (30 ug) were separated by 5% SDS-PAGE, and the membrane was blotted with Brg1 antibody [GT2712] (NBP3-13537) diluted at 1:1000.



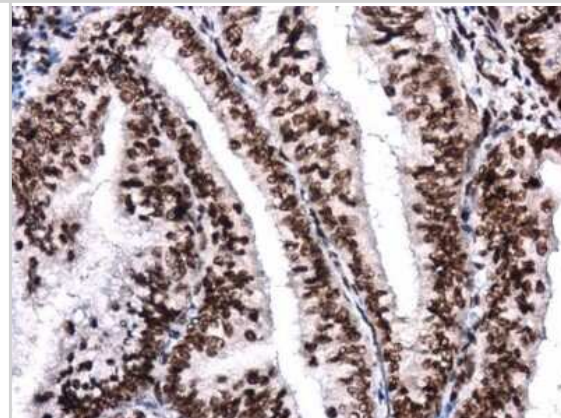
Western Blot: Brg1 Antibody (GT2712) [NBP3-13537] - Various whole cell extracts (30 ug) were separated by 5% SDS-PAGE, and the membrane was blotted with Brg1 antibody [GT2712] (NBP3-13537) diluted at 1:1000.



Immunohistochemistry-Paraffin: Brg1 Antibody (GT2712) [NBP3-13537] - Brg1 antibody [GT2712] detects Brg1 protein at nucleus in human oral carcinoma by immunohistochemical analysis. Sample: Paraffin-embedded human oral carcinoma. Brg1 antibody [GT2712] (NBP3-13537) diluted at 1:250. Antigen Retrieval: Citrate buffer, pH 6.0, 15 min



Immunohistochemistry-Paraffin: Brg1 Antibody (GT2712) [NBP3-13537] - Brg1 antibody [GT2712] detects Brg1 protein at nucleus in human endometrial carcinoma by immunohistochemical analysis. Sample: Paraffin-embedded human endometrial carcinoma. Brg1 antibody [GT2712] (NBP3-13537) diluted at 1:250. Antigen Retrieval: Citrate buffer, pH 6.0, 15 min





### **Novus Biologicals USA**

10730 E. Briarwood Avenue  
Centennial, CO 80112  
USA  
Phone: 303.730.1950  
Toll Free: 1.888.506.6887  
Fax: 303.730.1966  
nb-customerservice@bio-techne.com

### **Bio-Techne Canada**

21 Canmotor Ave  
Toronto, ON M8Z 4E6  
Canada  
Phone: 905.827.6400  
Toll Free: 855.668.8722  
Fax: 905.827.6402  
canada.inquires@bio-techne.com

### **Bio-Techne Ltd**

19 Barton Lane  
Abingdon Science Park  
Abingdon, OX14 3NB, United Kingdom  
Phone: (44) (0) 1235 529449  
Free Phone: 0800 37 34 15  
Fax: (44) (0) 1235 533420  
info.EMEA@bio-techne.com

### **General Contact Information**

[www.novusbio.com](http://www.novusbio.com)  
Technical Support: nb-technical@bio-techne.com  
Orders: nb-customerservice@bio-techne.com  
General: novus@novusbio.com

### **Products Related to NBP3-13537**

HAF007	Goat anti-Mouse IgG Secondary Antibody [HRP]
NB720-B	Rabbit anti-Mouse IgG (H+L) Secondary Antibody [Biotin]
NBP1-97005-0.5mg	Mouse IgG1 Isotype Control (MG1)
NBP2-51811-0.1mg	Recombinant Human Brg1 His Protein

### **Limitations**

This product is for research use only and is not approved for use in humans or in clinical diagnosis. Primary Antibodies are guaranteed for 1 year from date of receipt.

For more information on our 100% guarantee, please visit [www.novusbio.com/guarantee](http://www.novusbio.com/guarantee)

Earn gift cards/discounts by submitting a review: [www.novusbio.com/reviews/submit/NBP3-13537](http://www.novusbio.com/reviews/submit/NBP3-13537)

Earn gift cards/discounts by submitting a publication using this product:  
[www.novusbio.com/publications](http://www.novusbio.com/publications)

