

Product Datasheet

CXCL16 Antibody (GT516)

NBP3-13519

Unit Size: 100 ul

Store at 4C short term. Aliquot and store at -20C long term. Avoid freeze-thaw cycles.

www.novusbio.com



technical@novusbio.com

Protocols, Publications, Related Products, Reviews, Research Tools and Images at:
www.novusbio.com/NBP3-13519

Updated 3/8/2022 v.20.1

Earn rewards for product
reviews and publications.

Submit a publication at www.novusbio.com/publications

Submit a review at www.novusbio.com/reviews/destination/NBP3-13519



NBP3-13519

CXCL16 Antibody (GT516)

Product Information	
Unit Size	100 ul
Concentration	Concentrations vary lot to lot. See vial label for concentration. If unlisted please contact technical services.
Storage	Store at 4C short term. Aliquot and store at -20C long term. Avoid freeze-thaw cycles.
Clonality	Monoclonal
Clone	GT516
Preservative	No Preservative
Isotype	IgG2a
Purity	Protein A purified
Buffer	PBS

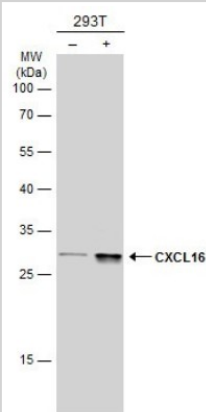
Product Description	
Host	Mouse
Gene ID	58191
Gene Symbol	CXCL16
Species	Human, Mouse, Rat
Immunogen	Recombinant protein encompassing a sequence within the center region of human CXCL16. The exact sequence is proprietary.
Notes	Centrifuge briefly prior to opening.

Product Application Details	
Applications	Western Blot, Immunohistochemistry, Immunohistochemistry-Paraffin
Recommended Dilutions	Western Blot, Immunohistochemistry, Immunohistochemistry-Paraffin

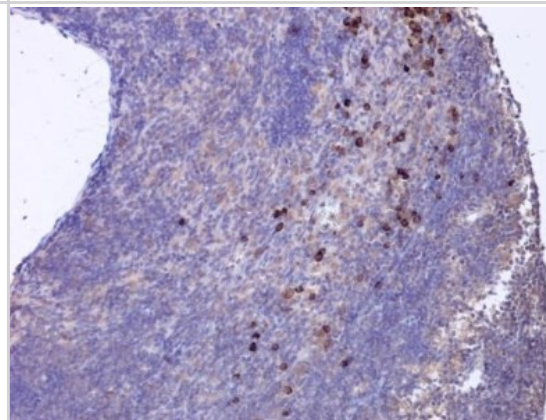


Images

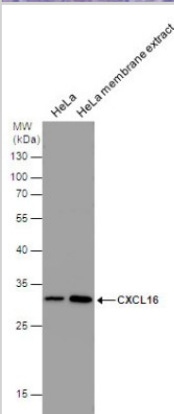
Western Blot: CXCL16 Antibody (GT516) [NBP3-13519] - Non-transfected (-) and transfected (+) 293T whole cell extracts (30 ug) were separated by 12% SDS-PAGE, and the membrane was blotted with CXCL16 antibody [GT516] (NBP3-13519) diluted at 1:5000. The HRP-conjugated anti-mouse IgG antibody (NBP2-19382) was used to detect the primary antibody.



Immunohistochemistry-Paraffin: CXCL16 Antibody (GT516) [NBP3-13519] - CXCL16 antibody [GT516] detects CXCL16 protein at cytoplasm in rat lymph node by immunohistochemical analysis. Sample: Paraffin-embedded rat lymph node. CXCL16 antibody [GT516] (NBP3-13519) diluted at 1:200. Antigen Retrieval: Citrate buffer, pH 6.0, 15 min



Western Blot: CXCL16 Antibody (GT516) [NBP3-13519] - CXCL16 antibody [GT516] detects CXCL16 protein by western blot analysis. HeLa whole cell extracts and membrane extracts (30 ug) were separated by 12% SDS-PAGE, and the membrane was blotted with CXCL16 antibody [GT516] (NBP3-13519) diluted at 1:1000.





Novus Biologicals USA

10730 E. Briarwood Avenue
Centennial, CO 80112
USA

Phone: 303.730.1950
Toll Free: 1.888.506.6887
Fax: 303.730.1966
novus@novusbio.com

Bio-Techne Canada

21 Canmotor Ave
Toronto, ON M8Z 4E6
Canada

Phone: 905.827.6400
Toll Free: 855.668.8722
Fax: 905.827.6402
canada.inquires@bio-techne.com

Bio-Techne Ltd

19 Barton Lane
Abingdon Science Park
Abingdon, OX14 3NB, United Kingdom

Phone: (44) (0) 1235 529449
Free Phone: 0800 37 34 15
Fax: (44) (0) 1235 533420
info.EMEA@bio-techne.com

General Contact Information

www.novusbio.com
Technical Support: technical@novusbio.com
Orders: orders@novusbio.com
General: novus@novusbio.com

Products Related to NBP3-13519

HAF007	Goat anti-Mouse IgG Secondary Antibody [HRP (Horseradish Peroxidase)]
NB720-B	Rabbit anti-Mouse IgG (H+L) Secondary Antibody [Biotin]
NBP1-96778	Mouse IgG2a Isotype Control (M2A)
NBP2-35166-5ug	Recombinant Mouse CXCL16 Protein

Limitations

This product is for research use only and is not approved for use in humans or in clinical diagnosis. Primary Antibodies are guaranteed for 1 year from date of receipt.

For more information on our 100% guarantee, please visit www.novusbio.com/guarantee

Earn gift cards/discounts by submitting a review: www.novusbio.com/reviews/submit/NBP3-13519

Earn gift cards/discounts by submitting a publication using this product:
www.novusbio.com/publications

