

# Product Datasheet

## beta-III Tubulin Antibody (GT1338) NBP3-13505

Unit Size: 100 ul

Store at 4C short term. Aliquot and store at -20C long term. Avoid freeze-thaw cycles.

[www.novusbio.com](http://www.novusbio.com)



[technical@novusbio.com](mailto:technical@novusbio.com)

Protocols, Publications, Related Products, Reviews, Research Tools and Images at:  
[www.novusbio.com/NBP3-13505](http://www.novusbio.com/NBP3-13505)

Updated 3/8/2022 v.20.1

Earn rewards for product  
reviews and publications.

Submit a publication at [www.novusbio.com/publications](http://www.novusbio.com/publications)

Submit a review at [www.novusbio.com/reviews/destination/NBP3-13505](http://www.novusbio.com/reviews/destination/NBP3-13505)



**NBP3-13505**

beta-III Tubulin Antibody (GT1338)

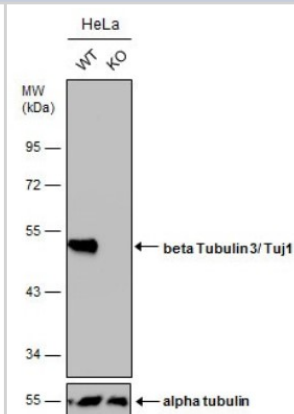
Product Information	
Unit Size	100 ul
Concentration	Concentrations vary lot to lot. See vial label for concentration. If unlisted please contact technical services.
Storage	Store at 4C short term. Aliquot and store at -20C long term. Avoid freeze-thaw cycles.
Clonality	Monoclonal
Clone	GT1338
Preservative	No Preservative
Isotype	IgG2a
Purity	Protein A purified
Buffer	PBS

Product Description	
Host	Mouse
Gene ID	10381
Gene Symbol	TUBB3
Species	Human, Mouse, Rat
Immunogen	Carrier-protein conjugated synthetic peptide encompassing a sequence within the C-terminus region of human beta-III Tubulin. The exact sequence is proprietary.
Notes	Centrifuge briefly prior to opening.

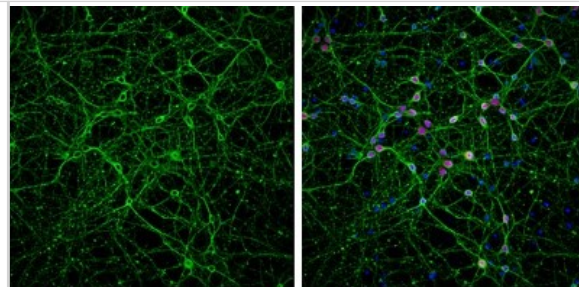
Product Application Details	
Applications	Western Blot, Immunocytochemistry/Immunofluorescence, Immunohistochemistry, Immunohistochemistry-Paraffin
Recommended Dilutions	Western Blot, Immunohistochemistry, Immunocytochemistry/Immunofluorescence, Immunohistochemistry-Paraffin

**Images**

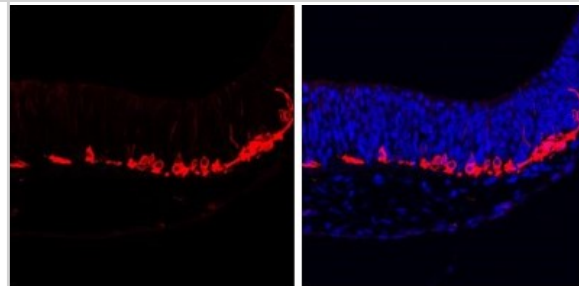
Western Blot: beta-III Tubulin Antibody (GT1338) [NBP3-13505] - Wild-type (WT) and beta-III Tubulin knockout (KO) HeLa cell extracts (30 ug) were separated by 10% SDS-PAGE, and the membrane was blotted with beta-III Tubulin antibody [GT1338] (NBP3-13505) diluted at 1:5000. The HRP-conjugated anti-mouse IgG antibody (NBP2-19382) was used to detect the primary antibody.



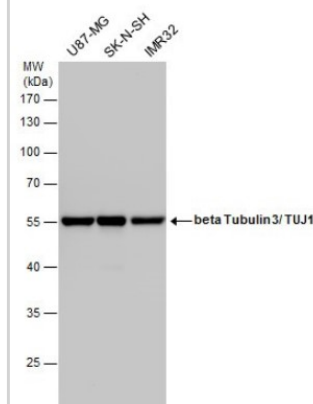
**Immunocytochemistry/Immunofluorescence:** beta-III Tubulin Antibody (GT1338) [NBP3-13505] - beta-III Tubulin antibody [GT1338] detects beta-III Tubulin protein at cytoplasm by immunofluorescent analysis. Sample: DIV9 rat E18 primary cortical neurons were fixed in 4% paraformaldehyde at RT for 15 min. Green: beta-III Tubulin protein stained by beta-III Tubulin antibody [GT1338] (NBP3-13505) diluted at 1:500. Red: NeuN, stained by NeuN antibody diluted at 1:1000. Blue: Fluoroshield with DAPI.



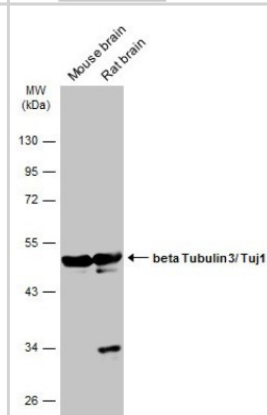
**Immunohistochemistry-Paraffin:** beta-III Tubulin Antibody (GT1338) [NBP3-13505] - beta-III Tubulin antibody [GT1338] detects beta-III Tubulin protein at cytoplasm by immunohistochemical analysis. Sample: Paraffin-embedded mouse E10.5 embryo. Red: beta-III Tubulin stained by beta-III Tubulin antibody [GT1338] (NBP3-13505) diluted at 1:500. Blue: Fluoroshield with DAPI.



**Western Blot:** beta-III Tubulin Antibody (GT1338) [NBP3-13505] - beta Tubulin 3/ TUJ1 antibody detects beta Tubulin 3/ TUJ1 protein by Western blot analysis. Various whole cell extracts (30 ug) were separated by 10% SDS-PAGE, and the membrane was blotted with beta Tubulin 3/ TUJ1 antibody (NBP3-13505) diluted by 1:1000.



**Western Blot:** beta-III Tubulin Antibody (GT1338) [NBP3-13505] - Various tissue extracts (50 ug) were separated by 10% SDS-PAGE, and the membrane was blotted with beta-III Tubulin antibody [GT1338] (NBP3-13505) diluted at 1:10000. The HRP-conjugated anti-mouse IgG antibody (NBP2-19382) was used to detect the primary antibody.





### **Novus Biologicals USA**

10730 E. Briarwood Avenue  
Centennial, CO 80112  
USA

Phone: 303.730.1950  
Toll Free: 1.888.506.6887  
Fax: 303.730.1966  
novus@novusbio.com

### **Bio-Techne Canada**

21 Canmotor Ave  
Toronto, ON M8Z 4E6  
Canada

Phone: 905.827.6400  
Toll Free: 855.668.8722  
Fax: 905.827.6402  
canada.inquires@bio-techne.com

### **Bio-Techne Ltd**

19 Barton Lane  
Abingdon Science Park  
Abingdon, OX14 3NB, United Kingdom

Phone: (44) (0) 1235 529449  
Free Phone: 0800 37 34 15  
Fax: (44) (0) 1235 533420  
info.EMEA@bio-techne.com

### **General Contact Information**

www.novusbio.com  
Technical Support: technical@novusbio.com  
Orders: orders@novusbio.com  
General: novus@novusbio.com

### **Products Related to NBP3-13505**

---

HAF007	Goat anti-Mouse IgG Secondary Antibody [HRP (Horseradish Peroxidase)]
NB720-B	Rabbit anti-Mouse IgG (H+L) Secondary Antibody [Biotin]
NBP1-96778	Mouse IgG2a Isotype Control (M2A)
NBP2-22901	Recombinant Human beta-III Tubulin His Protein

---

### **Limitations**

This product is for research use only and is not approved for use in humans or in clinical diagnosis. Primary Antibodies are guaranteed for 1 year from date of receipt.

For more information on our 100% guarantee, please visit [www.novusbio.com/guarantee](http://www.novusbio.com/guarantee)

Earn gift cards/discounts by submitting a review: [www.novusbio.com/reviews/submit/NBP3-13505](http://www.novusbio.com/reviews/submit/NBP3-13505)

Earn gift cards/discounts by submitting a publication using this product:  
[www.novusbio.com/publications](http://www.novusbio.com/publications)

