

# Product Datasheet

## Influenza A H1N1 Nucleoprotein Antibody (GT1236) - (A/WSN/1933) NBP3-13493

Unit Size: 100 ul

Store at 4C short term. Aliquot and store at -20C long term. Avoid freeze-thaw cycles.

[www.novusbio.com](http://www.novusbio.com)



[technical@novusbio.com](mailto:technical@novusbio.com)

Protocols, Publications, Related Products, Reviews, Research Tools and Images at:  
[www.novusbio.com/NBP3-13493](http://www.novusbio.com/NBP3-13493)

Updated 6/14/2023 v.20.1

Earn rewards for product  
reviews and publications.

Submit a publication at [www.novusbio.com/publications](http://www.novusbio.com/publications)

Submit a review at [www.novusbio.com/reviews/destination/NBP3-13493](http://www.novusbio.com/reviews/destination/NBP3-13493)



**NBP3-13493**

Influenza A H1N1 Nucleoprotein Antibody (GT1236) - (A/WSN/1933)

**Product Information**

<b>Unit Size</b>	100 ul
<b>Concentration</b>	Concentrations vary lot to lot. See vial label for concentration. If unlisted please contact technical services.
<b>Storage</b>	Store at 4C short term. Aliquot and store at -20C long term. Avoid freeze-thaw cycles.
<b>Clonality</b>	Monoclonal
<b>Clone</b>	GT1236
<b>Preservative</b>	No Preservative
<b>Isotype</b>	IgG2b
<b>Purity</b>	Protein G purified
<b>Buffer</b>	PBS

**Product Description**

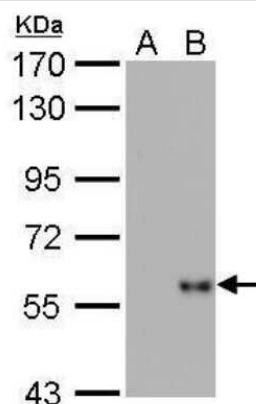
<b>Description</b>	Centrifuge briefly prior to opening.
<b>Host</b>	Mouse
<b>Species</b>	Virus
<b>Specificity/Sensitivity</b>	Influenza A H1N1 Nucleoprotein. (A/WSN/1933)
<b>Immunogen</b>	Recombinant protein of Influenza A H1N1 nucleoprotein (A/WSN/1933). The exact sequence is proprietary.

**Product Application Details**

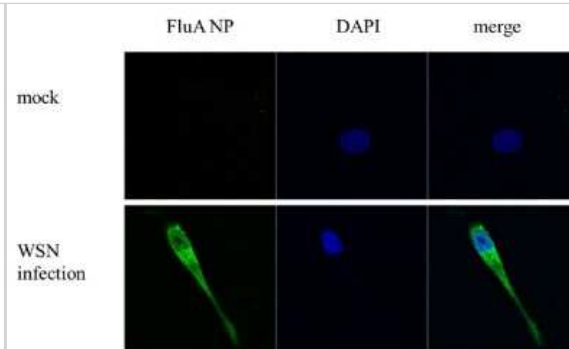
<b>Applications</b>	Western Blot, ELISA, Immunocytochemistry/ Immunofluorescence, Immunohistochemistry, Immunohistochemistry-Paraffin, Sandwich ELISA
<b>Recommended Dilutions</b>	Western Blot, ELISA, Immunohistochemistry, Immunocytochemistry/ Immunofluorescence, Immunohistochemistry-Paraffin, Sandwich ELISA

**Images**

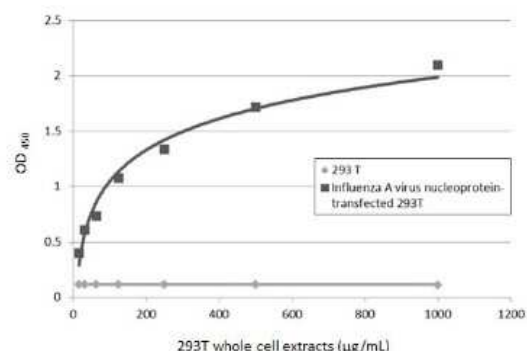
Western Blot: Influenza A H1N1 Nucleoprotein Antibody (GT1236) [NBP3-13493] - Influenza A H1N1 Nucleoprotein antibody [GT1236] detects Influenza A H1N1 Nucleoprotein by Western blot analysis. A. 5 ug DF1 whole cell lysate/extract B. 5 ug whole cell lysate/extract of WSN virus infected DF1 cells (10 hr) 7.5 % SDS-PAGE Influenza A H1N1 Nucleoprotein antibody [GT1236] (NBP3-13493) dilution: 1:5000



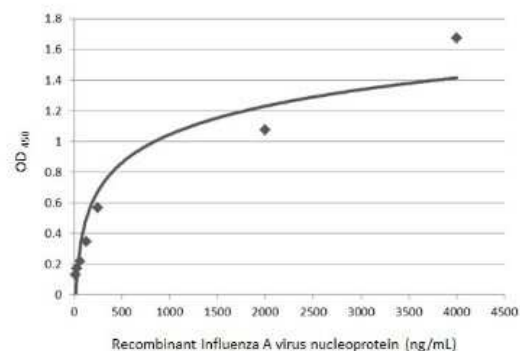
Immunocytochemistry/Immunofluorescence: Influenza A H1N1 Nucleoprotein Antibody (GT1236) [NBP3-13493] - Influenza A H1N1 Nucleoprotein antibody [GT1236] detects Influenza A H1N1 Nucleoprotein by immunofluorescent analysis. Sample: DF1 cells infected with Influenza A virus (WSN) . Green: Influenza A H1N1 Nucleoprotein stained by Influenza A H1N1 Nucleoprotein antibody [GT1236] (NBP3-13493) diluted at 1:500. Blue: Hoechst 33342 staining.



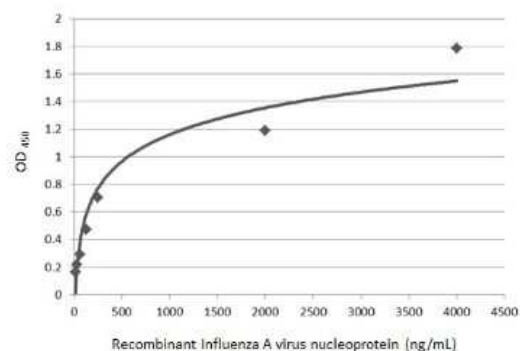
Sandwich ELISA: Influenza A H1N1 Nucleoprotein Antibody (GT1236) [NBP3-13493] - Sandwich ELISA detection of non-transfected and Influenza A virus nucleoprotein transfected 293T whole cell extracts using Influenza A H1N1 Nucleoprotein antibody [GT1236] (NBP3-13493) as capture antibody at concentration of 5 ug/mL and Influenza A H1N1 Nucleoprotein antibody (NBP2-16965) as detection antibody at concentration of 1 ug/mL. Rabbit IgG antibody (HRP) (NBP2-19301) was diluted at 1:10000 and used to detect the primary antibody.



Sandwich ELISA: Influenza A H1N1 Nucleoprotein Antibody (GT1236) [NBP3-13493] - Sandwich ELISA detection of recombinant full-length Influenza A H1N1 Nucleoprotein, DDDDK tag using Influenza A H1N1 Nucleoprotein antibody (NBP2-16965) as capture antibody at concentration of 5 ug/mL and Influenza A H1N1 Nucleoprotein antibody [GT1236] (NBP3-13493) as detection antibody at concentration of 1 ug/mL. Mouse IgG antibody (HRP) (NBP2-19382) was diluted at 1:10000 and used to detect the primary antibody.



Sandwich ELISA: Influenza A H1N1 Nucleoprotein Antibody (GT1236) [NBP3-13493] - Sandwich ELISA detection of recombinant full-length Influenza A H1N1 Nucleoprotein, DDDDK tag using Influenza A H1N1 Nucleoprotein antibody [GT1236] (NBP3-13493) as capture antibody at concentration of 5 ug/mL and Influenza A H1N1 Nucleoprotein antibody (NBP2-16965) as detection antibody at concentration of 1 ug/mL. Rabbit IgG antibody (HRP) (NBP2-19301) was diluted at 1:10000 and used to detect the primary antibody.





### **Novus Biologicals USA**

10730 E. Briarwood Avenue  
Centennial, CO 80112  
USA  
Phone: 303.730.1950  
Toll Free: 1.888.506.6887  
Fax: 303.730.1966  
nb-customerservice@bio-techne.com

### **Bio-Techne Canada**

21 Canmotor Ave  
Toronto, ON M8Z 4E6  
Canada  
Phone: 905.827.6400  
Toll Free: 855.668.8722  
Fax: 905.827.6402  
canada.inquires@bio-techne.com

### **Bio-Techne Ltd**

19 Barton Lane  
Abingdon Science Park  
Abingdon, OX14 3NB, United Kingdom  
Phone: (44) (0) 1235 529449  
Free Phone: 0800 37 34 15  
Fax: (44) (0) 1235 533420  
info.EMEA@bio-techne.com

### **General Contact Information**

www.novusbio.com  
Technical Support: nb-technical@bio-  
techne.com  
Orders: nb-customerservice@bio-techne.com  
General: novus@novusbio.com

### **Products Related to NBP3-13493**

---

HAF007	Goat anti-Mouse IgG Secondary Antibody [HRP]
NB720-B	Rabbit anti-Mouse IgG (H+L) Secondary Antibody [Biotin]
NBP2-27231	Mouse IgG2b Isotype Control (MPC-11)

---

### **Limitations**

This product is for research use only and is not approved for use in humans or in clinical diagnosis. Primary Antibodies are guaranteed for 1 year from date of receipt.

For more information on our 100% guarantee, please visit [www.novusbio.com/guarantee](http://www.novusbio.com/guarantee)

Earn gift cards/discounts by submitting a review: [www.novusbio.com/reviews/submit/NBP3-13493](http://www.novusbio.com/reviews/submit/NBP3-13493)

Earn gift cards/discounts by submitting a publication using this product:  
[www.novusbio.com/publications](http://www.novusbio.com/publications)

