

Product Datasheet

CrkL [p Tyr207] Antibody NBP3-13318

Unit Size: 100 ul

Store at 4C short term. Aliquot and store at -20C long term. Avoid freeze-thaw cycles.

www.novusbio.com



technical@novusbio.com

Protocols, Publications, Related Products, Reviews, Research Tools and Images at:
www.novusbio.com/NBP3-13318

Updated 5/1/2024 v.20.1

Earn rewards for product
reviews and publications.

Submit a publication at www.novusbio.com/publications

Submit a review at www.novusbio.com/reviews/destination/NBP3-13318



NBP3-13318

CrkL [p Tyr207] Antibody

Product Information

| | |
|----------------------|--|
| Unit Size | 100 ul |
| Concentration | Concentrations vary lot to lot. See vial label for concentration. If unlisted please contact technical services. |
| Storage | Store at 4C short term. Aliquot and store at -20C long term. Avoid freeze-thaw cycles. |
| Clonality | Polyclonal |
| Preservative | 0.025% Proclin 300 |
| Isotype | IgG |
| Purity | Antigen Affinity-purified |
| Buffer | PBS (pH 7), 20% Glycerol, 1% BSA |

Product Description

| | |
|--------------------|---|
| Description | Centrifuge briefly prior to opening. |
| Host | Rabbit |
| Gene ID | 1399 |
| Gene Symbol | CRKL |
| Species | Human, Mouse, Rat |
| Immunogen | Carrier-protein conjugated synthetic peptide corresponding to residues around human CrkL (phospho Tyr207). The exact sequence is proprietary. |

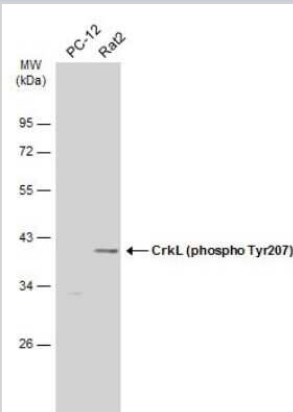
Product Application Details

| | |
|------------------------------|--------------|
| Applications | Western Blot |
| Recommended Dilutions | Western Blot |

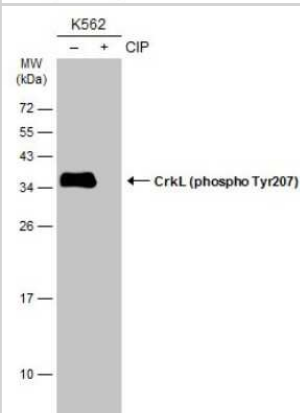


Images

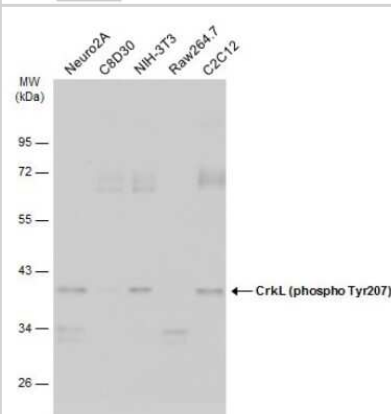
Western Blot: CrkL [p Tyr207] Antibody [NBP3-13318] - Various whole cell extracts (30 ug) were separated by 10% SDS-PAGE, and the membrane was blotted with CrkL (phospho Tyr207) antibody (NBP3-13318) diluted at 1:500. The HRP-conjugated anti-rabbit IgG antibody (NBP2-19301) was used to detect the primary antibody.



Western Blot: CrkL [p Tyr207] Antibody [NBP3-13318] - Untreated (-) and treated (+) K562 whole cell extracts (30 ug) were separated by 12% SDS-PAGE, and the membrane was blotted with CrkL (phospho Tyr207) antibody (NBP3-13318) diluted at 1:1000. The HRP-conjugated anti-rabbit IgG antibody (NBP2-19301) was used to detect the primary antibody.



Western Blot: CrkL [p Tyr207] Antibody [NBP3-13318] - Various whole cell extracts (30 ug) were separated by 10% SDS-PAGE, and the membrane was blotted with CrkL (phospho Tyr207) antibody (NBP3-13318) diluted at 1:500. The HRP-conjugated anti-rabbit IgG antibody (NBP2-19301) was used to detect the primary antibody.





Novus Biologicals USA

10730 E. Briarwood Avenue
Centennial, CO 80112
USA
Phone: 303.730.1950
Toll Free: 1.888.506.6887
Fax: 303.730.1966
nb-customerservice@bio-techne.com

Bio-Techne Canada

21 Canmotor Ave
Toronto, ON M8Z 4E6
Canada
Phone: 905.827.6400
Toll Free: 855.668.8722
Fax: 905.827.6402
canada.inquires@bio-techne.com

Bio-Techne Ltd

19 Barton Lane
Abingdon Science Park
Abingdon, OX14 3NB, United Kingdom
Phone: (44) (0) 1235 529449
Free Phone: 0800 37 34 15
Fax: (44) (0) 1235 533420
info.EMEA@bio-techne.com

General Contact Information

www.novusbio.com
Technical Support: nb-technical@bio-techne.com
Orders: nb-customerservice@bio-techne.com
General: novus@novusbio.com

Products Related to NBP3-13318

| | |
|------------------|---|
| HAF008 | Goat anti-Rabbit IgG Secondary Antibody [HRP] |
| NB7160 | Goat anti-Rabbit IgG (H+L) Secondary Antibody [HRP] |
| NBP2-24891 | Rabbit IgG Isotype Control |
| NBP1-50941-0.1mg | Recombinant Human CrkL His Protein |

Limitations

This product is for research use only and is not approved for use in humans or in clinical diagnosis. Primary Antibodies are guaranteed for 1 year from date of receipt.

For more information on our 100% guarantee, please visit www.novusbio.com/guarantee

Earn gift cards/discounts by submitting a review: www.novusbio.com/reviews/submit/NBP3-13318

Earn gift cards/discounts by submitting a publication using this product:
www.novusbio.com/publications

