

Product Datasheet

Phospholipase C beta 2 Antibody NBP3-13288

Unit Size: 100 ul

Store at 4C short term. Aliquot and store at -20C long term. Avoid freeze-thaw cycles.

www.novusbio.com



technical@novusbio.com

Protocols, Publications, Related Products, Reviews, Research Tools and Images at:
www.novusbio.com/NBP3-13288

Updated 6/28/2023 v.20.1

Earn rewards for product
reviews and publications.

Submit a publication at www.novusbio.com/publications

Submit a review at www.novusbio.com/reviews/destination/NBP3-13288



NBP3-13288

Phospholipase C beta 2 Antibody

| Product Information | |
|--------------------------------|--|
| Unit Size | 100 ul |
| Concentration | Concentrations vary lot to lot. See vial label for concentration. If unlisted please contact technical services. |
| Storage | Store at 4C short term. Aliquot and store at -20C long term. Avoid freeze-thaw cycles. |
| Clonality | Polyclonal |
| Preservative | 0.025% Proclin 300 |
| Isotype | IgG |
| Purity | Antigen Affinity-purified |
| Buffer | PBS, 20% Glycerol (pH7) |
| Target Molecular Weight | 134 kDa |

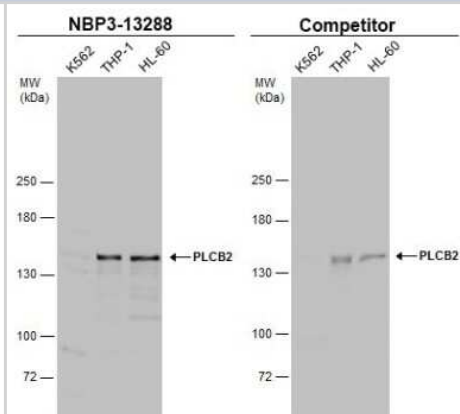
| Product Description | |
|---------------------|--|
| Description | Centrifuge briefly prior to opening. |
| Host | Rabbit |
| Gene Symbol | PLCB2 |
| Species | Human, Mouse |
| Immunogen | Recombinant protein encompassing a sequence within the C-terminus region of human Phospholipase C beta 2. The exact sequence is proprietary. |

| Product Application Details | |
|------------------------------|---|
| Applications | Western Blot, Immunocytochemistry/ Immunofluorescence, Immunohistochemistry, Immunohistochemistry-Frozen, Immunohistochemistry-Paraffin |
| Recommended Dilutions | Western Blot 1:500-1:3000, Immunohistochemistry 1:100-1:1000, Immunocytochemistry/ Immunofluorescence 1:100-1:1000, Immunohistochemistry-Paraffin 1:100-1:1000, Immunohistochemistry-Frozen |
| Application Notes | IHC-Fr Assay dependent |

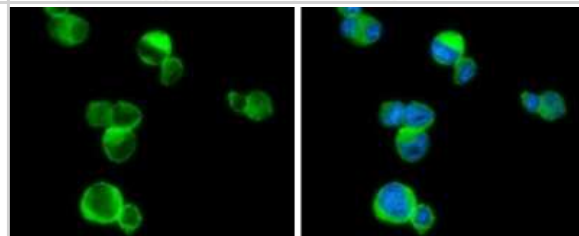


Images

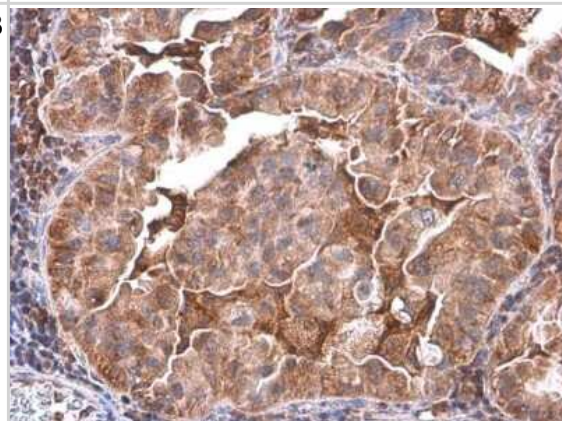
Western Blot: Phospholipase C beta 2 Antibody [NBP3-13288] - Various whole cell extracts (30 ug) were separated by 5% SDS-PAGE, and the membranes were blotted with Phospholipase C beta 2 antibody (NBP3-13288) diluted at 1:1000 and competitor's antibody diluted at 1:100. The HRP-conjugated anti-rabbit IgG antibody (NBP2-19301) was used to detect the primary antibody.



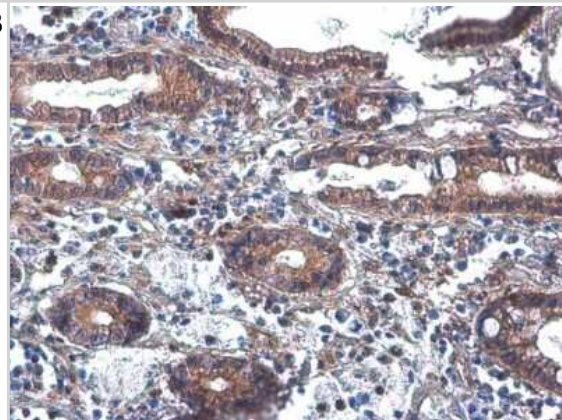
Immunocytochemistry/Immunofluorescence: Phospholipase C beta 2 Antibody [NBP3-13288] - Phospholipase C beta 2 antibody detects Phospholipase C beta 2 protein at cytoplasm by immunofluorescent analysis. Sample: THP-1 cells were fixed in 4% paraformaldehyde at RT for 15 min. Green: Phospholipase C beta 2 stained by Phospholipase C beta 2 antibody (NBP3-13288) diluted at 1:500. Blue: Fluoroshield with DAPI.



Immunohistochemistry-Paraffin: Phospholipase C beta 2 Antibody [NBP3-13288] - Human lung cancer. Phospholipase C beta 2 stained by Phospholipase C beta 2 antibody (NBP3-13288) diluted at 1:500. Antigen Retrieval: Citrate buffer, pH 6.0, 15 min



Immunohistochemistry-Paraffin: Phospholipase C beta 2 Antibody [NBP3-13288] - Human colon cancer. Phospholipase C beta 2 stained by Phospholipase C beta 2 antibody (NBP3-13288) diluted at 1:500. Antigen Retrieval: Citrate buffer, pH 6.0, 15 min





Novus Biologicals USA

10730 E. Briarwood Avenue
Centennial, CO 80112
USA
Phone: 303.730.1950
Toll Free: 1.888.506.6887
Fax: 303.730.1966
nb-customerservice@bio-techne.com

Bio-Techne Canada

21 Canmotor Ave
Toronto, ON M8Z 4E6
Canada
Phone: 905.827.6400
Toll Free: 855.668.8722
Fax: 905.827.6402
canada.inquires@bio-techne.com

Bio-Techne Ltd

19 Barton Lane
Abingdon Science Park
Abingdon, OX14 3NB, United Kingdom
Phone: (44) (0) 1235 529449
Free Phone: 0800 37 34 15
Fax: (44) (0) 1235 533420
info.EMEA@bio-techne.com

General Contact Information

www.novusbio.com
Technical Support: nb-technical@bio-techne.com
Orders: nb-customerservice@bio-techne.com
General: novus@novusbio.com

Products Related to NBP3-13288

| | |
|--------------------|---|
| HAF008 | Goat anti-Rabbit IgG Secondary Antibody [HRP] |
| NB7160 | Goat anti-Rabbit IgG (H+L) Secondary Antibody [HRP] |
| NBP2-24891 | Rabbit IgG Isotype Control |
| H00005330-P01-10ug | Recombinant Human Phospholipase C beta 2 GST (N-Term) Protein |

Limitations

This product is for research use only and is not approved for use in humans or in clinical diagnosis. Primary Antibodies are guaranteed for 1 year from date of receipt.

For more information on our 100% guarantee, please visit www.novusbio.com/guarantee

Earn gift cards/discounts by submitting a review: www.novusbio.com/reviews/submit/NBP3-13288

Earn gift cards/discounts by submitting a publication using this product:
www.novusbio.com/publications

