

Product Datasheet

PLC-gamma 2 [p Tyr1217] Antibody NBP3-13270

Unit Size: 100 ul

Store at 4C short term. Aliquot and store at -20C long term. Avoid freeze-thaw cycles.

www.novusbio.com



technical@novusbio.com

Protocols, Publications, Related Products, Reviews, Research Tools and Images at:
www.novusbio.com/NBP3-13270

Updated 5/1/2024 v.20.1

Earn rewards for product
reviews and publications.

Submit a publication at www.novusbio.com/publications

Submit a review at www.novusbio.com/reviews/destination/NBP3-13270



NBP3-13270**PLC-gamma 2 [p Tyr1217] Antibody**

Product Information	
Unit Size	100 ul
Concentration	Concentrations vary lot to lot. See vial label for concentration. If unlisted please contact technical services.
Storage	Store at 4C short term. Aliquot and store at -20C long term. Avoid freeze-thaw cycles.
Clonality	Polyclonal
Preservative	0.025% Proclin 300
Isotype	IgG
Purity	Antigen Affinity-purified
Buffer	PBS (pH 7), 20% Glycerol, 1% BSA

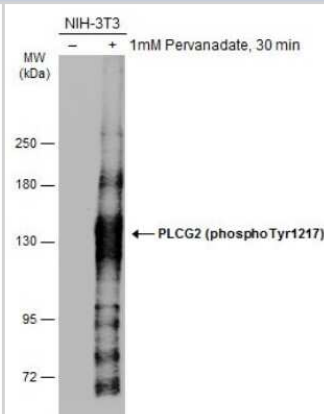
Product Description	
Description	Centrifuge briefly prior to opening.
Host	Rabbit
Gene ID	5336
Gene Symbol	PLCG2
Species	Human, Mouse
Immunogen	Carrier-protein conjugated synthetic peptide corresponding to residues around human PLC-gamma 2 (phospho Tyr1217). The exact sequence is proprietary.

Product Application Details	
Applications	Western Blot
Recommended Dilutions	Western Blot

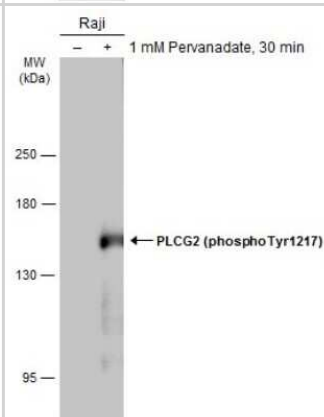


Images

Western Blot: PLC-gamma 2 [p Tyr1217] Antibody [NBP3-13270] - Untreated (-) and treated (+) NIH-3T3 whole cell extracts (10 ug) were separated by 5% SDS-PAGE, and the membrane was blotted with PLC-gamma 2 (phospho Tyr1217) antibody (NBP3-13270) diluted at 1:1000. The HRP-conjugated anti-rabbit IgG antibody (NBP2-19301) was used to detect the primary antibody.



Western Blot: PLC-gamma 2 [p Tyr1217] Antibody [NBP3-13270] - Untreated (-) and treated (+) Raji whole cell extract (10 ug) were separated by 7.5% SDS-PAGE, and the membrane was blotted with PLC-gamma 2 (phospho Tyr1217) antibody (NBP3-13270) diluted at 1:1000. The HRP-conjugated anti-rabbit IgG antibody (NBP2-19301) was used to detect the primary antibody.





Novus Biologicals USA

10730 E. Briarwood Avenue
Centennial, CO 80112
USA
Phone: 303.730.1950
Toll Free: 1.888.506.6887
Fax: 303.730.1966
nb-customerservice@bio-techne.com

Bio-Techne Canada

21 Canmotor Ave
Toronto, ON M8Z 4E6
Canada
Phone: 905.827.6400
Toll Free: 855.668.8722
Fax: 905.827.6402
canada.inquires@bio-techne.com

Bio-Techne Ltd

19 Barton Lane
Abingdon Science Park
Abingdon, OX14 3NB, United Kingdom
Phone: (44) (0) 1235 529449
Free Phone: 0800 37 34 15
Fax: (44) (0) 1235 533420
info.EMEA@bio-techne.com

General Contact Information

www.novusbio.com
Technical Support: nb-technical@bio-
techne.com
Orders: nb-customerservice@bio-techne.com
General: novus@novusbio.com

Products Related to NBP3-13270

HAF008	Goat anti-Rabbit IgG Secondary Antibody [HRP]
NB7160	Goat anti-Rabbit IgG (H+L) Secondary Antibody [HRP]
NBP2-24891	Rabbit IgG Isotype Control
NBP1-86030PEP	PLC-gamma 2 Recombinant Protein Antigen

Limitations

This product is for research use only and is not approved for use in humans or in clinical diagnosis. Primary Antibodies are guaranteed for 1 year from date of receipt.

For more information on our 100% guarantee, please visit www.novusbio.com/guarantee

Earn gift cards/discounts by submitting a review: www.novusbio.com/reviews/submit/NBP3-13270

Earn gift cards/discounts by submitting a publication using this product:
www.novusbio.com/publications

