

Product Datasheet

KCC2/SLC12A5 Antibody NBP3-13161

Unit Size: 100 ul

Store at 4C short term. Aliquot and store at -20C long term. Avoid freeze-thaw cycles.

www.novusbio.com



technical@novusbio.com

Protocols, Publications, Related Products, Reviews, Research Tools and Images at:
www.novusbio.com/NBP3-13161

Updated 8/28/2023 v.20.1

Earn rewards for product
reviews and publications.

Submit a publication at www.novusbio.com/publications

Submit a review at www.novusbio.com/reviews/destination/NBP3-13161



NBP3-13161**KCC2/SLC12A5 Antibody****Product Information**

Unit Size	100 ul
Concentration	Concentrations vary lot to lot. See vial label for concentration. If unlisted please contact technical services.
Storage	Store at 4C short term. Aliquot and store at -20C long term. Avoid freeze-thaw cycles.
Clonality	Polyclonal
Preservative	0.025% Proclin 300
Isotype	IgG
Purity	Antigen Affinity-purified
Buffer	PBS, 20% Glycerol (pH7)
Target Molecular Weight	126 kDa

Product Description

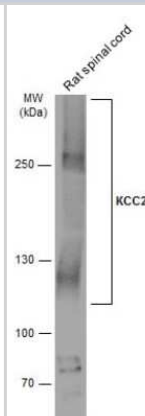
Description	Centrifuge briefly prior to opening.
Host	Rabbit
Gene Symbol	SLC12A5
Species	Human, Mouse, Rat
Immunogen	Carrier-protein conjugated synthetic peptide encompassing a sequence within the C-terminus region of mouse KCC2/SLC12A5. The exact sequence is proprietary.

Product Application Details

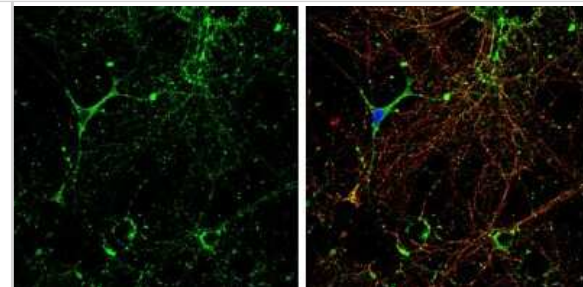
Applications	Western Blot, Immunocytochemistry/ Immunofluorescence, Immunohistochemistry, Immunohistochemistry-Paraffin
Recommended Dilutions	Western Blot 1:500-1:10000, Immunohistochemistry 1:100-1:1000, Immunocytochemistry/ Immunofluorescence 1:100-1:1000, Immunohistochemistry-Paraffin 1:100-1:1000

Images

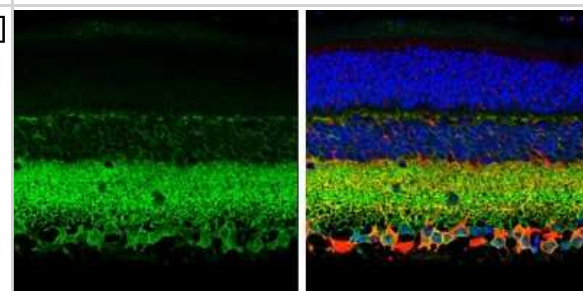
Western Blot: KCC2/SLC12A5 Antibody [NBP3-13161] - Rat tissue extract (50 ug) was separated by 5% SDS-PAGE, and the membrane was blotted with KCC2/SLC12A5 antibody (NBP3-13161) diluted at 1:5000. The HRP-conjugated anti-rabbit IgG antibody (NBP2-19301) was used to detect the primary antibody.



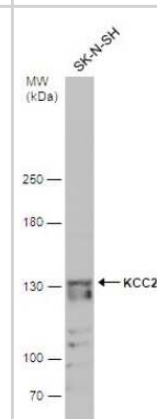
Immunocytochemistry/Immunofluorescence: KCC2/SLC12A5 Antibody [NBP3-13161] - KCC2/SLC12A5 antibody detects KCC2/SLC12A5 protein by immunofluorescent analysis. Sample: DIV10 rat E18 primary hippocampal neurons were fixed in 4% paraformaldehyde at RT for 15 min. Green: KCC2/SLC12A5 protein stained by KCC2/SLC12A5 antibody (NBP3-13161) diluted at 1:500. Red: beta Tubulin 3/ Tuj1, stained by beta Tubulin 3/ Tuj1 antibody [GT1338] (NBP3-13505) diluted at 1:500. Blue: Fluoroshield with DAPI.



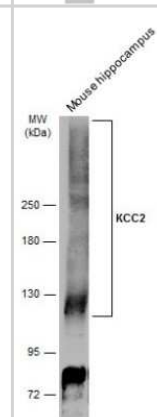
Immunohistochemistry-Paraffin: KCC2/SLC12A5 Antibody [NBP3-13161] - KCC2/SLC12A5 antibody detects KCC2/SLC12A5 protein expression by immunohistochemical analysis. Sample: Paraffin-Embedded adult mouse retina. Green: KCC2/SLC12A5 protein stained by KCC2/SLC12A5 antibody (NBP3-13161) diluted at 1:250. Red: beta Tubulin 3/ TUJ1, stained by beta Tubulin 3/ TUJ1 antibody [GT11710] (NBP2-43559) diluted at 1:500. Blue: Fluoroshield with DAPI.



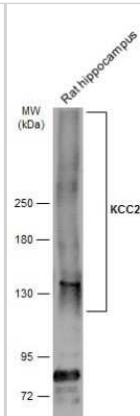
Western Blot: KCC2/SLC12A5 Antibody [NBP3-13161] - Whole cell extract (30 ug) was separated by 5% SDS-PAGE, and the membrane was blotted with KCC2/SLC12A5 antibody (NBP3-13161) diluted at 1:500.



Western Blot: KCC2/SLC12A5 Antibody [NBP3-13161] - Mouse tissue extract (50 ug) was separated by 5% SDS-PAGE, and the membrane was blotted with KCC2/SLC12A5 antibody (NBP3-13161) diluted at 1:5000. The HRP-conjugated anti-rabbit IgG antibody (NBP2-19301) was used to detect the primary antibody.



Western Blot: KCC2/SLC12A5 Antibody [NBP3-13161] - Rat tissue extract (50 ug) was separated by 5% SDS-PAGE, and the membrane was blotted with KCC2/SLC12A5 antibody (NBP3-13161) diluted at 1:5000. The HRP-conjugated anti-rabbit IgG antibody (NBP2-19301) was used to detect the primary antibody.





Novus Biologicals USA

10730 E. Briarwood Avenue
Centennial, CO 80112
USA
Phone: 303.730.1950
Toll Free: 1.888.506.6887
Fax: 303.730.1966
nb-customerservice@bio-techne.com

Bio-Techne Canada

21 Canmotor Ave
Toronto, ON M8Z 4E6
Canada
Phone: 905.827.6400
Toll Free: 855.668.8722
Fax: 905.827.6402
canada.inquires@bio-techne.com

Bio-Techne Ltd

19 Barton Lane
Abingdon Science Park
Abingdon, OX14 3NB, United Kingdom
Phone: (44) (0) 1235 529449
Free Phone: 0800 37 34 15
Fax: (44) (0) 1235 533420
info.EMEA@bio-techne.com

General Contact Information

www.novusbio.com
Technical Support: nb-technical@bio-techne.com
Orders: nb-customerservice@bio-techne.com
General: novus@novusbio.com

Products Related to NBP3-13161

HAF008	Goat anti-Rabbit IgG Secondary Antibody [HRP]
NB7160	Goat anti-Rabbit IgG (H+L) Secondary Antibody [HRP]
NBP2-24891	Rabbit IgG Isotype Control
NBP2-49674PEP	KCC2/SLC12A5 Recombinant Protein Antigen

Limitations

This product is for research use only and is not approved for use in humans or in clinical diagnosis. Primary Antibodies are guaranteed for 1 year from date of receipt.

For more information on our 100% guarantee, please visit www.novusbio.com/guarantee

Earn gift cards/discounts by submitting a review: www.novusbio.com/reviews/submit/NBP3-13161

Earn gift cards/discounts by submitting a publication using this product:
www.novusbio.com/publications

