

Product Datasheet

Japanese Encephalitis virus prM Antibody NBP3-13043

Unit Size: 100 ul

Store at 4C short term. Aliquot and store at -20C long term. Avoid freeze-thaw cycles.

www.novusbio.com



technical@novusbio.com

Protocols, Publications, Related Products, Reviews, Research Tools and Images at:
www.novusbio.com/NBP3-13043

Updated 5/1/2024 v.20.1

Earn rewards for product
reviews and publications.

Submit a publication at www.novusbio.com/publications

Submit a review at www.novusbio.com/reviews/destination/NBP3-13043



NBP3-13043**Japanese Encephalitis virus prM Antibody**

Product Information	
Unit Size	100 ul
Concentration	Concentrations vary lot to lot. See vial label for concentration. If unlisted please contact technical services.
Storage	Store at 4C short term. Aliquot and store at -20C long term. Avoid freeze-thaw cycles.
Clonality	Polyclonal
Preservative	0.025% Proclin 300
Isotype	IgG
Purity	Antigen Affinity-purified
Buffer	PBS (pH 7), 20% Glycerol, 1% BSA

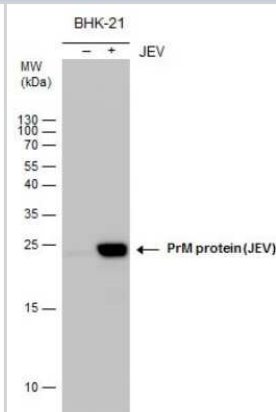
Product Description	
Description	Centrifuge briefly prior to opening.
Host	Rabbit
Species	Virus
Reactivity Notes	Japanese encephalitis virus
Immunogen	Recombinant protein encompassing a sequence within the center region of prM protein (JEV). (Japanese Encephalitis Virus strain Jaoars982) The exact sequence is proprietary.

Product Application Details	
Applications	Western Blot, Immunocytochemistry/ Immunofluorescence
Recommended Dilutions	Western Blot, Immunocytochemistry/ Immunofluorescence

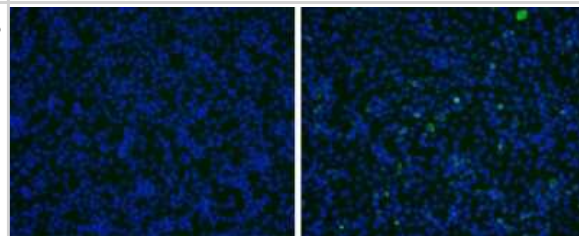


Images

Western Blot: Japanese Encephalitis virus prM Antibody [NBP3-13043] - PrM protein (JEV) antibody detects PrM protein (JEV) protein by western blot analysis. Un-infected (-) and infected (+, JEV infection) BHK-21 whole cell extracts (20 ug) were separated by 15% SDS-PAGE, and the membrane was blotted with PrM protein (JEV) antibody (NBP3-13043) at a dilution of 1:1000.



Immunocytochemistry/Immunofluorescence: Japanese Encephalitis virus prM Antibody [NBP3-13043] - prM protein (Japanese encephalitis virus) antibody detects prM protein (Japanese encephalitis virus) by immunofluorescence analysis. Samples: BHK-21 cells mock (left) and infected with Japanese encephalitis virus (right) were fixed in methanol/acetone. Green: prM protein (Japanese encephalitis virus) stained by prM protein (Japanese encephalitis virus) antibody (NBP3-13043) diluted at 1:1000. Blue: Hoechst 33342 staining.





Novus Biologicals USA

10730 E. Briarwood Avenue
Centennial, CO 80112
USA
Phone: 303.730.1950
Toll Free: 1.888.506.6887
Fax: 303.730.1966
nb-customerservice@bio-techne.com

Bio-Techne Canada

21 Canmotor Ave
Toronto, ON M8Z 4E6
Canada
Phone: 905.827.6400
Toll Free: 855.668.8722
Fax: 905.827.6402
canada.inquires@bio-techne.com

Bio-Techne Ltd

19 Barton Lane
Abingdon Science Park
Abingdon, OX14 3NB, United Kingdom
Phone: (44) (0) 1235 529449
Free Phone: 0800 37 34 15
Fax: (44) (0) 1235 533420
info.EMEA@bio-techne.com

General Contact Information

www.novusbio.com
Technical Support: nb-technical@bio-
techne.com
Orders: nb-customerservice@bio-techne.com
General: novus@novusbio.com

Products Related to NBP3-13043

HAF008	Goat anti-Rabbit IgG Secondary Antibody [HRP]
NB7160	Goat anti-Rabbit IgG (H+L) Secondary Antibody [HRP]
NBP2-24891	Rabbit IgG Isotype Control

Limitations

This product is for research use only and is not approved for use in humans or in clinical diagnosis. Primary Antibodies are guaranteed for 1 year from date of receipt.

For more information on our 100% guarantee, please visit www.novusbio.com/guarantee

Earn gift cards/discounts by submitting a review: www.novusbio.com/reviews/submit/NBP3-13043

Earn gift cards/discounts by submitting a publication using this product:
www.novusbio.com/publications

