

# Product Datasheet

## **EPRS Antibody** **NBP3-12962**

Unit Size: 100 ul

Store at 4C short term. Aliquot and store at -20C long term. Avoid freeze-thaw cycles.

[www.novusbio.com](http://www.novusbio.com)



[technical@novusbio.com](mailto:technical@novusbio.com)

Protocols, Publications, Related Products, Reviews, Research Tools and Images at:  
[www.novusbio.com/NBP3-12962](http://www.novusbio.com/NBP3-12962)

Updated 10/7/2024 v.20.1

**Earn rewards for product  
reviews and publications.**

Submit a publication at [www.novusbio.com/publications](http://www.novusbio.com/publications)

Submit a review at [www.novusbio.com/reviews/destination/NBP3-12962](http://www.novusbio.com/reviews/destination/NBP3-12962)



**NBP3-12962**

## EPRS Antibody

Product Information	
Unit Size	100 ul
Concentration	Concentrations vary lot to lot. See vial label for concentration. If unlisted please contact technical services.
Storage	Store at 4C short term. Aliquot and store at -20C long term. Avoid freeze-thaw cycles.
Clonality	Polyclonal
Preservative	0.025% Proclin 300
Isotype	IgG
Purity	Antigen Affinity-purified
Buffer	PBS (pH 7), 20% Glycerol

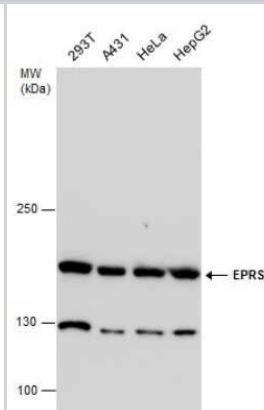
Product Description	
Description	Centrifuge briefly prior to opening.
Host	Rabbit
Gene ID	2058
Gene Symbol	EPRS1
Species	Human, Mouse, Rat, Drosophila
Reactivity Notes	Mouse (86%), Rat (83%), Chicken (84%)
Immunogen	Recombinant protein encompassing a sequence within the C-terminus region of human EPRS. The exact sequence is proprietary.

Product Application Details	
Applications	Western Blot, Immunohistochemistry, Immunohistochemistry-Paraffin, Immunoprecipitation, Immunohistochemistry Whole-Mount
Recommended Dilutions	Western Blot, Immunohistochemistry, Immunoprecipitation, Immunohistochemistry-Paraffin 1:100-1:1000, Immunohistochemistry Whole-Mount

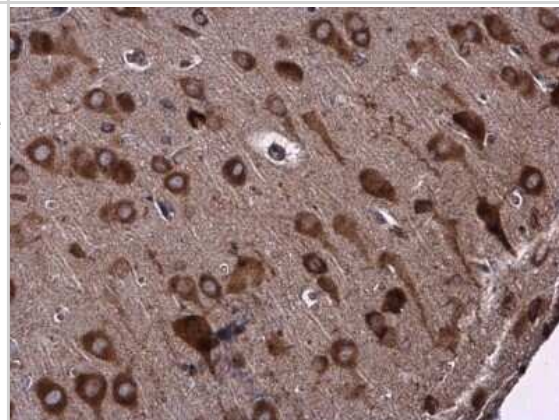


## Images

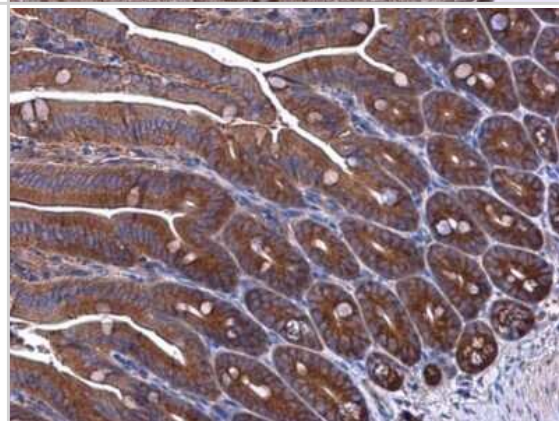
**Western Blot: EPRS Antibody [NBP3-12962]** - EPRS antibody detects EPRS protein by western blot analysis. Various whole cell extracts (30 ug) were separated by 5% SDS-PAGE, and the membrane was blotted with EPRS antibody (NBP3-12962) diluted at a dilution of 1:1000.



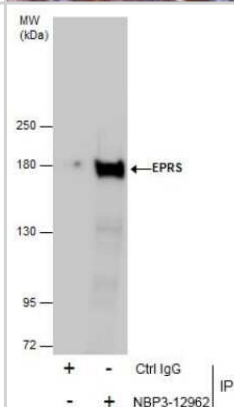
**Immunohistochemistry-Paraffin: EPRS Antibody [NBP3-12962]** - EPRS antibody detects EPRS protein at cytoplasm in rat brain by immunohistochemical analysis. Sample: Paraffin-embedded rat brain. EPRS antibody (NBP3-12962) diluted at 1:500. Antigen Retrieval: Citrate buffer, pH 6.0, 15 min



**Immunohistochemistry-Paraffin: EPRS Antibody [NBP3-12962]** - EPRS antibody detects EPRS protein at cytoplasm in mouse intestine by immunohistochemical analysis. Sample: Paraffin-embedded mouse intestine. EPRS antibody (NBP3-12962) diluted at 1:500. Antigen Retrieval: Citrate buffer, pH 6.0, 15 min



**Immunoprecipitation: EPRS Antibody [NBP3-12962]** - Immunoprecipitation of EPRS protein from 293T whole cell extracts using 5 ug of EPRS antibody (NBP3-12962). Western blot analysis was performed using EPRS antibody (NBP3-12962) diluted at 1:2500. EasyBlot anti-Rabbit IgG was used as a secondary reagent.





### **Novus Biologicals USA**

10730 E. Briarwood Avenue  
Centennial, CO 80112  
USA  
Phone: 303.730.1950  
Toll Free: 1.888.506.6887  
Fax: 303.730.1966  
nb-customerservice@bio-techne.com

### **Bio-Techne Canada**

21 Canmotor Ave  
Toronto, ON M8Z 4E6  
Canada  
Phone: 905.827.6400  
Toll Free: 855.668.8722  
Fax: 905.827.6402  
canada.inquires@bio-techne.com

### **Bio-Techne Ltd**

19 Barton Lane  
Abingdon Science Park  
Abingdon, OX14 3NB, United Kingdom  
Phone: (44) (0) 1235 529449  
Free Phone: 0800 37 34 15  
Fax: (44) (0) 1235 533420  
info.EMEA@bio-techne.com

### **General Contact Information**

www.novusbio.com  
Technical Support: nb-technical@bio-techne.com  
Orders: nb-customerservice@bio-techne.com  
General: novus@novusbio.com

### **Products Related to NBP3-12962**

---

HAF008	Goat anti-Rabbit IgG Secondary Antibody [HRP]
NB7160	Goat anti-Rabbit IgG (H+L) Secondary Antibody [HRP]
NBP2-24891	Rabbit IgG Isotype Control
NBP1-84930PEP	EPRS Recombinant Protein Antigen

---

### **Limitations**

This product is for research use only and is not approved for use in humans or in clinical diagnosis. Primary Antibodies are guaranteed for 1 year from date of receipt.

For more information on our 100% guarantee, please visit [www.novusbio.com/guarantee](http://www.novusbio.com/guarantee)

Earn gift cards/discounts by submitting a review: [www.novusbio.com/reviews/submit/NBP3-12962](http://www.novusbio.com/reviews/submit/NBP3-12962)

Earn gift cards/discounts by submitting a publication using this product:  
[www.novusbio.com/publications](http://www.novusbio.com/publications)

