

# Product Datasheet

## Chordin-like 1/CHRD1 Antibody - BSA Free NBP3-12874

Unit Size: 100 ul

Store at 4C short term. Aliquot and store at -20C long term. Avoid freeze-thaw cycles.

[www.novusbio.com](http://www.novusbio.com)



[technical@novusbio.com](mailto:technical@novusbio.com)

Protocols, Publications, Related Products, Reviews, Research Tools and Images at:  
[www.novusbio.com/NBP3-12874](http://www.novusbio.com/NBP3-12874)

Updated 3/3/2025 v.20.1

Earn rewards for product  
reviews and publications.

Submit a publication at [www.novusbio.com/publications](http://www.novusbio.com/publications)

Submit a review at [www.novusbio.com/reviews/destination/NBP3-12874](http://www.novusbio.com/reviews/destination/NBP3-12874)



**NBP3-12874**

Chordin-like 1/CHRD1 Antibody - BSA Free

**Product Information**

<b>Unit Size</b>	100 ul
<b>Concentration</b>	Concentrations vary lot to lot. See vial label for concentration. If unlisted please contact technical services.
<b>Storage</b>	Store at 4C short term. Aliquot and store at -20C long term. Avoid freeze-thaw cycles.
<b>Clonality</b>	Polyclonal
<b>Preservative</b>	0.025% Proclin 300
<b>Isotype</b>	IgG
<b>Purity</b>	Antigen Affinity-purified
<b>Buffer</b>	PBS (pH 7), 20% Glycerol

**Product Description**

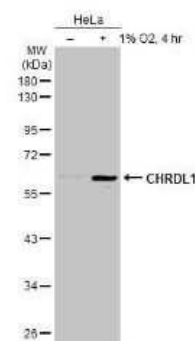
<b>Description</b>	Centrifuge briefly prior to opening.
<b>Host</b>	Rabbit
<b>Gene ID</b>	91851
<b>Gene Symbol</b>	CHRD1
<b>Species</b>	Human, Mouse
<b>Reactivity Notes</b>	Chicken (80%)
<b>Immunogen</b>	Recombinant protein encompassing a sequence within the center region of human Chordin-like 1/CHRD1. The exact sequence is proprietary.

**Product Application Details**

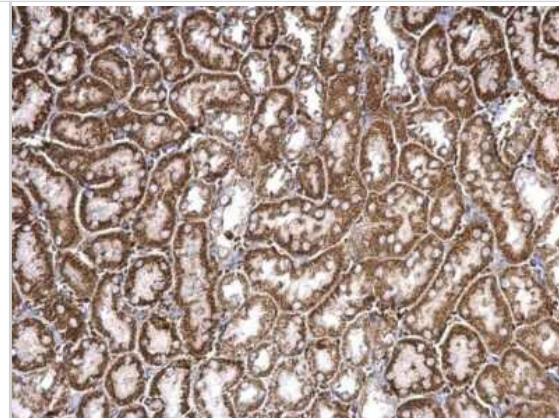
<b>Applications</b>	Western Blot, Immunohistochemistry-Paraffin, Immunohistochemistry
<b>Recommended Dilutions</b>	Western Blot, Immunohistochemistry, Immunohistochemistry-Paraffin

**Images**

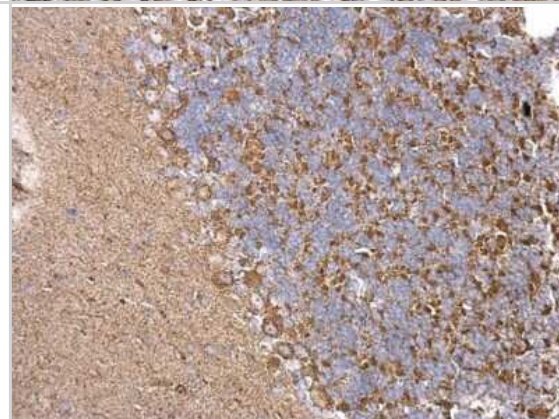
Western Blot: Chordin-like 1/CHRD1 Antibody [NBP3-12874] - Untreated (-) and treated (+) HeLa whole cell extracts (30 ug) were separated by 10% SDS-PAGE, and the membrane was blotted with Chordin-like 1/CHRD1 antibody (NBP3-12874) diluted at 1:1000. The HRP-conjugated anti-rabbit IgG antibody (NBP2-19301) was used to detect the primary antibody.



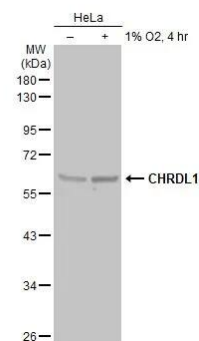
**Immunohistochemistry-Paraffin: Chordin-like 1/CHRDL1 Antibody [NBP3-12874]** - Chordin-like 1/CHRDL1 antibody detects Chordin-like 1/CHRDL1 protein at cytosol on mouse kidney by immunohistochemical analysis. Sample: Paraffin-embedded mouse kidney. Chordin-like 1/CHRDL1 antibody (NBP3-12874) dilution: 1:500. Antigen Retrieval: Trilogy(TM) (EDTA based, pH 8.0) buffer, 15min



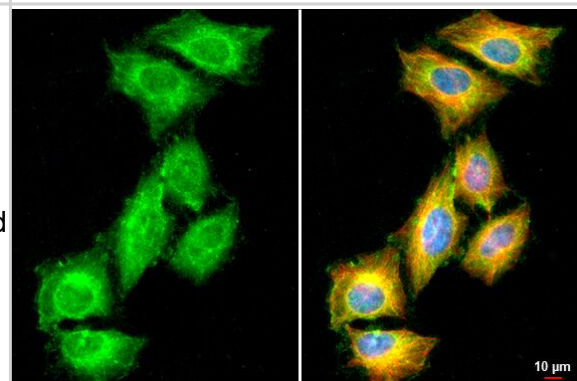
**Immunohistochemistry-Paraffin: Chordin-like 1/CHRDL1 Antibody [NBP3-12874]** - Chordin-like 1/CHRDL1 antibody detects Chordin-like 1/CHRDL1 protein at cytosol on mouse hind brain by immunohistochemical analysis. Sample: Paraffin-embedded mouse hind brain. Chordin-like 1/CHRDL1 antibody (NBP3-12874) dilution: 1:500. Antigen Retrieval: Trilogy(TM) (EDTA based, pH 8.0) buffer, 15min



**Western Blot: Chordin-like 1/CHRDL1 Antibody [NBP3-12874]** - Untreated (-) and treated (+) HeLa whole cell extracts (30 ug) were separated by 10% SDS-PAGE, and the membrane was blotted with Chordin-like 1/CHRDL1 antibody (NBP3-12874) diluted at 1:5000. The HRP-conjugated anti-rabbit IgG antibody was used to detect the primary antibody.



**Immunocytochemistry/ Immunofluorescence: Chordin-like 1/CHRDL1 Antibody [NBP3-12874]** - Chordin-like 1/CHRDL1 antibody detects Chordin-like 1/CHRDL1 protein at cytoplasm by immunofluorescent analysis. Sample: HeLa cells were fixed in 4% paraformaldehyde at RT for 15 min. Green: Chordin-like 1/CHRDL1 stained by Chordin-like 1/CHRDL1 antibody (NBP3-12874) diluted at 1:500. Red: alpha Tubulin, a cytoskeleton marker, stained by alpha Tubulin antibody [GT114] diluted at 1:1000. Blue: Fluoroshield with DAPI. Scale bar= 10um.





### **Novus Biologicals USA**

10730 E. Briarwood Avenue  
Centennial, CO 80112  
USA  
Phone: 303.730.1950  
Toll Free: 1.888.506.6887  
Fax: 303.730.1966  
nb-customerservice@bio-techne.com

### **Bio-Techne Canada**

21 Canmotor Ave  
Toronto, ON M8Z 4E6  
Canada  
Phone: 905.827.6400  
Toll Free: 855.668.8722  
Fax: 905.827.6402  
canada.inquires@bio-techne.com

### **Bio-Techne Ltd**

19 Barton Lane  
Abingdon Science Park  
Abingdon, OX14 3NB, United Kingdom  
Phone: (44) (0) 1235 529449  
Free Phone: 0800 37 34 15  
Fax: (44) (0) 1235 533420  
info.EMEA@bio-techne.com

### **General Contact Information**

[www.novusbio.com](http://www.novusbio.com)  
Technical Support: nb-technical@bio-techne.com  
Orders: nb-customerservice@bio-techne.com  
General: novus@novusbio.com

### **Products Related to NBP3-12874**

---

HAF008	Goat anti-Rabbit IgG Secondary Antibody [HRP]
NB7160	Goat anti-Rabbit IgG (H+L) Secondary Antibody [HRP]
NBP2-24891	Rabbit IgG Isotype Control
NBP1-84486PEP	Chordin-like 1/CHRD1 Recombinant Protein Antigen

---

### **Limitations**

This product is for research use only and is not approved for use in humans or in clinical diagnosis. Primary Antibodies are guaranteed for 1 year from date of receipt.

For more information on our 100% guarantee, please visit [www.novusbio.com/guarantee](http://www.novusbio.com/guarantee)

Earn gift cards/discounts by submitting a review: [www.novusbio.com/reviews/submit/NBP3-12874](http://www.novusbio.com/reviews/submit/NBP3-12874)

Earn gift cards/discounts by submitting a publication using this product:  
[www.novusbio.com/publications](http://www.novusbio.com/publications)

