

# Product Datasheet

## **T Cell Exhaustion Marker (Flow-Directly Conjugated) Antibody Pack NBP3-12863**

Unit Size: 6 Vials

Storage is content dependent.

[www.novusbio.com](http://www.novusbio.com)



[technical@novusbio.com](mailto:technical@novusbio.com)

Protocols, Publications, Related Products, Reviews, Research Tools and Images at:  
[www.novusbio.com/NBP3-12863](http://www.novusbio.com/NBP3-12863)

Updated 7/4/2023 v.20.1

**Earn rewards for product  
reviews and publications.**

Submit a publication at [www.novusbio.com/publications](http://www.novusbio.com/publications)

Submit a review at [www.novusbio.com/reviews/destination/NBP3-12863](http://www.novusbio.com/reviews/destination/NBP3-12863)



**NBP3-12863****T Cell Exhaustion Marker (Flow-Directly Conjugated) Antibody Pack**

<b>Product Information</b>	
<b>Unit Size</b>	6 Vials
<b>Concentration</b>	Concentration of individual antibodies may be found on the vial label. If unlisted please contact technical services.
<b>Storage</b>	Storage is content dependent.
<b>Clonality</b>	Monoclonal
<b>Buffer</b>	See individual datasheets
<b>Product Description</b>	
<b>Description</b>	<p>The Human T Cell Exhaustion Marker (Flow-Directly Conjugated) Antibody Sampler Pack contains antibodies to detect expression of inhibitory receptors associated with T cell exhaustion. T cells co-expressing these inhibitory receptors are found during chronic viral infection and within the TME of many solid tumors. Anti-PD-1 is directly conjugated to PE, while anti-CTLA-4, TIGIT, TIM-3, VISTA/B7-H5/PD-1H and LAG-3 are directly conjugated to APC. This pack contains 6 full sized vials of directly conjugated primary antibody. It will allow the user to determine the co-expression of emerging checkpoint targets like LAG-3, TIM-3, TIGIT, and VISTA with the established checkpoint target, PD-1 using flow cytometry. All antibodies have been validated for use in flow cytometry applications.</p> <p>This pack contains 1 vial each of:  FAB10863P (100 ug)  FAB3253A (100 ug)  FAB7898A (100 ug)  FAB2365RA (0.1 ml)  MAB71263APC (100 ul)  MAB23191APC (100 ul)</p>
<b>Species</b>	Human
<b>Reactivity Notes</b>	Antibodies in this pack are validated for use in the following species: FAB10863P: Human FAB3253A: Human FAB7898A: Human FAB2365RA: Human MAB23191APC: Human MAB71263APC: Human
<b>Marker</b>	T cell exhaustion
<b>Specificity/Sensitivity</b>	Please see each vial's data sheet for specificity information specific to each product.
<b>Immunogen</b>	See individual datasheets
<b>Kit Components</b>	FAB10863P, FAB3253A, FAB7898A: TIGIT Antibody (741182) [Allophycocyanin], FAB2365RA, MAB23191APC: LAG-3 Antibody (874525) [Allophycocyanin], MAB71263APC: VISTA/B7-H5/PD-1H Antibody (730823) [Allophycocyanin]
<b>Product Application Details</b>	
<b>Applications</b>	Flow Cytometry
<b>Recommended Dilutions</b>	Flow Cytometry



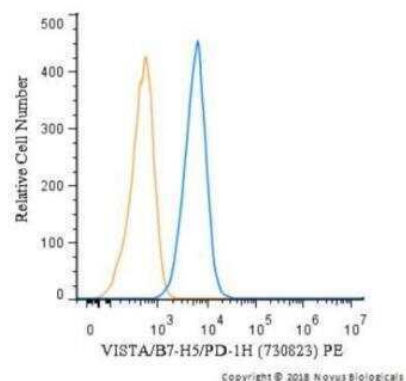
**Application Notes**

Antibodies in this pack are validated for the following applications:

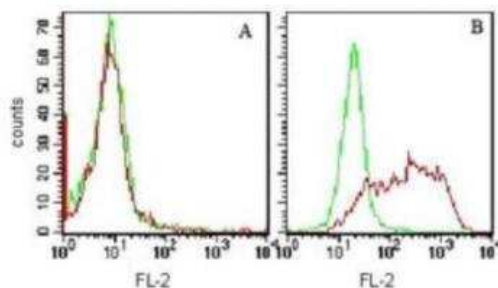
FAB10863P: Flow Cytometry  
 FAB3253A: Flow Cytometry  
 FAB7898A: Flow Cytometry  
 FAB2365RA: Flow Cytometry  
 MAB23191APC: Flow Cytometry  
 MAB71263APC: Flow Cytometry

**Images**

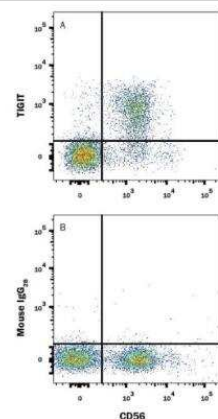
Flow Cytometry: T Cell Exhaustion Marker (Flow-Directly Conjugated) - A cell surface stain was performed on U-937 cells with VISTA/B7-H5/PD-1H (730823) antibody MAB71263PE (blue) and a matched isotype control (orange). Cells were incubated in an antibody dilution of 2.5 ug/mL for 20 minutes at room temperature. Both antibodies were conjugated to phycoerythrin.



Flow Cytometry: T Cell Exhaustion Marker (Flow-Directly Conjugated) - Cell surface staining of unstimulated (A) and Con A stimulated (B) human PBMCs with purified human TIM-3 antibody (Red) and mouse IgG1 isotype control (Green) and PE-conjugated secondary antibody this antibody was used for this test (cells were not fixed for testing).



Flow Cytometry: T Cell Exhaustion Marker (Flow-Directly Conjugated) - Human peripheral blood mononuclear cells (PBMCs) gated on CD3(-) cells were stained with Mouse Anti-Human NCAM-1/CD56 PE-conjugated Monoclonal Antibody (Catalog# FAB2408P) and either (A) Mouse Anti-Human TIGIT APC-conjugated Monoclonal Antibody (Catalog # FAB7898A) or (B) Mouse IgG2B Allophycocyanin Isotype Control (Catalog# IC0041A).





### **Novus Biologicals USA**

10730 E. Briarwood Avenue  
Centennial, CO 80112  
USA

Phone: 303.730.1950  
Toll Free: 1.888.506.6887  
Fax: 303.730.1966  
novus@novusbio.com

### **Bio-Techne Canada**

21 Canmotor Ave  
Toronto, ON M8Z 4E6  
Canada

Phone: 905.827.6400  
Toll Free: 855.668.8722  
Fax: 905.827.6402  
canada.inquires@bio-techne.com

### **Bio-Techne Ltd**

19 Barton Lane  
Abingdon Science Park  
Abingdon, OX14 3NB, United Kingdom  
Phone: (44) (0) 1235 529449  
Free Phone: 0800 37 34 15  
Fax: (44) (0) 1235 533420  
info.EMEA@bio-techne.com

### **General Contact Information**

www.novusbio.com  
Technical Support: technical@novusbio.com  
Orders: orders@novusbio.com  
General: novus@novusbio.com

### **Limitations**

This product is for research use only and is not approved for use in humans or in clinical diagnosis. Antibody Packs are guaranteed for 1 year from date of receipt.

For more information on our 100% guarantee, please visit [www.novusbio.com/guarantee](http://www.novusbio.com/guarantee)

Earn gift cards/discounts by submitting a review: [www.novusbio.com/reviews/submit/NBP3-12863](http://www.novusbio.com/reviews/submit/NBP3-12863)

Earn gift cards/discounts by submitting a publication using this product:  
[www.novusbio.com/publications](http://www.novusbio.com/publications)

