

# Product Datasheet

## SARS-CoV-2 Spike RBD Antibody (T5P8-F9) - VHH NBP3-12846

Unit Size: 0.1 mg

Store at -20C. Avoid freeze-thaw cycles.

[www.novusbio.com](http://www.novusbio.com)



[technical@novusbio.com](mailto:technical@novusbio.com)

Protocols, Publications, Related Products, Reviews, Research Tools and Images at:  
[www.novusbio.com/NBP3-12846](http://www.novusbio.com/NBP3-12846)

Updated 2/6/2022 v.20.1

Earn rewards for product  
reviews and publications.

Submit a publication at [www.novusbio.com/publications](http://www.novusbio.com/publications)

Submit a review at [www.novusbio.com/reviews/destination/NBP3-12846](http://www.novusbio.com/reviews/destination/NBP3-12846)



**NBP3-12846****SARS-CoV-2 Spike RBD Antibody (T5P8-F9) - VHH****Product Information**

<b>Unit Size</b>	0.1 mg
<b>Concentration</b>	Please see the vial label for concentration. If unlisted please contact technical services.
<b>Storage</b>	Store at -20C. Avoid freeze-thaw cycles.
<b>Clonality</b>	Monoclonal
<b>Clone</b>	T5P8-F9
<b>Preservative</b>	No Preservative
<b>Purity</b>	Affinity purified
<b>Buffer</b>	PBS

**Product Description**

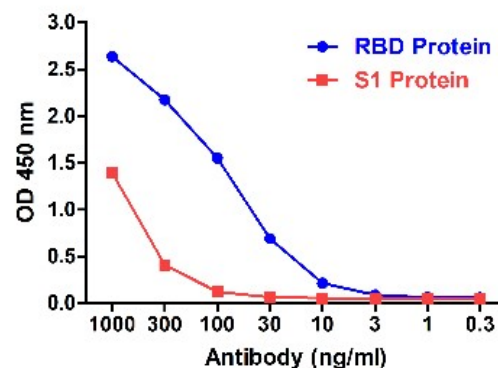
<b>Description</b>	Recombinant Monoclonal Antibody - Llamabody(TM). Llama VHH domain containing a Myc-tag for detection and His-tag (MW ~ 15kDa)
<b>Host</b>	Llama
<b>Gene ID</b>	43740568
<b>Gene Symbol</b>	S
<b>Species</b>	SARS-CoV-2
<b>Immunogen</b>	SARS-CoV-2 S protein RBD containing C-terminal His Tag. The protein was expressed in human 293 cells (HEK293). It contains amino acids Arg 319 - Lys 537.

**Product Application Details**

<b>Applications</b>	ELISA
<b>Recommended Dilutions</b>	ELISA

**Images**

**ELISA: SARS-CoV-2 Spike RBD Antibody (T5P8-F9) - VHH [NBP3-12846]** - A direct ELISA was performed using SARS-CoV-2 Spike recombinant proteins (RBD, S1) as coating antigen at 1 ug/mL and the anti-SARS-CoV-2 Spike RBD antibody (NBP3-12846) as the capture antibody, following by anti-cMyc-tag antibody at 1 ug/mL. Secondary: Goat anti-mouse IgG HRP conjugate at 1:5000 dilution. Detection range is from 0.3 ng/mL to 1000 ng/mL. SARS-CoV-2 Spike RBD Antibody, NBP3-12846 can detect spike RBD protein at 10 ng/mL and can weakly detect spike S1 protein at 200 ng/mL.





### **Novus Biologicals USA**

10730 E. Briarwood Avenue  
Centennial, CO 80112  
USA  
Phone: 303.730.1950  
Toll Free: 1.888.506.6887  
Fax: 303.730.1966  
novus@novusbio.com

### **Bio-Techne Canada**

21 Canmotor Ave  
Toronto, ON M8Z 4E6  
Canada  
Phone: 905.827.6400  
Toll Free: 855.668.8722  
Fax: 905.827.6402  
canada.inquires@bio-techne.com

### **Bio-Techne Ltd**

19 Barton Lane  
Abingdon Science Park  
Abingdon, OX14 3NB, United Kingdom  
Phone: (44) (0) 1235 529449  
Free Phone: 0800 37 34 15  
Fax: (44) (0) 1235 533420  
info.EMEA@bio-techne.com

### **General Contact Information**

www.novusbio.com  
Technical Support: technical@novusbio.com  
Orders: orders@novusbio.com  
General: novus@novusbio.com

### **Products Related to NBP3-12846**

AF011-500	Goat anti-Llama IgG Secondary Antibody [Unconjugated]
NB7242	Goat anti-Llama IgG (H+L) Secondary Antibody [HRP]
10628-CV-100	SARS-CoV-2 Spike RBD [Unconjugated]

### **Limitations**

This product is for research use only and is not approved for use in humans or in clinical diagnosis. Primary Antibodies are guaranteed for 1 year from date of receipt.

For more information on our 100% guarantee, please visit [www.novusbio.com/guarantee](http://www.novusbio.com/guarantee)

Earn gift cards/discounts by submitting a review: [www.novusbio.com/reviews/submit/NBP3-12846](http://www.novusbio.com/reviews/submit/NBP3-12846)

Earn gift cards/discounts by submitting a publication using this product:  
[www.novusbio.com/publications](http://www.novusbio.com/publications)

