

# Product Datasheet

## NLRX1 Antibody NBP3-12566-100ul

Unit Size: 100 ul

Store at 4C short term. Aliquot and store at -20C long term. Avoid freeze-thaw cycles.

[www.novusbio.com](http://www.novusbio.com)



[technical@novusbio.com](mailto:technical@novusbio.com)

Protocols, Publications, Related Products, Reviews, Research Tools and Images at:  
[www.novusbio.com/NBP3-12566](http://www.novusbio.com/NBP3-12566)

Updated 9/5/2023 v.20.1

Earn rewards for product  
reviews and publications.

Submit a publication at [www.novusbio.com/publications](http://www.novusbio.com/publications)

Submit a review at [www.novusbio.com/reviews/destination/NBP3-12566](http://www.novusbio.com/reviews/destination/NBP3-12566)



**NBP3-12566-100ul****NLRX1 Antibody**

| <b>Product Information</b> |   |
|----------------------------|---|
| <b>Unit Size</b>           | 100 ul  |
| <b>Concentration</b>       | Please see the vial label for concentration. If unlisted please contact technical services. |
| <b>Storage</b>             | Store at 4C short term. Aliquot and store at -20C long term. Avoid freeze-thaw cycles.      |
| <b>Clonality</b>           | Polyclonal  |
| <b>Preservative</b>        | 0.03% Proclin 300   |
| <b>Isotype</b>             | IgG   |
| <b>Purity</b>              | Antigen and protein A Affinity-purified   |
| <b>Buffer</b>              | PBS, pH7.0  |

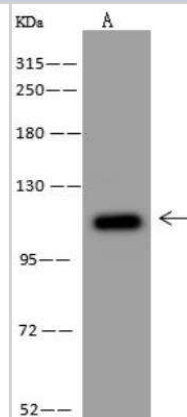
| <b>Product Description</b> |  |
|----------------------------|--|
| <b>Description</b>         | <p>This antibody can be stored at 2-8C for one month without detectable loss of activity. Antibody products are stable for twelve months from date of receipt when stored at -20C to -80C. Avoid repeated freeze-thaw cycles.</p> <p>Protein A &amp; Antigen Affinity purified</p> |
| <b>Host</b>                | Rabbit   |
| <b>Gene Symbol</b>         | NLRX1  |
| <b>Species</b>             | Human  |
| <b>Immunogen</b>           | Produced in rabbits immunized with E. coli-derived Human NLRX1 fragment  |

| <b>Product Application Details</b> |   |
|------------------------------------|---|
| <b>Applications</b>                | Western Blot, Immunocytochemistry/ Immunofluorescence, Immunohistochemistry-Paraffin, Immunoprecipitation   |
| <b>Recommended Dilutions</b>       | Western Blot 1:500-1:2000, Immunocytochemistry/ Immunofluorescence 1:100-1:500, Immunoprecipitation 1-5uL/mg of uLysate, Immunohistochemistry-Paraffin 1:50-1:200 |

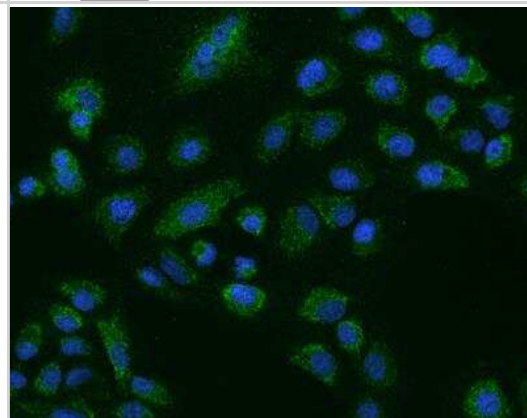


## Images

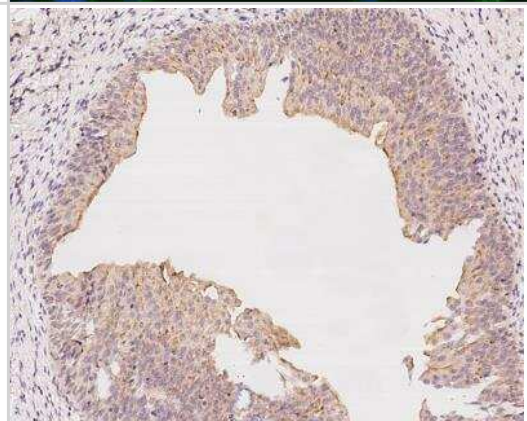
Western Blot: NLRX1 Antibody [NBP3-12566] - Lane A: MCF7 Whole Cell Lysate Lysates/proteins at 30 ug per lane. Secondary Goat Anti-Rabbit IgG (H+L)/HRP at 1/10000 dilution. Developed using the ECL technique. Performed under reducing conditions. Predicted band size:108 kDa Observed band size:110 kDa



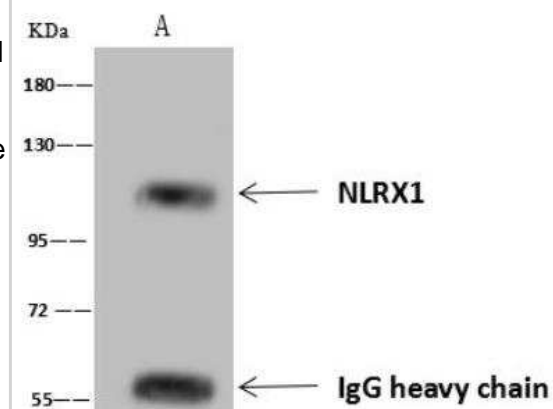
Immunocytochemistry/Immunofluorescence: NLRX1 Antibody [NBP3-12566] - Staining of NLRX1 in A549 cells. Cells were fixed with 4% PFA, permeabilized with 0.1% Triton X-100 in PBS, blocked with 10% serum, and incubated with rabbit anti-Human NLRX1 polyclonal antibody (dilution ratio 1:200) at 4°C overnight. Then cells were stained with the Alexa Fluor®488-conjugated Goat Anti-rabbit IgG secondary antibody (green) and counterstained with DAPI (blue). Positive staining was localized to Cytoplasm.



Immunohistochemistry-Paraffin: NLRX1 Antibody [NBP3-12566] - Staining of human NLRX1 in human urinary bladder with rabbit polyclonal antibody at 1:100 dilution.



Immunoprecipitation: NLRX1 Antibody [NBP3-12566] - Lane A:0.5 mg MCF7 Whole Cell Lysate 4 uL anti-NLRX1 rabbit polyclonal antibody and 60 ug of Immunomagnetic beads Protein A/G. Primary antibody: Anti-NLRX1 rabbit polyclonal antibody, at 1:100 dilution Secondary antibody: Goat Anti-Rabbit IgG (H+L)/HRP at 1/10000 dilution Developed using the ECL technique. Performed under reducing conditions. Predicted band size: 108 kDa Observed band size :110 kDa





### **Novus Biologicals USA**

10730 E. Briarwood Avenue  
Centennial, CO 80112  
USA  
Phone: 303.730.1950  
Toll Free: 1.888.506.6887  
Fax: 303.730.1966  
nb-customerservice@bio-techne.com

### **Bio-Techne Canada**

21 Canmotor Ave  
Toronto, ON M8Z 4E6  
Canada  
Phone: 905.827.6400  
Toll Free: 855.668.8722  
Fax: 905.827.6402  
canada.inquires@bio-techne.com

### **Bio-Techne Ltd**

19 Barton Lane  
Abingdon Science Park  
Abingdon, OX14 3NB, United Kingdom  
Phone: (44) (0) 1235 529449  
Free Phone: 0800 37 34 15  
Fax: (44) (0) 1235 533420  
info.EMEA@bio-techne.com

### **General Contact Information**

www.novusbio.com  
Technical Support: nb-technical@bio-techne.com  
Orders: nb-customerservice@bio-techne.com  
General: novus@novusbio.com

### **Products Related to NBP3-12566-100ul**

---

|               |   |
|---------------|---|
| HAF008        | Goat anti-Rabbit IgG Secondary Antibody [HRP]       |
| NB7160        | Goat anti-Rabbit IgG (H+L) Secondary Antibody [HRP] |
| NBP2-24891    | Rabbit IgG Isotype Control                          |
| NBP2-56975PEP | NLRX1 Recombinant Protein Antigen                   |

---

### **Limitations**

This product is for research use only and is not approved for use in humans or in clinical diagnosis. Primary Antibodies are guaranteed for 1 year from date of receipt.

For more information on our 100% guarantee, please visit [www.novusbio.com/guarantee](http://www.novusbio.com/guarantee)

Earn gift cards/discounts by submitting a review: [www.novusbio.com/reviews/submit/NBP3-12566](http://www.novusbio.com/reviews/submit/NBP3-12566)

Earn gift cards/discounts by submitting a publication using this product:  
[www.novusbio.com/publications](http://www.novusbio.com/publications)

