

# Product Datasheet

## CCR5 [p Ser337] Antibody (V14/2) [PE] NBP3-11996PE

Unit Size: 0.1 ml

Store at 4C in the dark.

[www.novusbio.com](http://www.novusbio.com)



[technical@novusbio.com](mailto:technical@novusbio.com)

Protocols, Publications, Related Products, Reviews, Research Tools and Images at:  
[www.novusbio.com/NBP3-11996PE](http://www.novusbio.com/NBP3-11996PE)

Updated 7/11/2023 v.20.1

Earn rewards for product  
reviews and publications.

Submit a publication at [www.novusbio.com/publications](http://www.novusbio.com/publications)

Submit a review at [www.novusbio.com/reviews/destination/NBP3-11996PE](http://www.novusbio.com/reviews/destination/NBP3-11996PE)



**NBP3-11996PE**

CCR5 [p Ser337] Antibody (V14/2) [PE]

**Product Information**

<b>Unit Size</b>	0.1 ml
<b>Concentration</b>	Please see the vial label for concentration. If unlisted please contact technical services.
<b>Storage</b>	Store at 4C in the dark.
<b>Clonality</b>	Monoclonal
<b>Clone</b>	V14/2
<b>Preservative</b>	0.05% Sodium Azide
<b>Isotype</b>	IgG Kappa
<b>Conjugate</b>	PE
<b>Purity</b>	Protein A purified
<b>Buffer</b>	PBS

**Product Description**

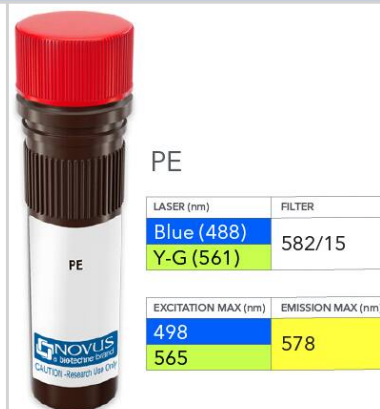
<b>Host</b>	Rabbit
<b>Gene ID</b>	1234
<b>Gene Symbol</b>	CCR5
<b>Species</b>	Human
<b>Specificity/Sensitivity</b>	V14/2 antibody has been demonstrated to exclusively recognise CCR5 (CD195) phosphorylated at Ser 337.
<b>Immunogen</b>	This antibody was raised by immunizing mice with a synthetic phospho peptide corresponding to the C-Terminal region of human CCR5 conjugated to BSA.

**Product Application Details**

<b>Applications</b>	Western Blot, ELISA, Flow Cytometry, Immunocytochemistry/Immunofluorescence, Immunoprecipitation
<b>Recommended Dilutions</b>	Western Blot, Flow Cytometry, ELISA, Immunocytochemistry/Immunofluorescence, Immunoprecipitation
<b>Application Notes</b>	Optimal dilution of this antibody should be experimentally determined.

**Images**

CCR5 [p Ser337] Antibody (V14/2) [PE] [NBP3-11996PE] - Vial of PE conjugated antibody. PE has two excitation maxima, 498 nm excited by the Blue laser (488 nm) and 565 nm excited by the Yellow-Green laser (561 nm). Both result in emission at 578 nm.





### **Novus Biologicals USA**

10730 E. Briarwood Avenue  
Centennial, CO 80112  
USA  
Phone: 303.730.1950  
Toll Free: 1.888.506.6887  
Fax: 303.730.1966  
nb-customerservice@bio-techne.com

### **Bio-Techne Canada**

21 Canmotor Ave  
Toronto, ON M8Z 4E6  
Canada  
Phone: 905.827.6400  
Toll Free: 855.668.8722  
Fax: 905.827.6402  
canada.inquires@bio-techne.com

### **Bio-Techne Ltd**

19 Barton Lane  
Abingdon Science Park  
Abingdon, OX14 3NB, United Kingdom  
Phone: (44) (0) 1235 529449  
Free Phone: 0800 37 34 15  
Fax: (44) (0) 1235 533420  
info.EMEA@bio-techne.com

### **General Contact Information**

www.novusbio.com  
Technical Support: nb-technical@bio-techne.com  
Orders: nb-customerservice@bio-techne.com  
General: novus@novusbio.com

### **Products Related to NBP3-11996PE**

---

NB100-56337PEP	CCR5 Antibody Blocking Peptide
210-TA-005	TNF-alpha [Unconjugated]
H00001234-P01-2ug	Recombinant Human CCR5 GST (N-Term) Protein
6507-IL-010/CF	IL-4 [Unconjugated]

---

### **Limitations**

This product is for research use only and is not approved for use in humans or in clinical diagnosis. Primary Antibodies are guaranteed for 1 year from date of receipt.

For more information on our 100% guarantee, please visit [www.novusbio.com/guarantee](http://www.novusbio.com/guarantee)

Earn gift cards/discounts by submitting a review: [www.novusbio.com/reviews/submit/NBP3-11996PE](http://www.novusbio.com/reviews/submit/NBP3-11996PE)

Earn gift cards/discounts by submitting a publication using this product:  
[www.novusbio.com/publications](http://www.novusbio.com/publications)

