

# Product Datasheet

## **CCRL2/CRAM-A/B Antibody (BZ2E3) - Chimeric - Azide and BSA Free** **NBP3-11982-0.2mg**

Unit Size: 0.2 mg

Store at 4C for up to 3 months. For longer storage, aliquot and store at -20C.

[www.novusbio.com](http://www.novusbio.com)



[technical@novusbio.com](mailto:technical@novusbio.com)

Protocols, Publications, Related Products, Reviews, Research Tools and Images at:  
[www.novusbio.com/NBP3-11982](http://www.novusbio.com/NBP3-11982)

Updated 4/19/2023 v.20.1

Earn rewards for product reviews and publications.

Submit a publication at [www.novusbio.com/publications](http://www.novusbio.com/publications)

Submit a review at [www.novusbio.com/reviews/destination/NBP3-11982](http://www.novusbio.com/reviews/destination/NBP3-11982)



**NBP3-11982-0.2mg**

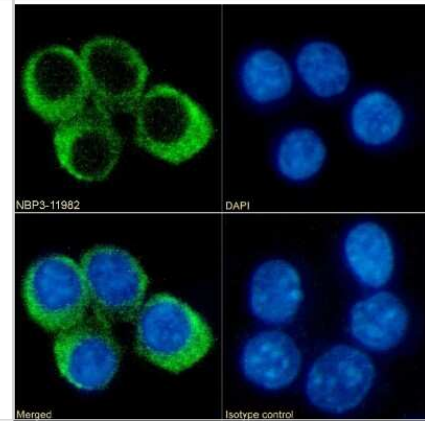
CCRL2/CRAM-A/B Antibody (BZ2E3) - Chimeric - Azide and BSA Free

Product Information	
Unit Size	0.2 mg
Concentration	1 mg/ml
Storage	Store at 4C for up to 3 months. For longer storage, aliquot and store at -20C.
Clonality	Monoclonal
Clone	BZ2E3
Preservative	0.02% Proclin 300
Isotype	IgG Kappa
Purity	Protein A purified
Buffer	PBS
Product Description	
Host	Rabbit
Gene ID	9034
Gene Symbol	CCRL2
Species	Mouse
Specificity/Sensitivity	This antibody is specific for murine CCRL2/CRAM-A/B (formerly known as L-CCR), which is expressed on mast cells, activated macrophages, and endothelial cells. This receptor binds the leukocyte chemoattractant chemerin without triggering classical GPCR signaling, providing a specific mechanism for local enrichment of chemerin at inflammatory sites. CCRL2/CRAM-A/B presents active chemerin to leukocytes expressing the chemoattractant receptor CMKLR1/Chemr23. Chemerin can block anti-CCRL2/CRAM-A/B antibody binding.
Immunogen	This antibody was raised by immunising Wistar Furth rats with the mCCRL2/CRAM-A/B peptide/KLH conjugate. The immunizing amino-terminal mCCRL2/CRAM-A/B peptide with the sequence NH <sub>2</sub> -MDNYTVAPDDEYDVLILDDYLDNSC-COOH, corresponding to residues 1-24 of mCCRL2/CRAM-A/B, with a nonnative carboxyl-terminal cysteine to facilitate conjugation to keyhole limpet hemocyanin (KLH).
Product Application Details	
Applications	Western Blot, ELISA, Flow Cytometry, Immunocytochemistry/Immunofluorescence, Immunohistochemistry, Immunoprecipitation, Functional Assay
Recommended Dilutions	Western Blot, Flow Cytometry, ELISA, Immunohistochemistry, Immunocytochemistry/Immunofluorescence, Immunoprecipitation, Functional Assay
Application Notes	This chimeric rabbit antibody was made using the variable domain sequences of the original Rat IgG2a format, for improved compatibility with existing reagents, assays and techniques.



## Images

Immunocytochemistry/Immunofluorescence: CCRL2/CRAM-A/B Antibody (BZ2E3) - Chimeric [NBP3-11982] - Immunofluorescence analysis of paraformaldehyde fixed RAW264.7 cells on Shi-fix(TM) coverslips stained with the chimeric rabbit IgG version of BZ2E3 (NBP3-11982) at 10 ug/ml for 1h followed by Alexa Fluor(R) 488 secondary antibody (2 ug/ml), showing membrane staining. The nuclear stain is DAPI (blue). Panels show from left-right, top-bottom NBP3-11982, DAPI, merged channels and an isotype control. The isotype control was an unknown specificity antibody followed by staining with Alexa Fluor(R) 488 secondary antibody.





### **Novus Biologicals USA**

10730 E. Briarwood Avenue  
Centennial, CO 80112  
USA  
Phone: 303.730.1950  
Toll Free: 1.888.506.6887  
Fax: 303.730.1966  
nb-customerservice@bio-techne.com

### **Bio-Techne Canada**

21 Canmotor Ave  
Toronto, ON M8Z 4E6  
Canada  
Phone: 905.827.6400  
Toll Free: 855.668.8722  
Fax: 905.827.6402  
canada.inquires@bio-techne.com

### **Bio-Techne Ltd**

19 Barton Lane  
Abingdon Science Park  
Abingdon, OX14 3NB, United Kingdom  
Phone: (44) (0) 1235 529449  
Free Phone: 0800 37 34 15  
Fax: (44) (0) 1235 533420  
info.EMEA@bio-techne.com

### **General Contact Information**

[www.novusbio.com](http://www.novusbio.com)  
Technical Support: nb-technical@bio-techne.com  
Orders: nb-customerservice@bio-techne.com  
General: novus@novusbio.com

### **Products Related to NBP3-11982-0.2mg**

---

HAF008	Goat anti-Rabbit IgG Secondary Antibody [HRP]
NB7160	Goat anti-Rabbit IgG (H+L) Secondary Antibody [HRP]
H00009034-P01-2ug	Recombinant Human CCRL2/CRAM-A/B GST (N-Term) Protein
210-TA-005	TNF-alpha [Unconjugated]

---

### **Limitations**

This product is for research use only and is not approved for use in humans or in clinical diagnosis. Primary Antibodies are guaranteed for 1 year from date of receipt.

For more information on our 100% guarantee, please visit [www.novusbio.com/guarantee](http://www.novusbio.com/guarantee)

Earn gift cards/discounts by submitting a review: [www.novusbio.com/reviews/submit/NBP3-11982](http://www.novusbio.com/reviews/submit/NBP3-11982)

Earn gift cards/discounts by submitting a publication using this product:  
[www.novusbio.com/publications](http://www.novusbio.com/publications)

