

# Product Datasheet

## CTLA-4 Antibody (9H10) [PE]

### NBP3-11966PE

Unit Size: 0.1 ml

Store at 4C in the dark.

[www.novusbio.com](http://www.novusbio.com)



[technical@novusbio.com](mailto:technical@novusbio.com)

Protocols, Publications, Related Products, Reviews, Research Tools and Images at:  
[www.novusbio.com/NBP3-11966PE](http://www.novusbio.com/NBP3-11966PE)

Updated 7/11/2023 v.20.1

Earn rewards for product  
reviews and publications.

Submit a publication at [www.novusbio.com/publications](http://www.novusbio.com/publications)

Submit a review at [www.novusbio.com/reviews/destination/NBP3-11966PE](http://www.novusbio.com/reviews/destination/NBP3-11966PE)



**NBP3-11966PE**

CTLA-4 Antibody (9H10) [PE]

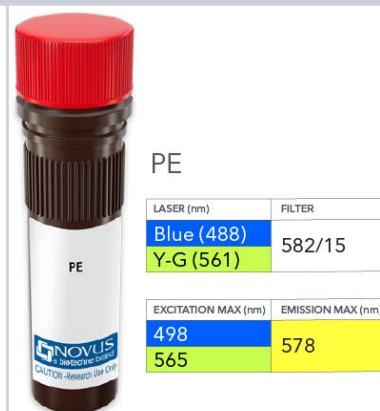
Product Information	
Unit Size	0.1 ml
Concentration	Please see the vial label for concentration. If unlisted please contact technical services.
Storage	Store at 4C in the dark.
Clonality	Monoclonal
Clone	9H10
Preservative	0.05% Sodium Azide
Isotype	IgG Kappa
Conjugate	PE
Purity	Protein A purified
Buffer	PBS

Product Description	
Host	Rabbit
Gene ID	1493
Gene Symbol	CTLA4
Species	Mouse
Specificity/Sensitivity	This antibody is specific for murine CTLA-4, an inhibitory receptor that acts as the primary negative regulator of T-cell responses. CTLA-4 is expressed predominantly by activated T cells, with significantly higher levels of expression on CD8+ T cells than CD4+ T cells.
Immunogen	This antibody was raised by immunising Syrian hamsters with Staphylococcus A bacteria coated in CTLA-4, isolating B cells from the immunised hamsters and fusing these with the P3X3.Ag8.653 myeloma line to produce stable hybridomas.

Product Application Details	
Applications	Western Blot, ELISA, Flow Cytometry, Neutralization
Recommended Dilutions	Western Blot, Flow Cytometry, ELISA, Neutralization
Application Notes	Optimal dilution of this antibody should be experimentally determined.

**Images**

CTLA-4 Antibody (9H10) [PE] [NBP3-11966PE] - Vial of PE conjugated antibody. PE has two excitation maxima, 498 nm excited by the Blue laser (488 nm) and 565 nm excited by the Yellow-Green laser (561 nm). Both result in emission at 578 nm.





### **Novus Biologicals USA**

10730 E. Briarwood Avenue  
Centennial, CO 80112  
USA  
Phone: 303.730.1950  
Toll Free: 1.888.506.6887  
Fax: 303.730.1966  
nb-customerservice@bio-techne.com

### **Bio-Techne Canada**

21 Canmotor Ave  
Toronto, ON M8Z 4E6  
Canada  
Phone: 905.827.6400  
Toll Free: 855.668.8722  
Fax: 905.827.6402  
canada.inquires@bio-techne.com

### **Bio-Techne Ltd**

19 Barton Lane  
Abingdon Science Park  
Abingdon, OX14 3NB, United Kingdom  
Phone: (44) (0) 1235 529449  
Free Phone: 0800 37 34 15  
Fax: (44) (0) 1235 533420  
info.EMEA@bio-techne.com

### **General Contact Information**

www.novusbio.com  
Technical Support: nb-technical@bio-techne.com  
Orders: nb-customerservice@bio-techne.com  
General: novus@novusbio.com

### **Products Related to NBP3-11966PE**

---

NBP2-22987	Recombinant Human CTLA-4 His Protein
210-TA-005	TNF-alpha [Unconjugated]
7268-CT-100	CTLA-4 [Unconjugated]
D6050	IL-6 [HRP]

---

### **Limitations**

This product is for research use only and is not approved for use in humans or in clinical diagnosis. Primary Antibodies are guaranteed for 1 year from date of receipt.

For more information on our 100% guarantee, please visit [www.novusbio.com/guarantee](http://www.novusbio.com/guarantee)

Earn gift cards/discounts by submitting a review: [www.novusbio.com/reviews/submit/NBP3-11966PE](http://www.novusbio.com/reviews/submit/NBP3-11966PE)

Earn gift cards/discounts by submitting a publication using this product:  
[www.novusbio.com/publications](http://www.novusbio.com/publications)

