

# Product Datasheet

## Dre recombinase Antibody

### NBP3-11868-100ul

Unit Size: 100 ul

Store at -20C short term. Aliquot and store at -80C long term. Avoid freeze-thaw cycles.

[www.novusbio.com](http://www.novusbio.com)



[technical@novusbio.com](mailto:technical@novusbio.com)

Protocols, Publications, Related Products, Reviews, Research Tools and Images at:  
[www.novusbio.com/NBP3-11868](http://www.novusbio.com/NBP3-11868)

Updated 4/21/2024 v.20.1

Earn rewards for product  
reviews and publications.

Submit a publication at [www.novusbio.com/publications](http://www.novusbio.com/publications)

Submit a review at [www.novusbio.com/reviews/destination/NBP3-11868](http://www.novusbio.com/reviews/destination/NBP3-11868)



**NBP3-11868-100ul**

Dre recombinase Antibody

**Product Information**

<b>Unit Size</b>	100 ul
<b>Concentration</b>	Please see the vial label for concentration. If unlisted please contact technical services.
<b>Storage</b>	Store at -20C short term. Aliquot and store at -80C long term. Avoid freeze-thaw cycles.
<b>Clonality</b>	Polyclonal
<b>Preservative</b>	0.05% Sodium Azide
<b>Purity</b>	Whole Antiserum
<b>Buffer</b>	Whole antiserum

**Product Description**

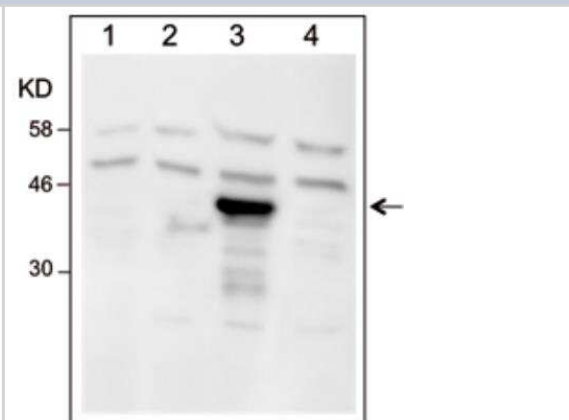
<b>Host</b>	Rabbit
<b>Species</b>	Non-species specific
<b>Immunogen</b>	Polyclonal antibody raised in rabbit against Dre recombinase using a KLH-conjugated synthetic peptide located at the C-terminal part of the protein.

**Product Application Details**

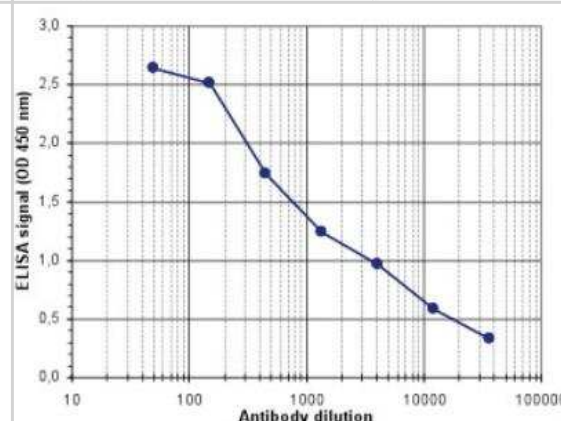
<b>Applications</b>	Western Blot, ELISA
<b>Recommended Dilutions</b>	Western Blot 1:500, ELISA 1:100

**Images**

**Western Blot: Dre recombinase Antibody [NBP3-11868]** - Western blot was performed on whole cell lysates from untransfected 293 cells (lane 1), or 293 cells transfected with Cre (lane 2), Dre (lane 3) or Flp (lane 4) with NBP3-11868 diluted 1:500 in BSA/PBS-Tween. The molecular weight marker (in KD) is shown on the left; the location of the protein of interest (expected size: 38 KD) is indicated on the right.



**ELISA: Dre recombinase Antibody [NBP3-11868]** - To determine the titer, an ELISA was performed using a serial dilution of NBP3-11868 in antigen coated wells. By plotting the absorbance against the antibody dilution, the titer of the antibody was estimated to be 1:1,850.





### **Novus Biologicals USA**

10730 E. Briarwood Avenue  
Centennial, CO 80112  
USA  
Phone: 303.730.1950  
Toll Free: 1.888.506.6887  
Fax: 303.730.1966  
nb-customerservice@bio-techne.com

### **Bio-Techne Canada**

21 Canmotor Ave  
Toronto, ON M8Z 4E6  
Canada  
Phone: 905.827.6400  
Toll Free: 855.668.8722  
Fax: 905.827.6402  
canada.inquires@bio-techne.com

### **Bio-Techne Ltd**

19 Barton Lane  
Abingdon Science Park  
Abingdon, OX14 3NB, United Kingdom  
Phone: (44) (0) 1235 529449  
Free Phone: 0800 37 34 15  
Fax: (44) (0) 1235 533420  
info.EMEA@bio-techne.com

### **General Contact Information**

www.novusbio.com  
Technical Support: nb-technical@bio-techne.com  
Orders: nb-customerservice@bio-techne.com  
General: novus@novusbio.com

### **Products Related to NBP3-11868-100ul**

---

HAF008	Goat anti-Rabbit IgG Secondary Antibody [HRP]
NB7160	Goat anti-Rabbit IgG (H+L) Secondary Antibody [HRP]

---

### **Limitations**

This product is for research use only and is not approved for use in humans or in clinical diagnosis. Primary Antibodies are guaranteed for 1 year from date of receipt.

For more information on our 100% guarantee, please visit [www.novusbio.com/guarantee](http://www.novusbio.com/guarantee)

Earn gift cards/discounts by submitting a review: [www.novusbio.com/reviews/submit/NBP3-11868](http://www.novusbio.com/reviews/submit/NBP3-11868)

Earn gift cards/discounts by submitting a publication using this product:  
[www.novusbio.com/publications](http://www.novusbio.com/publications)

