

# Product Datasheet

## Mouse Pure-Blot anti-Sheep IgG (H+L) Secondary Antibody (eB270) [HRP] NBP3-11669

Unit Size: 200 ul

Store at -20C. Avoid freeze-thaw cycles.

[www.novusbio.com](http://www.novusbio.com)



[technical@novusbio.com](mailto:technical@novusbio.com)

Protocols, Publications, Related Products, Reviews, Research Tools and Images at:  
[www.novusbio.com/NBP3-11669](http://www.novusbio.com/NBP3-11669)

Updated 7/23/2023 v.20.1

Earn rewards for product  
reviews and publications.

Submit a publication at [www.novusbio.com/publications](http://www.novusbio.com/publications)

Submit a review at [www.novusbio.com/reviews/destination/NBP3-11669](http://www.novusbio.com/reviews/destination/NBP3-11669)



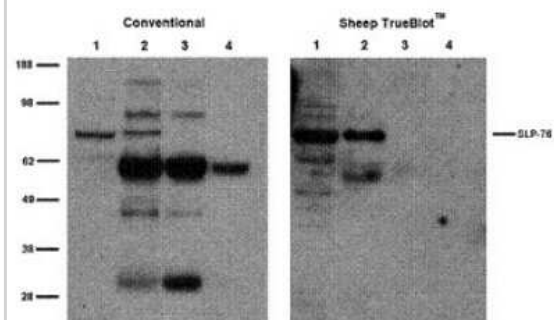
**NBP3-11669**

Mouse Pure-Blot anti-Sheep IgG (H+L) Secondary Antibody (eB270) [HRP]

Product Information	
Unit Size	200 ul
Concentration	Please see the vial label for concentration. If unlisted please contact technical services.
Storage	Store at -20C. Avoid freeze-thaw cycles.
Clonality	Monoclonal
Clone	eB270
Preservative	No Preservative
Isotype	IgG
Conjugate	HRP
Purity	Protein G purified
Buffer	0.02 M Potassium Phosphate, 0.15 M Sodium Chloride, pH 7.2, 0.1 mg/ml Bovine Serum Albumin (BSA, IgG and Protease free), 50% (v/v) Glycerol
Product Description	
Description	Prepared from tissue culture supernatant by Protein G affinity chromatography. Assay by Immunoelectrophoresis resulted in a single precipitin arc against Anti-Sheep Serum.
Host	Mouse
Species	Sheep
Specificity/Sensitivity	Reactivity is observed against native Sheep IgG by both Western blot and ELISA.
Immunogen	Sheep IgG
Product Application Details	
Applications	Western Blot, Immunoprecipitation
Recommended Dilutions	Western Blot 1:1000, Immunoprecipitation
Application Notes	<p>This secondary antibody may also be used for detection in immunoblotting assays that do not employ immunoprecipitation. It is provided as 1000X solution. To conserve reagent, we recommend incubating the blots from minigels in sealed bags (removing as much air as possible) with minimal volume (2-3 mLs). If used conservatively at 2.5mls/blot will yield enough reagent for 80 blots. All recommended dilutions for listed applications are intended as an initial recommendation, specific conditions for each protein and antibody combination should be specifically optimized by the end user.</p> <p>Note that there are three key procedural considerations:  1. Protein A or G beads may be used with the mouse, goat and sheep Pure-Blot secondaries, but not with the rabbit Pure-Blot secondary. Use of protein A or G beads with the rabbit Pure-Blot will result in contaminating bands.  2. Immunoprecipitate should be completely reduced. 3. BLOTTO/Milk should be used as the blocking protein for the immunoblot.</p>

## Images

Western Blot: Mouse Pure-Blot anti-Sheep IgG (H+L) Secondary Antibody (eB270) [HRP] [NBP3-11669] - Jurkat cell lysate (500 ug) was incubated with 2 ug of sheep anti-SLP76 and immunoprecipitated using Protein G. 20 ug Jurkat lysate (lane 1), immunoprecipitate (lane 2) and 1.0 ug and 0.1.0 ug reduced anti-SLP76 (lanes 3 and 4) were subjected to electrophoresis, transferred to a PVDF membrane, and immunoblotted with anti-SLP76 using conventional HRP-conjugated anti-sheep polyclonal antibody (left panel) and Mouse Pure-Blot anti-Sheep IgG Secondary antibody (eB270) [HRP] (right panel).





### **Novus Biologicals USA**

10730 E. Briarwood Avenue  
Centennial, CO 80112  
USA  
Phone: 303.730.1950  
Toll Free: 1.888.506.6887  
Fax: 303.730.1966  
nb-customerservice@bio-techne.com

### **Bio-Techne Canada**

21 Canmotor Ave  
Toronto, ON M8Z 4E6  
Canada  
Phone: 905.827.6400  
Toll Free: 855.668.8722  
Fax: 905.827.6402  
canada.inquires@bio-techne.com

### **Bio-Techne Ltd**

19 Barton Lane  
Abingdon Science Park  
Abingdon, OX14 3NB, United Kingdom  
Phone: (44) (0) 1235 529449  
Free Phone: 0800 37 34 15  
Fax: (44) (0) 1235 533420  
info.EMEA@bio-techne.com

### **General Contact Information**

[www.novusbio.com](http://www.novusbio.com)  
Technical Support: nb-technical@bio-techne.com  
Orders: nb-customerservice@bio-techne.com  
General: novus@novusbio.com

### **Limitations**

This product is for research use only and is not approved for use in humans or in clinical diagnosis. Secondary Antibodies are guaranteed for 1 year from date of receipt.

For more information on our 100% guarantee, please visit [www.novusbio.com/guarantee](http://www.novusbio.com/guarantee)

Earn gift cards/discounts by submitting a review: [www.novusbio.com/reviews/submit/NBP3-11669](http://www.novusbio.com/reviews/submit/NBP3-11669)

Earn gift cards/discounts by submitting a publication using this product:  
[www.novusbio.com/publications](http://www.novusbio.com/publications)

