

Product Datasheet

Rat Pure-Blot anti-Mouse IgG (H+L) Secondary Antibody (eB144) [HRP] NBP3-11661

Unit Size: 200 ul

Store at -20C. Avoid freeze-thaw cycles.

www.novusbio.com



technical@novusbio.com

Protocols, Publications, Related Products, Reviews, Research Tools and Images at:
www.novusbio.com/NBP3-11661

Updated 7/23/2023 v.20.1

Earn rewards for product
reviews and publications.

Submit a publication at www.novusbio.com/publications

Submit a review at www.novusbio.com/reviews/destination/NBP3-11661



NBP3-11661**Rat Pure-Blot anti-Mouse IgG (H+L) Secondary Antibody (eB144) [HRP]**

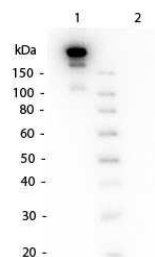
Product Information	
Unit Size	200 ul
Concentration	Please see the vial label for concentration. If unlisted please contact technical services.
Storage	Store at -20C. Avoid freeze-thaw cycles.
Clonality	Monoclonal
Clone	eB144
Preservative	0.01% Proclin
Isotype	IgG
Conjugate	HRP
Purity	Protein G purified
Buffer	0.02 M Potassium Phosphate, 0.15 M Sodium Chloride, pH 7.2, 0.1 mg/ml Bovine Serum Albumin (BSA, IgG and Protease free), 50% (v/v) Glycerol

Product Description	
Description	Prepared from tissue culture supernatant by Protein G affinity chromatography. Assay by Immunoelectrophoresis resulted in a single precipitin arc against Anti-Mouse Serum.
Host	Rat
Species	Mouse
Specificity/Sensitivity	Reactivity is observed against native Mouse IgG by both Western blot and ELISA.
Immunogen	Mouse IgG

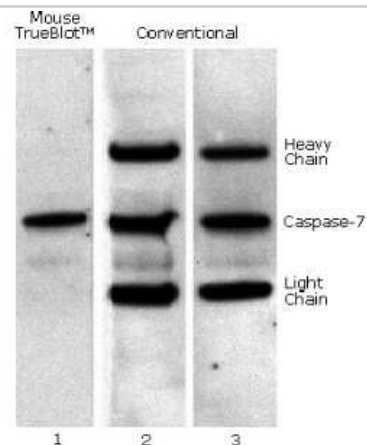
Product Application Details	
Applications	Western Blot, ELISA, Immunoprecipitation
Recommended Dilutions	Western Blot 1:1000, ELISA, Immunoprecipitation
Application Notes	<p>This secondary antibody has been reported for use in IP/immunoblot and immunoblotting (WB). It is provided as 1000X solution. To achieve best results when detecting mouse IgG1 subtypes, we recommend performing a dot blot or titration to determine the optimal dilution factor for your desired application. All recommended dilutions for listed applications are intended as an initial recommendation, specific conditions for each protein and antibody combination should be specifically optimized by the end user. To conserve reagent, we recommend incubating the blots from minigels in sealed bags (removing as much air as possible) with minimal volume (2-3 mLs). If used conservatively at 2.5mls/blot will yield enough reagent for 80 blots.</p> <p>Note that there are three key procedural considerations:</p> <ol style="list-style-type: none"> 1. Protein A or G beads may be used with the mouse, goat and sheep Pure-Blot secondaries, but not with the rabbit Pure-Blot secondary. Use of protein A or G beads with the rabbit Pure-Blot will result in contaminating bands. 2. Immunoprecipitate should be completely reduced. 3. BLOTTO/Milk should be used as the blocking protein for the immunoblot. <p>Suggested applications: Biochemical Assay, ChIP, ICC/IF</p>

Images

Western Blot: Rat Pure-Blot anti-Mouse IgG (H+L) Secondary Antibody (eB144) [HRP] [NBP3-11661] - Western Blot of Rat Pure-Blot anti-Mouse IgG Secondary antibody (eB144) [HRP]. Lane 1: Mouse IgG, non-denatured. Lane 2: 5 uL Opal Pre-stained Ladder [HRP] at 1:1,000 for 60 min at RT. Block for 30 min at RT. Predicted/Observed size: 160 kDa non-denatured for Mouse IgG.



Western Blot: Rat Pure-Blot anti-Mouse IgG (H+L) Secondary Antibody (eB144) [HRP] [NBP3-11661] - Caspase 7 was immunoprecipitated from 0.5 ml of 1×10^7 Jurkat cells/ml with 5 ug mouse anti-human Caspase 7. Precipitate from 1×10^6 cells was subjected to electrophoresis, transferred to an PVDF membrane, and Western blotted with anti-Caspase 7 using Rat Pure-Blot anti-Mouse IgG Secondary antibody (eB144) [HRP] (Lane 1) or conventional HRP-conjugated anti-mouse antibody (Lane 2) - note the detection of the heavy and light chains of the immunoprecipitating antibody in Lane 2 but not in Lane 1. When Lane 1 is re-immunoblotted using conventional HRP-conjugated anti-mouse polyclonal antibody (Lane 3), the heavy and light chains are now detected, confirming that although the immunoprecipitating heavy and light chains are present, Rat Pure-Blot anti-Mouse IgG Secondary antibody (eB144) [HRP] detects only native antibody and not denatured heavy and light chains.





Novus Biologicals USA

10730 E. Briarwood Avenue
Centennial, CO 80112
USA
Phone: 303.730.1950
Toll Free: 1.888.506.6887
Fax: 303.730.1966
nb-customerservice@bio-techne.com

Bio-Techne Canada

21 Canmotor Ave
Toronto, ON M8Z 4E6
Canada
Phone: 905.827.6400
Toll Free: 855.668.8722
Fax: 905.827.6402
canada.inquires@bio-techne.com

Bio-Techne Ltd

19 Barton Lane
Abingdon Science Park
Abingdon, OX14 3NB, United Kingdom
Phone: (44) (0) 1235 529449
Free Phone: 0800 37 34 15
Fax: (44) (0) 1235 533420
info.EMEA@bio-techne.com

General Contact Information

www.novusbio.com
Technical Support: nb-technical@bio-
techne.com
Orders: nb-customerservice@bio-techne.com
General: novus@novusbio.com

Limitations

This product is for research use only and is not approved for use in humans or in clinical diagnosis. Secondary Antibodies are guaranteed for 1 year from date of receipt.

For more information on our 100% guarantee, please visit www.novusbio.com/guarantee

Earn gift cards/discounts by submitting a review: www.novusbio.com/reviews/submit/NBP3-11661

Earn gift cards/discounts by submitting a publication using this product:
www.novusbio.com/publications

