

# Product Datasheet

## CD3 epsilon Antibody (CRIS-7) - Azide and BSA Free NBP3-11448

Unit Size: 0.1 mg

Store at -20 to -80C. Avoid freeze-thaw cycles.

[www.novusbio.com](http://www.novusbio.com)



[technical@novusbio.com](mailto:technical@novusbio.com)

Protocols, Publications, Related Products, Reviews, Research Tools and Images at:  
[www.novusbio.com/NBP3-11448](http://www.novusbio.com/NBP3-11448)

Updated 7/16/2024 v.20.1

Earn rewards for product  
reviews and publications.

Submit a publication at [www.novusbio.com/publications](http://www.novusbio.com/publications)

Submit a review at [www.novusbio.com/reviews/destination/NBP3-11448](http://www.novusbio.com/reviews/destination/NBP3-11448)

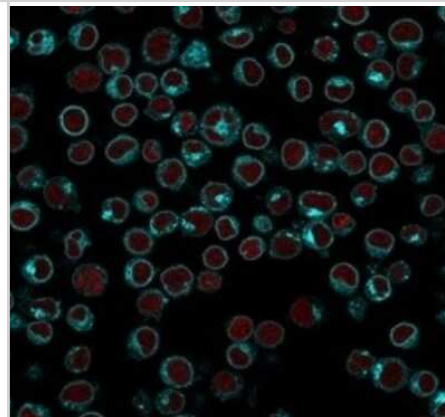


**NBP3-11448****CD3 epsilon Antibody (CRIS-7) - Azide and BSA Free**

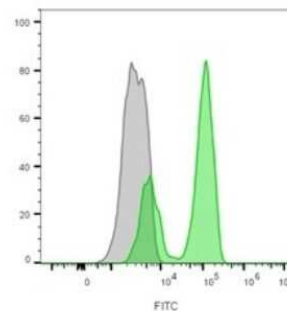
<b>Product Information</b>	
<b>Unit Size</b>	0.1 mg
<b>Concentration</b>	1 mg/ml
<b>Storage</b>	Store at -20 to -80C. Avoid freeze-thaw cycles.
<b>Clonality</b>	Monoclonal
<b>Clone</b>	CRIS-7
<b>Preservative</b>	No Preservative
<b>Isotype</b>	IgG2a Kappa
<b>Purity</b>	Protein A purified
<b>Buffer</b>	10 mM PBS
<b>Target Molecular Weight</b>	20 kDa
<b>Product Description</b>	
<b>Description</b>	1.0 mg/ml of antibody purified from rabbit anti-serum by Protein A. Prepared in 10mM PBS WITHOUT BSA. Also available at 200 ug/ml WITH BSA & azide (NBP2-44878).  Antibody with azide - store at 2 to 8C. Antibody without azide - store at -20 to -80 C.
<b>Host</b>	Mouse
<b>Gene ID</b>	916
<b>Gene Symbol</b>	CD3E
<b>Species</b>	Human, Monkey
<b>Marker</b>	T-Cell Marker
<b>Specificity/Sensitivity</b>	Recognizes the epsilon-chain of CD3, which consists of five different polypeptide chains (designated as gamma, delta, epsilon, zeta, and eta) with MW ranging from 16-28kDa. The CD3 complex is closely associated at the lymphocyte cell surface with the T cell antigen receptor (TCR). Reportedly, CD3 complex is involved in signal transduction to the T cell interior following antigen recognition. The CD3 antigen is first detectable in early thymocytes and probably represents one of the earliest signs of commitment to the T cell lineage. In cortical thymocytes, CD3 is predominantly intra-cytoplasmic. However, in medullary thymocytes, it appears on the T cell surface. CD3 antigen is a highly specific marker for T cells, and is present in majority of T cell neoplasms.
<b>Immunogen</b>	Stimulated human leukocytes
<b>Product Application Details</b>	
<b>Applications</b>	Flow Cytometry, Immunocytochemistry/ Immunofluorescence
<b>Recommended Dilutions</b>	Flow Cytometry 0.5 - 1 ug/million cells in 0.1 ml, Immunocytochemistry/ Immunofluorescence
<b>Application Notes</b>	Induce T cell activation and proliferation: Order Ab without Azide. Optimal dilution for a specific application should be determined.

## Images

Immunocytochemistry/Immunofluorescence: CD3 epsilon Antibody (CRIS-7) - Azide and BSA Free [NBP3-11448] - Immunofluorescence Analysis of PFA-fixed Jurkat cells. CD3 epsilon antibody (CRIS-7) followed by goat anti-mouse IgG-CF488 (cyan). Nuclei stained with RedDot (red).



Flow Cytometry: CD3 epsilon Antibody (CRIS-7) - Azide and BSA Free [NBP3-11448] - Flow cytometric analysis of lymphocyte-gated peripheral blood mononuclear cells. CD3 epsilon antibody (CRIS-7) followed goat anti-mouse IgG-CF488A (green); unstained PBMCs (gray).





### **Novus Biologicals USA**

10730 E. Briarwood Avenue  
Centennial, CO 80112  
USA  
Phone: 303.730.1950  
Toll Free: 1.888.506.6887  
Fax: 303.730.1966  
nb-customerservice@bio-techne.com

### **Bio-Techne Canada**

21 Canmotor Ave  
Toronto, ON M8Z 4E6  
Canada  
Phone: 905.827.6400  
Toll Free: 855.668.8722  
Fax: 905.827.6402  
canada.inquires@bio-techne.com

### **Bio-Techne Ltd**

19 Barton Lane  
Abingdon Science Park  
Abingdon, OX14 3NB, United Kingdom  
Phone: (44) (0) 1235 529449  
Free Phone: 0800 37 34 15  
Fax: (44) (0) 1235 533420  
info.EMEA@bio-techne.com

### **General Contact Information**

www.novusbio.com  
Technical Support: nb-technical@bio-techne.com  
Orders: nb-customerservice@bio-techne.com  
General: novus@novusbio.com

### **Products Related to NBP3-11448**

---

HAF007	Goat anti-Mouse IgG Secondary Antibody [HRP]
NB720-B	Rabbit anti-Mouse IgG (H+L) Secondary Antibody [Biotin]
NBP1-96981-0.5mg	Mouse IgG2a Kappa Isotype Control (M2AK)
NBP2-22752	Recombinant Human CD3 epsilon His Protein

---

### **Limitations**

This product is for research use only and is not approved for use in humans or in clinical diagnosis. Primary Antibodies are guaranteed for 1 year from date of receipt.

For more information on our 100% guarantee, please visit [www.novusbio.com/guarantee](http://www.novusbio.com/guarantee)

Earn gift cards/discounts by submitting a review: [www.novusbio.com/reviews/submit/NBP3-11448](http://www.novusbio.com/reviews/submit/NBP3-11448)

Earn gift cards/discounts by submitting a publication using this product:  
[www.novusbio.com/publications](http://www.novusbio.com/publications)

