

# Product Datasheet

## **Rhodopsin Antibody (Rho 1D4) - Chimeric - Azide and BSA Free** **NBP3-09001-0.2mg**

Unit Size: 0.2 mg

Store at 4C short term. Aliquot and store at -20C long term. Avoid freeze-thaw cycles.

[www.novusbio.com](http://www.novusbio.com)



[technical@novusbio.com](mailto:technical@novusbio.com)

Protocols, Publications, Related Products, Reviews, Research Tools and Images at:  
[www.novusbio.com/NBP3-09001](http://www.novusbio.com/NBP3-09001)

Updated 9/9/2025 v.20.1

Earn rewards for product reviews and publications.

Submit a publication at [www.novusbio.com/publications](http://www.novusbio.com/publications)

Submit a review at [www.novusbio.com/reviews/destination/NBP3-09001](http://www.novusbio.com/reviews/destination/NBP3-09001)



**NBP3-09001-0.2mg**

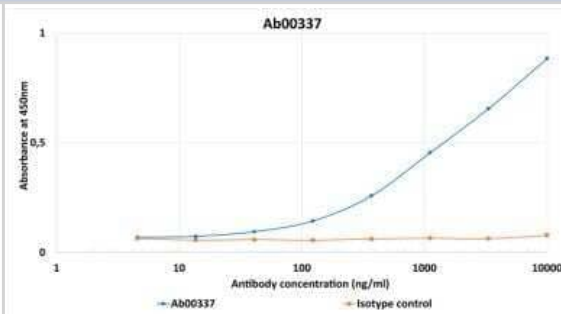
Rhodopsin Antibody (Rho 1D4) - Chimeric - Azide and BSA Free

Product Information	
Unit Size	0.2 mg
Concentration	1 mg/ml
Storage	Store at 4C short term. Aliquot and store at -20C long term. Avoid freeze-thaw cycles.
Clonality	Monoclonal
Clone	Rho 1D4
Preservative	0.02% Proclin 300
Isotype	IgG1 Kappa
Purity	Protein A purified
Buffer	PBS
Product Description	
Description	Novus Biologicals Mouse Rhodopsin Antibody (Rho 1D4) - Chimeric - Azide and BSA Free (NBP3-09001) is a recombinant monoclonal antibody validated for use in IHC, WB, ELISA, ICC/IF and IP. All Novus Biologicals antibodies are covered by our 100% guarantee.
Host	Mouse
Gene ID	6010
Gene Symbol	RHO
Species	Human, Mouse, Rat, Amphibian, Bovine, Zebrafish
Specificity/Sensitivity	The antibody binds to the C-terminus of rhodopsin on the cytoplasmic side of disk membranes. The epitope has the following amino acid sequence: 'TETSQVAPA'. A limitation of the 1D4 tag, however, is that it has to be placed at the C-terminus of a protein. This is because the Rho1D4 monoclonal antibody requires a free carboxylate group for high affinity binding. Amidation of the carboxyl group lowers its immunoreactivity to the Rho1D4 antibody by over 100 fold.
Immunogen	Bleached bovine rod outer segment (ROS).
Product Application Details	
Applications	Western Blot, ELISA, Immunocytochemistry/ Immunofluorescence, Immunohistochemistry, Immunoprecipitation, Radioimmunoassay
Recommended Dilutions	Western Blot, ELISA, Immunohistochemistry, Immunocytochemistry/ Immunofluorescence, Immunoprecipitation, Radioimmunoassay
Application Notes	<p>This is a chimeric antibody created for improved compatibility with existing reagents, assays and techniques.</p> <p>The antibody binds to the C-terminus of rhodopsin on the cytoplasmic side of disk membranes. Rhodopsin is the major pigment in rod photoreceptors and belongs to the family of G-protein-coupled receptors (GPCRs). The linear epitope (TETSQVAPA) can be used as a protein tag.</p>



## Images

ELISA: Rhodopsin Antibody (Rho 1D4) - Chimeric [NBP3-09001] - Using 1D4 (Ab00337) and Multi Tag protein 2. Binding curves of the mouse IgG1 chimeric version of the Rhodopsin antibody 1D4 (Ab00337-1.1; dark blue line) and isotype control (Ab00102-1.1, anti-fluorescein; orange line) to an ELISA plate coated with Multi Tag protein 2 (Pr00565, Absolute Antibody) at a concentration of 5 ug/ml. Ab02007 antibody was titrated on a 3-fold serial dilution starting at 10,000 ng/mL. Anti-mouse IgG was used as secondary antibody for detection at a dilution of 1:4,000.





### **Novus Biologicals USA**

10730 E. Briarwood Avenue  
Centennial, CO 80112  
USA  
Phone: 303.730.1950  
Toll Free: 1.888.506.6887  
Fax: 303.730.1966  
nb-customerservice@bio-techne.com

### **Bio-Techne Canada**

21 Canmotor Ave  
Toronto, ON M8Z 4E6  
Canada  
Phone: 905.827.6400  
Toll Free: 855.668.8722  
Fax: 905.827.6402  
canada.inquires@bio-techne.com

### **Bio-Techne Ltd**

19 Barton Lane  
Abingdon Science Park  
Abingdon, OX14 3NB, United Kingdom  
Phone: (44) (0) 1235 529449  
Free Phone: 0800 37 34 15  
Fax: (44) (0) 1235 533420  
info.EMEA@bio-techne.com

### **General Contact Information**

[www.novusbio.com](http://www.novusbio.com)  
Technical Support: nb-technical@bio-techne.com  
Orders: nb-customerservice@bio-techne.com  
General: novus@novusbio.com

### **Products Related to NBP3-09001-0.2mg**

HAF007	Goat anti-Mouse IgG Secondary Antibody [HRP]
NB720-B	Rabbit anti-Mouse IgG (H+L) Secondary Antibody [Biotin]
NBP1-43319-0.5mg	Mouse IgG1 Kappa Isotype Control (P3.6.2.8.1)
NBP2-55553PEP	Rhodopsin Recombinant Protein Antigen

### **Limitations**

This product is for research use only and is not approved for use in humans or in clinical diagnosis. Primary Antibodies are guaranteed for 1 year from date of receipt.

For more information on our 100% guarantee, please visit [www.novusbio.com/guarantee](http://www.novusbio.com/guarantee)

Earn gift cards/discounts by submitting a review: [www.novusbio.com/reviews/submit/NBP3-09001](http://www.novusbio.com/reviews/submit/NBP3-09001)

Earn gift cards/discounts by submitting a publication using this product:  
[www.novusbio.com/publications](http://www.novusbio.com/publications)

