

# Product Datasheet

## Cytokeratin 5/6 Antibody (KRT5.6/4866) - Azide and BSA Free NBP3-08683

Unit Size: 100 ug

Store at -20 to -80C. Avoid freeze-thaw cycles.

[www.novusbio.com](http://www.novusbio.com)



[technical@novusbio.com](mailto:technical@novusbio.com)

Protocols, Publications, Related Products, Reviews, Research Tools and Images at:  
[www.novusbio.com/NBP3-08683](http://www.novusbio.com/NBP3-08683)

Updated 7/16/2024 v.20.1

Earn rewards for product reviews and publications.

Submit a publication at [www.novusbio.com/publications](http://www.novusbio.com/publications)

Submit a review at [www.novusbio.com/reviews/destination/NBP3-08683](http://www.novusbio.com/reviews/destination/NBP3-08683)



**NBP3-08683**

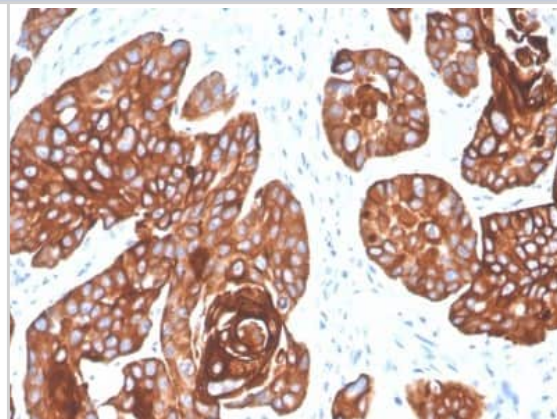
Cytokeratin 5/6 Antibody (KRT5.6/4866) - Azide and BSA Free

| Product Information         |   |
|-----------------------------|---|
| Unit Size                   | 100 ug  |
| Concentration               | 1 mg/ml   |
| Storage                     | Store at -20 to -80C. Avoid freeze-thaw cycles.   |
| Clonality                   | Monoclonal  |
| Clone                       | KRT5.6/4866   |
| Preservative                | No Preservative   |
| Isotype                     | IgG1 Kappa/IgG2a Kappa  |
| Purity                      | Protein A or G purified   |
| Buffer                      | 10 mM PBS   |
| Product Description         |   |
| Description                 | <p>1.0 mg/ml of antibody purified from Bioreactor Concentrate by Protein A/G. Prepared in 10mM PBS WITHOUT BSA &amp; azide. Also available at 200 ug/ml WITH BSA &amp; azide (NBP3-07646).</p> <p>Antibody with azide - store at 2 to 8C. Antibody without azide - store at -20 to -80 C.</p>   |
| Host                        | Mouse   |
| Gene ID                     | 3852  |
| Gene Symbol                 | KRT5  |
| Species                     | Human   |
| Marker                      | Basal, Myoepithelial & Mesothelial Cell Marker  |
| Specificity/Sensitivity     | It recognizes polypeptides of 58kDa and 56kDa, identified as cytokeratin 5 and 6 respectively. It shows no reaction with keratin 1, 8, or 19. It stains the basal cells of squamous and glandular epithelia, part of stratum spinosum of squamous epithelium, myoepithelium, and mesothelium. It does not stain adenous epithelium. Therefore, this antibody can be used to distinguish squamous carcinoma from adenocarcinoma, and to differentiate epithelioid mesothelioma from non-epithelioid mesothelioma and adenocarcinoma. It is also a useful antibody in the identification of mesothelioma and lung squamous cell carcinoma. It does not react with pulmonary adenocarcinoma. |
| Immunogen                   | Recombinant full-length human Cytokeratin 5/6 protein   |
| Product Application Details |   |
| Applications                | Immunohistochemistry-Paraffin   |
| Recommended Dilutions       | Immunohistochemistry-Paraffin 1-2 ug/ml   |
| Application Notes           | Immunohistochemistry Formalin-fixed: 1-2ug/ml for 30 minutes at RT. Staining of formalin-fixed tissues requires heating tissue sections in 10mM Tris with 1mM EDTA, pH 9.0, for 45 min at 95C followed by cooling at RT for 20 minutes. Optimal dilution for a specific application should be determined.   |

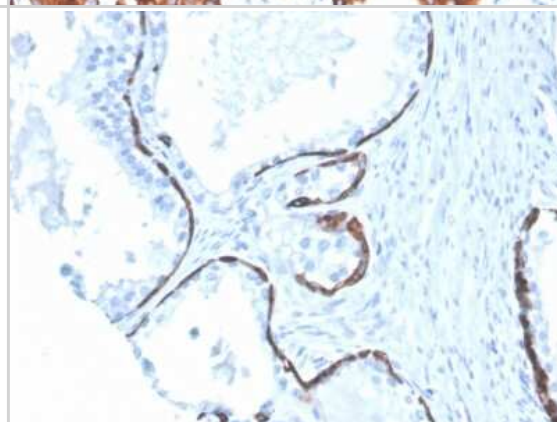


## Images

Immunohistochemistry-Paraffin: Cytokeratin 5/6 Antibody (KRT5.6/4866)  
- Azide and BSA Free [NBP3-08683] - Formalin-fixed, paraffin-  
embedded human squamous cell carcinoma stained with Cytokeratin 5/6  
Mouse Monoclonal Antibody (KRT5.6/4866).



Immunohistochemistry-Paraffin: Cytokeratin 5/6 Antibody (KRT5.6/4866)  
- Azide and BSA Free [NBP3-08683] - Formalin-fixed, paraffin-  
embedded human prostate stained with Cytokeratin 5/6 Mouse  
Monoclonal Antibody (KRT5.6/4866).





### **Novus Biologicals USA**

10730 E. Briarwood Avenue  
Centennial, CO 80112  
USA  
Phone: 303.730.1950  
Toll Free: 1.888.506.6887  
Fax: 303.730.1966  
nb-customerservice@bio-techne.com

### **Bio-Techne Canada**

21 Canmotor Ave  
Toronto, ON M8Z 4E6  
Canada  
Phone: 905.827.6400  
Toll Free: 855.668.8722  
Fax: 905.827.6402  
canada.inquires@bio-techne.com

### **Bio-Techne Ltd**

19 Barton Lane  
Abingdon Science Park  
Abingdon, OX14 3NB, United Kingdom  
Phone: (44) (0) 1235 529449  
Free Phone: 0800 37 34 15  
Fax: (44) (0) 1235 533420  
info.EMEA@bio-techne.com

### **General Contact Information**

www.novusbio.com  
Technical Support: nb-technical@bio-techne.com  
Orders: nb-customerservice@bio-techne.com  
General: novus@novusbio.com

### **Products Related to NBP3-08683**

---

|             |   |
|-------------|---|
| HAF007      | Goat anti-Mouse IgG Secondary Antibody [HRP]            |
| NB720-B     | Rabbit anti-Mouse IgG (H+L) Secondary Antibody [Biotin] |
| 1129-ER-050 | ErbB2/Her2 [Unconjugated]                               |
| NB100-309   | ATM Antibody (2C1)                                      |

---

### **Limitations**

This product is for research use only and is not approved for use in humans or in clinical diagnosis. Primary Antibodies are guaranteed for 1 year from date of receipt.

For more information on our 100% guarantee, please visit [www.novusbio.com/guarantee](http://www.novusbio.com/guarantee)

Earn gift cards/discounts by submitting a review: [www.novusbio.com/reviews/submit/NBP3-08683](http://www.novusbio.com/reviews/submit/NBP3-08683)

Earn gift cards/discounts by submitting a publication using this product:  
[www.novusbio.com/publications](http://www.novusbio.com/publications)

