

Product Datasheet

Cytokeratin 5/6 Antibody (KRT5.6/2438) - Azide and BSA Free NBP3-08622

Unit Size: 100 ug

Store at -20 to -80C. Avoid freeze-thaw cycles.

www.novusbio.com



technical@novusbio.com

Protocols, Publications, Related Products, Reviews, Research Tools and Images at:
www.novusbio.com/NBP3-08622

Updated 1/13/2025 v.20.1

Earn rewards for product reviews and publications.

Submit a publication at www.novusbio.com/publications

Submit a review at www.novusbio.com/reviews/destination/NBP3-08622



NBP3-08622

Cytokeratin 5/6 Antibody (KRT5.6/2438) - Azide and BSA Free

Product Information	
Unit Size	100 ug
Concentration	1 mg/ml
Storage	Store at -20 to -80C. Avoid freeze-thaw cycles.
Clonality	Monoclonal
Clone	KRT5.6/2438
Preservative	No Preservative
Isotype	IgG1 Kappa
Purity	Protein A or G purified
Buffer	10 mM PBS

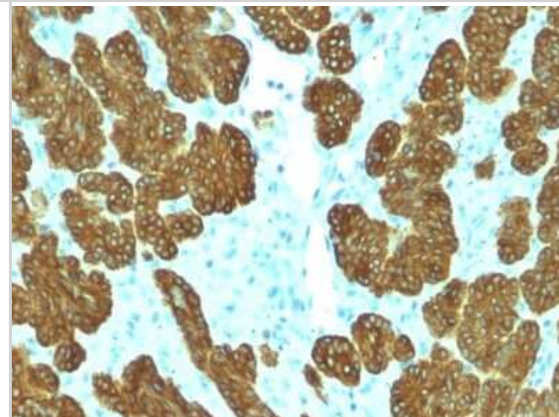
Product Description	
Description	1.0 mg/ml of antibody purified from Bioreactor Concentrate by Protein A/G. Prepared in 10mM PBS WITHOUT BSA & azide. Also available at 200 ug/ml WITH BSA & azide (NBP3-07628). Antibody with azide - store at 2 to 8C. Antibody without azide - store at -20 to -80C.
Host	Mouse
Gene ID	3852
Gene Symbol	KRT5
Species	Human
Marker	Basal, Myoepithelial & Mesothelial Cell Marker
Specificity/Sensitivity	It recognizes polypeptides of 58kDa and 56kDa, identified as cytokeratin 5 and 6 respectively. It shows no reaction with keratin 1, 8, or 19. It stains the basal cells of squamous and glandular epithelia, part of stratum spinosum of squamous epithelium, myoepithelium, and mesothelium. It does not stain adenous epithelium. Therefore, this antibody can be used to distinguish squamous carcinoma from adenocarcinoma, and to differentiate epithelioid mesothelioma from non-epithelioid mesothelioma and adenocarcinoma. It is also a useful antibody in the identification of mesothelioma and lung squamous cell carcinoma.
Immunogen	Recombinant full-length human Cytokeratin 5/6 protein

Product Application Details	
Applications	Immunohistochemistry-Paraffin, Protein Array
Recommended Dilutions	Immunohistochemistry-Paraffin 1-2 ug/ml, Protein Array
Application Notes	Immunohistochemistry Formalin-fixed: 1-2ug/ml for 30 minutes at RT. Staining of formalin-fixed tissues requires boiling tissue sections in 10mM Tris with 1mM EDTA, pH 9.0, for 45 min at 95C followed by cooling at RT for 20 minutes. Optimal dilution for a specific application should be determined.

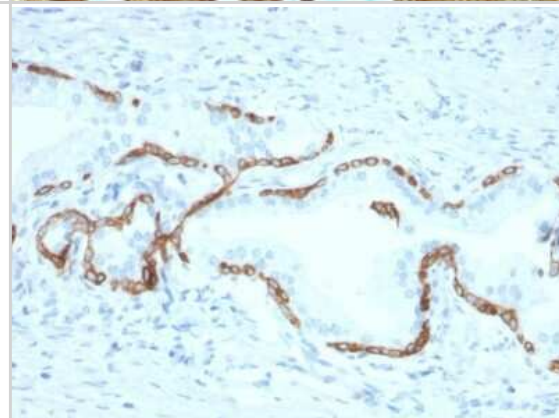


Images

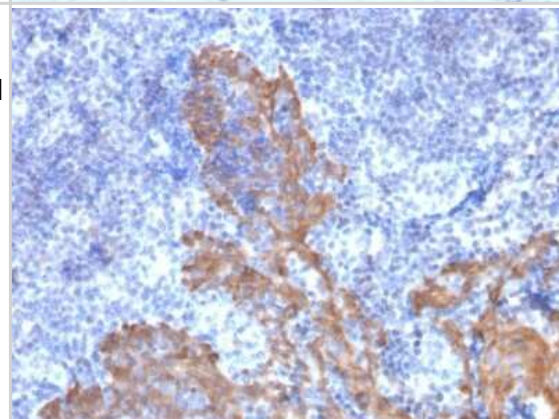
Immunohistochemistry-Paraffin: Cytokeratin 5/6 Antibody (KRT5.6/2438) - Azide and BSA Free [NBP3-08622] - Formalin-fixed, paraffin-embedded human Basal Cell Carcinoma stained with Cytokeratin 5/6 Mouse Monoclonal Antibody (KRT5.6/2438).



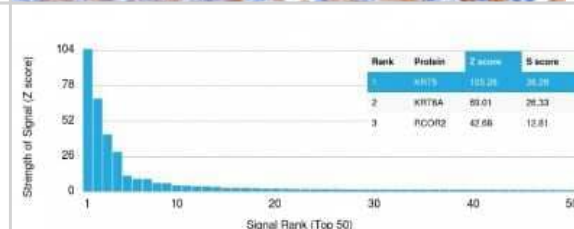
Immunohistochemistry-Paraffin: Cytokeratin 5/6 Antibody (KRT5.6/2438) - Azide and BSA Free [NBP3-08622] - Formalin-fixed, paraffin-embedded human Prostate Carcinoma stained with Cytokeratin 5/6 Mouse Monoclonal Antibody (KRT5.6/2438).



Immunohistochemistry-Paraffin: Cytokeratin 5/6 Antibody (KRT5.6/2438) - Azide and BSA Free [NBP3-08622] - Formalin-fixed, paraffin-embedded human Tonsil stained with Cytokeratin 5/6 Mouse Monoclonal Antibody (KRT5.6/2438).



Protein Array: Cytokeratin 5/6 Antibody (KRT5.6/2438) - Azide and BSA Free [NBP3-08622] - Analysis of Protein Array containing more than 19,000 full-length human proteins using Cytokeratin 5/6 Mouse Monoclonal Antibody (KRT5.6/2438).





Novus Biologicals USA

10730 E. Briarwood Avenue
Centennial, CO 80112
USA
Phone: 303.730.1950
Toll Free: 1.888.506.6887
Fax: 303.730.1966
nb-customerservice@bio-techne.com

Bio-Techne Canada

21 Canmotor Ave
Toronto, ON M8Z 4E6
Canada
Phone: 905.827.6400
Toll Free: 855.668.8722
Fax: 905.827.6402
canada.inquires@bio-techne.com

Bio-Techne Ltd

19 Barton Lane
Abingdon Science Park
Abingdon, OX14 3NB, United Kingdom
Phone: (44) (0) 1235 529449
Free Phone: 0800 37 34 15
Fax: (44) (0) 1235 533420
info.EMEA@bio-techne.com

General Contact Information

www.novusbio.com
Technical Support: nb-technical@bio-techne.com
Orders: nb-customerservice@bio-techne.com
General: novus@novusbio.com

Limitations

This product is for research use only and is not approved for use in humans or in clinical diagnosis. Primary Antibodies are guaranteed for 1 year from date of receipt.

For more information on our 100% guarantee, please visit www.novusbio.com/guarantee

Earn gift cards/discounts by submitting a review: www.novusbio.com/reviews/submit/NBP3-08622

Earn gift cards/discounts by submitting a publication using this product:
www.novusbio.com/publications

