

Product Datasheet

Myelin PLP Antibody (PLP1/4259) [Janelia Fluor® 635] NBP3-08534JF635

Unit Size: 0.1 ml

Store at 4C in the dark.

www.novusbio.com



technical@novusbio.com

Protocols, Publications, Related Products, Reviews, Research Tools and Images at:
www.novusbio.com/NBP3-08534JF635

Updated 12/12/2024 v.20.1

Earn rewards for product
reviews and publications.

Submit a publication at www.novusbio.com/publications

Submit a review at www.novusbio.com/reviews/destination/NBP3-08534JF635



NBP3-08534JF635

Myelin PLP Antibody (PLP1/4259) [Janelia Fluor® 635]

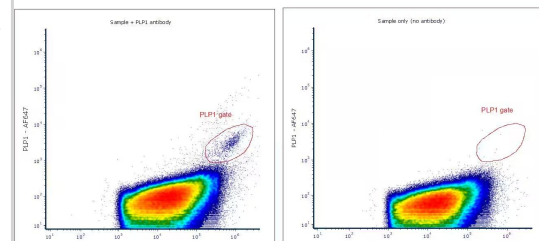
Product Information	
Unit Size	0.1 ml
Concentration	Please see the vial label for concentration. If unlisted please contact technical services.
Storage	Store at 4C in the dark.
Clonality	Monoclonal
Clone	PLP1/4259
Preservative	0.05% Sodium Azide
Isotype	IgG2a
Conjugate	Janelia Fluor 635
Purity	Protein A or G purified
Buffer	50mM Sodium Borate

Product Description	
Host	Mouse
Gene ID	5354
Gene Symbol	PLP1
Species	Human, Mouse, Rat, Bovine, Reptile
Reactivity Notes	Tenerife Lizard
Immunogen	Synthetic peptide GRGTKF that recognizes the C terminal region (aa272-277) of Myelin PLP protein. (Uniprot: P60201)
Notes	Sold under license from the Howard Hughes Medical Institute, Janelia Research Campus.

Product Application Details	
Applications	Flow Cytometry, Immunohistochemistry-Paraffin
Recommended Dilutions	Flow Cytometry Validated for Flow Cytometry from a verified customer review., Immunohistochemistry-Paraffin
Application Notes	Optimal dilution of this antibody should be experimentally determined.

Images

Flow Cytometry: Myelin PLP Antibody (PLP1/4259) [Janelia Fluor® 635] [NBP3-08534JF635] - Total extracellular vesicles with Myelin PLP Antibody (PLP1/4259) [Alexa Fluor® 647] (Catalog # NBP3-08534AF647) (left). Gate determined vesicles positive for PLP1 antibody ranging from 500-800nm size. Image on the right represents the same sample without antibody. 10ul of pre-isolated extracellular vesicles were incubated with 2ul of Myelin PLP Antibody (PLP1/4259) [Alexa Fluor® 647] , during 20 minutes at room temperature, and analyzed in nanoscale flow cytometer able to resolve particles scattering as little as 100um. Image from a verified customer review.





Novus Biologicals USA

10730 E. Briarwood Avenue
Centennial, CO 80112
USA
Phone: 303.730.1950
Toll Free: 1.888.506.6887
Fax: 303.730.1966
nb-customerservice@bio-techne.com

Bio-Techne Canada

21 Canmotor Ave
Toronto, ON M8Z 4E6
Canada
Phone: 905.827.6400
Toll Free: 855.668.8722
Fax: 905.827.6402
canada.inquires@bio-techne.com

Bio-Techne Ltd

19 Barton Lane
Abingdon Science Park
Abingdon, OX14 3NB, United Kingdom
Phone: (44) (0) 1235 529449
Free Phone: 0800 37 34 15
Fax: (44) (0) 1235 533420
info.EMEA@bio-techne.com

General Contact Information

www.novusbio.com
Technical Support: nb-technical@bio-
techne.com
Orders: nb-customerservice@bio-techne.com
General: novus@novusbio.com

Limitations

This product is for research use only and is not approved for use in humans or in clinical diagnosis.
Primary Antibodies are guaranteed for 1 year from date of receipt.

For more information on our 100% guarantee, please visit www.novusbio.com/guarantee

Earn gift cards/discounts by submitting a review: www.novusbio.com/reviews/submit/NBP3-08534JF635

Earn gift cards/discounts by submitting a publication using this product:
www.novusbio.com/publications

