

# Product Datasheet

## PKC beta 2 Antibody (N11-S)

### NBP3-08202

Unit Size: 50 ul

Store at -20C. Avoid freeze-thaw cycles.

[www.novusbio.com](http://www.novusbio.com)



[technical@novusbio.com](mailto:technical@novusbio.com)

Protocols, Publications, Related Products, Reviews, Research Tools and Images at:  
[www.novusbio.com/NBP3-08202](http://www.novusbio.com/NBP3-08202)

Updated 11/12/2023 v.20.1

Earn rewards for product  
reviews and publications.

Submit a publication at [www.novusbio.com/publications](http://www.novusbio.com/publications)

Submit a review at [www.novusbio.com/reviews/destination/NBP3-08202](http://www.novusbio.com/reviews/destination/NBP3-08202)



**NBP3-08202**

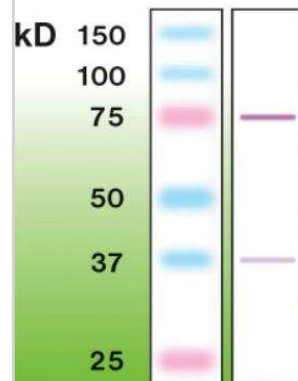
PKC beta 2 Antibody (N11-S)

Product Information	
Unit Size	50 ul
Concentration	Please see the vial label for concentration. If unlisted please contact technical services.
Storage	Store at -20C. Avoid freeze-thaw cycles.
Clonality	Monoclonal
Clone	N11-S
Preservative	0.05% Sodium Azide
Isotype	IgG
Purity	Immunogen affinity purified
Buffer	20 mM Tris-HCl, pH 8.0, 10 mg/ml BSA
Product Description	
Description	This antibody is immunoaffinity purified with immunogenic peptide as a ligand.
Host	Rabbit
Gene ID	5579
Gene Symbol	PRKCB
Species	Human, Mouse, Rat
Immunogen	Peptide derived from C-terminal sequence of human PKC beta 2. Antibody recognizes the epitope located between Asn663 - Lys 672.
Notes	This antibody is immunoaffinity purified with immunogenic peptide as a ligand.
Product Application Details	
Applications	Western Blot, ELISA, Immunocytochemistry/ Immunofluorescence, Immunoprecipitation
Recommended Dilutions	Western Blot 1:10000, ELISA 1:20000-1:100000, Immunocytochemistry/ Immunofluorescence, Immunoprecipitation

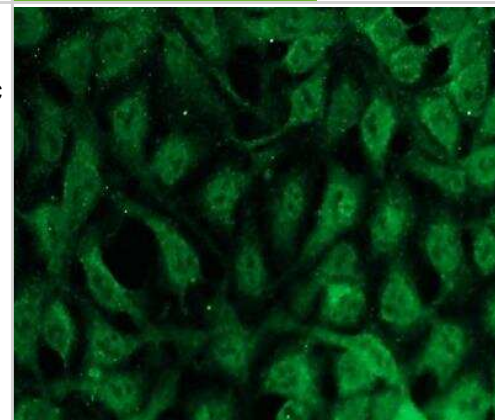


## Images

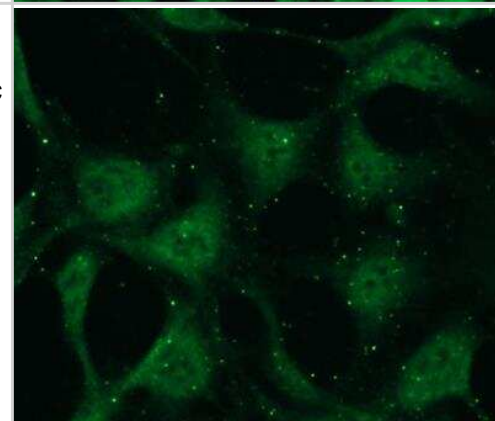
Western Blot: PKC beta 2 Antibody (N11-S) [NBP3-08202] - Western blot of PKC beta 2 in mouse brain crude lysate (50ug of protein loaded).



Immunocytochemistry/Immunofluorescence: PKC beta 2 Antibody (N11-S) [NBP3-08202] - Representative pictures of PKC beta 2 expression in HEK293 cells, visualized with clonal rabbit anti-PKC beta 2 monospecific antibody. Primary antibody dilution - 1:200.



Immunocytochemistry/Immunofluorescence: PKC beta 2 Antibody (N11-S) [NBP3-08202] - Representative pictures of PKC beta 2 expression in HEK293 cells, visualized with clonal rabbit anti-PKC beta 2 monospecific antibody. Primary antibody dilution - 1:200.





### **Novus Biologicals USA**

10730 E. Briarwood Avenue  
Centennial, CO 80112  
USA  
Phone: 303.730.1950  
Toll Free: 1.888.506.6887  
Fax: 303.730.1966  
nb-customerservice@bio-techne.com

### **Bio-Techne Canada**

21 Canmotor Ave  
Toronto, ON M8Z 4E6  
Canada  
Phone: 905.827.6400  
Toll Free: 855.668.8722  
Fax: 905.827.6402  
canada.inquires@bio-techne.com

### **Bio-Techne Ltd**

19 Barton Lane  
Abingdon Science Park  
Abingdon, OX14 3NB, United Kingdom  
Phone: (44) (0) 1235 529449  
Free Phone: 0800 37 34 15  
Fax: (44) (0) 1235 533420  
info.EMEA@bio-techne.com

### **General Contact Information**

www.novusbio.com  
Technical Support: nb-technical@bio-  
techne.com  
Orders: nb-customerservice@bio-techne.com  
General: novus@novusbio.com

### **Products Related to NBP3-08202**

---

HAF008	Goat anti-Rabbit IgG Secondary Antibody [HRP]
NB7160	Goat anti-Rabbit IgG (H+L) Secondary Antibody [HRP]
NBP2-24891	Rabbit IgG Isotype Control
210-TA-005	TNF-alpha [Unconjugated]

---

### **Limitations**

This product is for research use only and is not approved for use in humans or in clinical diagnosis. Primary Antibodies are guaranteed for 1 year from date of receipt.

For more information on our 100% guarantee, please visit [www.novusbio.com/guarantee](http://www.novusbio.com/guarantee)

Earn gift cards/discounts by submitting a review: [www.novusbio.com/reviews/submit/NBP3-08202](http://www.novusbio.com/reviews/submit/NBP3-08202)

Earn gift cards/discounts by submitting a publication using this product:  
[www.novusbio.com/publications](http://www.novusbio.com/publications)

