

Product Datasheet

Cyclin A1 Antibody (XLA1-3)

NBP3-07743-100ug

Unit Size: 100 ug

Store at 4C.

www.novusbio.com



technical@novusbio.com

Protocols, Publications, Related Products, Reviews, Research Tools and Images at:
www.novusbio.com/NBP3-07743

Updated 7/16/2024 v.20.1

Earn rewards for product reviews and publications.

Submit a publication at www.novusbio.com/publications

Submit a review at www.novusbio.com/reviews/destination/NBP3-07743



NBP3-07743-100ug

Cyclin A1 Antibody (XLA1-3)

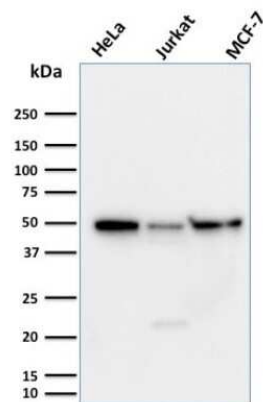
Product Information	
Unit Size	100 ug
Concentration	0.2 mg/ml
Storage	Store at 4C.
Clonality	Monoclonal
Clone	XLA1-3
Preservative	0.05% Sodium Azide
Isotype	IgG1 Kappa
Purity	Protein A or G purified
Buffer	10 mM PBS with 0.05% BSA
Target Molecular Weight	65 kDa

Product Description	
Description	200ug/ml of antibody purified from Bioreactor Concentrate by Protein A or G. Prepared in 10 mM PBS with 0.05% BSA & 0.05% azide. Also available WITHOUT BSA & azide at 1.0 mg/ml. (NBP3-08766) Antibody with azide - store at 2 to 8C. Antibody without azide - store at -20 to -80C.
Host	Mouse
Gene ID	8900
Gene Symbol	CCNA1
Species	Xenopus
Specificity/Sensitivity	The critical role that the family of regulatory proteins known as cyclins play in eukaryotic cell cycle regulation is well established. The best-characterized cyclin complex is the mitotic cyclin B/Cdc2 p34 kinase, the active component of maturing promoting factor. Cyclin A accumulates prior to cyclin B in the cell cycle, appears to be involved in control of S phase and has been shown to associate with cyclin-dependent kinase-2 (Cdk2). In addition, cyclin A has been implicated in cell transformation and is found in complexes with E1A, transcription factors DRTF1 and E2F, and retinoblastoma protein p110. A second form of cyclin A, named cyclin A1 because of its high sequence homology to Xenopus cyclin A1, is most highly expressed in germ cells. It has been proposed that cyclin A1 can associate with Cdk2, p39 and Cdc2 p34. The antibody detects Xenopus cyclin A in blots. Cyclin A1 is the embryonic cyclin which is present in Xenopus eggs. This monoclonal antibody only detects Xenopus Cyclin A1.
Immunogen	Recombinant full-length Xenopus laevis Cyclin A1 protein (Uniprot: P18606)

Product Application Details	
Applications	Western Blot
Recommended Dilutions	Western Blot 1-2 ug/ml
Application Notes	Optimal dilution for a specific application should be determined.

Images

Western Blot: Cyclin A1 Antibody (XLA1-3) [NBP3-07743] - Western Blot Analysis of (1) HeLa (2) Jurkat and (3) MCF-7 cell lysates using Cyclin A1 Mouse Monoclonal Antibody (XLA1-3).





Novus Biologicals USA

10730 E. Briarwood Avenue
Centennial, CO 80112
USA
Phone: 303.730.1950
Toll Free: 1.888.506.6887
Fax: 303.730.1966
nb-customerservice@bio-techne.com

Bio-Techne Canada

21 Canmotor Ave
Toronto, ON M8Z 4E6
Canada
Phone: 905.827.6400
Toll Free: 855.668.8722
Fax: 905.827.6402
canada.inquires@bio-techne.com

Bio-Techne Ltd

19 Barton Lane
Abingdon Science Park
Abingdon, OX14 3NB, United Kingdom
Phone: (44) (0) 1235 529449
Free Phone: 0800 37 34 15
Fax: (44) (0) 1235 533420
info.EMEA@bio-techne.com

General Contact Information

www.novusbio.com
Technical Support: nb-technical@bio-techne.com
Orders: nb-customerservice@bio-techne.com
General: novus@novusbio.com

Products Related to NBP3-07743-100ug

HAF007	Goat anti-Mouse IgG Secondary Antibody [HRP]
NB720-B	Rabbit anti-Mouse IgG (H+L) Secondary Antibody [Biotin]
NBP1-43319-0.5mg	Mouse IgG1 Kappa Isotype Control (P3.6.2.8.1)
H00008900-P01-10ug	Recombinant Human Cyclin A1 GST (N-Term) Protein

Limitations

This product is for research use only and is not approved for use in humans or in clinical diagnosis. Primary Antibodies are guaranteed for 1 year from date of receipt.

For more information on our 100% guarantee, please visit www.novusbio.com/guarantee

Earn gift cards/discounts by submitting a review: www.novusbio.com/reviews/submit/NBP3-07743

Earn gift cards/discounts by submitting a publication using this product:
www.novusbio.com/publications

