

# Product Datasheet

## HLA DPB1 Antibody (HLA-DPB1/2862R) NBP3-07722-100ug

Unit Size: 100 ug

Store at 4C.

[www.novusbio.com](http://www.novusbio.com)



[technical@novusbio.com](mailto:technical@novusbio.com)

Protocols, Publications, Related Products, Reviews, Research Tools and Images at:  
[www.novusbio.com/NBP3-07722](http://www.novusbio.com/NBP3-07722)

Updated 7/16/2024 v.20.1

Earn rewards for product  
reviews and publications.

Submit a publication at [www.novusbio.com/publications](http://www.novusbio.com/publications)

Submit a review at [www.novusbio.com/reviews/destination/NBP3-07722](http://www.novusbio.com/reviews/destination/NBP3-07722)



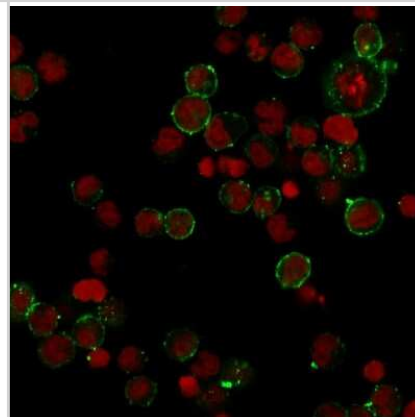
**NBP3-07722-100ug**

HLA DPB1 Antibody (HLA-DPB1/2862R)

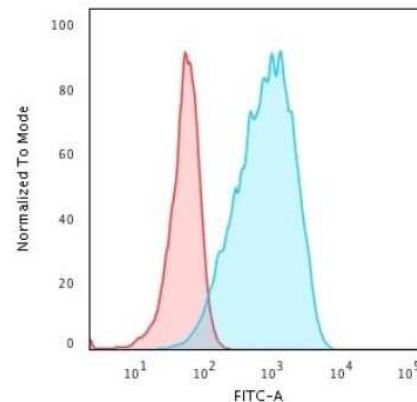
<b>Product Information</b>	
<b>Unit Size</b>	100 ug
<b>Concentration</b>	0.2 mg/ml
<b>Storage</b>	Store at 4C.
<b>Clonality</b>	Monoclonal
<b>Clone</b>	HLA-DPB1/2862R
<b>Preservative</b>	0.05% Sodium Azide
<b>Isotype</b>	IgG
<b>Purity</b>	Protein A or G purified
<b>Buffer</b>	10 mM PBS with 0.05% BSA
<b>Product Description</b>	
<b>Description</b>	200ug/ml of antibody purified from Bioreactor Concentrate by Protein A or G. Prepared in 10 mM PBS with 0.05% BSA & 0.05% azide. Also available WITHOUT BSA & azide at 1.0 mg/ml. (NBP3-08719)  Antibody with azide - store at 2 to 8C. Antibody without azide - store at -20 to -80C.
<b>Host</b>	Rabbit
<b>Gene ID</b>	3115
<b>Gene Symbol</b>	HLA-DPB1
<b>Species</b>	Human
<b>Specificity/Sensitivity</b>	Recognizes a non-polymorphic determinant of DP-MHC class II. MHC class II antigens are transmembrane glycoproteins of non-covalently linked alpha (33-35kDa) and beta (27-30kDa) chains. It reportedly reacts with B- non-T, non-B cell lines but not with T- and myeloid cell lines and leukemias. Differential expression of MHC class II antigens on fetal and adult lymphocytes, malignant B cells appears to reflect the stage of cell differentiation which may be useful in the study of lymphoproliferative disorders.
<b>Immunogen</b>	Non-T, non-B human acute lymphoblastic leukemia REH6 cell line
<b>Product Application Details</b>	
<b>Applications</b>	ELISA, Flow Cytometry, Immunocytochemistry/ Immunofluorescence
<b>Recommended Dilutions</b>	Flow Cytometry 1-2 ug/million cells, ELISA 2-4 ug/ml, Immunocytochemistry/ Immunofluorescence 1-2 ug/ml
<b>Application Notes</b>	ELISA: For coating use Ab at 2-4ug/ml, order Ab without BSA. Optimal dilution for a specific application should be determined.

## Images

Immunocytochemistry/Immunofluorescence: HLA DPB1 Antibody (HLA-DPB1/2862R) [NBP3-07722] - Immunofluorescence Analysis of Human Raji cells labeling HLA DPB1 with HLA DPB1 Rabbit Recombinant Monoclonal (HLA DPB1B1/2862R) followed by Goat anti-rabbit IgG-CF488 (Green). The nuclear counterstain is RedDot (Red).



Flow Cytometry: HLA DPB1 Antibody (HLA-DPB1/2862R) [NBP3-07722] - Flow Cytometric Analysis of Raji cells HLA DPB1 Rabbit Recombinant Monoclonal Antibody (HLA DPB1B1/2862R) followed by goat anti-Rabbit IgG-CF488 (Blue); Isotype Control (Red).





### **Novus Biologicals USA**

10730 E. Briarwood Avenue  
Centennial, CO 80112  
USA  
Phone: 303.730.1950  
Toll Free: 1.888.506.6887  
Fax: 303.730.1966  
nb-customerservice@bio-techne.com

### **Bio-Techne Canada**

21 Canmotor Ave  
Toronto, ON M8Z 4E6  
Canada  
Phone: 905.827.6400  
Toll Free: 855.668.8722  
Fax: 905.827.6402  
canada.inquires@bio-techne.com

### **Bio-Techne Ltd**

19 Barton Lane  
Abingdon Science Park  
Abingdon, OX14 3NB, United Kingdom  
Phone: (44) (0) 1235 529449  
Free Phone: 0800 37 34 15  
Fax: (44) (0) 1235 533420  
info.EMEA@bio-techne.com

### **General Contact Information**

www.novusbio.com  
Technical Support: nb-technical@bio-techne.com  
Orders: nb-customerservice@bio-techne.com  
General: novus@novusbio.com

### **Products Related to NBP3-07722-100ug**

---

HAF008	Goat anti-Rabbit IgG Secondary Antibody [HRP]
NB7160	Goat anti-Rabbit IgG (H+L) Secondary Antibody [HRP]
NBP2-24891	Rabbit IgG Isotype Control
H00003115-P01-10ug	Recombinant Human HLA DPB1 GST (N-Term) Protein

---

### **Limitations**

This product is for research use only and is not approved for use in humans or in clinical diagnosis. Primary Antibodies are guaranteed for 1 year from date of receipt.

For more information on our 100% guarantee, please visit [www.novusbio.com/guarantee](http://www.novusbio.com/guarantee)

Earn gift cards/discounts by submitting a review: [www.novusbio.com/reviews/submit/NBP3-07722](http://www.novusbio.com/reviews/submit/NBP3-07722)

Earn gift cards/discounts by submitting a publication using this product:  
[www.novusbio.com/publications](http://www.novusbio.com/publications)

